



**orientation**

**MONTANA  
STATE UNIVERSITY**

— BOZEMAN · MONTANA —

# Ecology & Earth Sciences

**Alex Reynolds & Aisha Garged  
Academic Advisors**



# College of Letters and Science

CLS Academic Advising Center  
Wilson Hall 1-106

[Alexandra.reynolds1@montana.edu](mailto:Alexandra.reynolds1@montana.edu)  
[Aisha.garged@montana.edu](mailto:Aisha.garged@montana.edu)

406-994-4254



# Advisor Availability Fall 2024

CLS Advising Center

Monday- Friday

8:00am – 5:00pm

- By-appointment schedule via navMSU
- Drop-In hours: TBD

# Academic Advisors

- Our goal is to assist with...
  - Developing your academic goals
  - Understand curriculum, and policies
  - Academic Planning
  - Build connections with Student Support Resources
    - Clubs, Tutoring, Faculty, Department Opportunities



# Student's role in Advising

---

- Actively participate in advising every semester
- Proactively monitor your academic record in DegreeWorks
- Utilize resources: ask for help, attend instructor office hours, meet with tutors
- Learn and Understand Curriculum Requirements
  - Minimum grade requirements
  - Credits to earn your degree
- Adhere to MSU policies and deadlines
- ASK QUESTIONS!

# Fall 2024 Classes – Online Tools

---

- MyInfo
  - Literally where all your IMPORTANT information lives!!
- DegreeWorks (MyInfo > Student Services )
  - Your Degree Auditing Software
- CatCourse (MyInfo > Student Services > Registration)
  - Course Registration Software
  
- Where do you find your **confirmed final** schedule?
  - "Student Schedule by Day and Time" (MyInfo > Student Services > Registration)

Back to MyInfo Help & FAQ Print Exit

Find Student ID Name Degree Major Level Classification Attribute Last Audit Last Refresh

-02479117 Bobcat, Champ The BS Civil Engineering UG Freshman 07/13/2023 07/13/2023 at 10:52 pm

Worksheets Plans Notes GPA Calc

Worksheets What If Look Ahead

Format: Student View View Save as PDF Process New Include in-progress classes Include preregistered classes Classes by Term

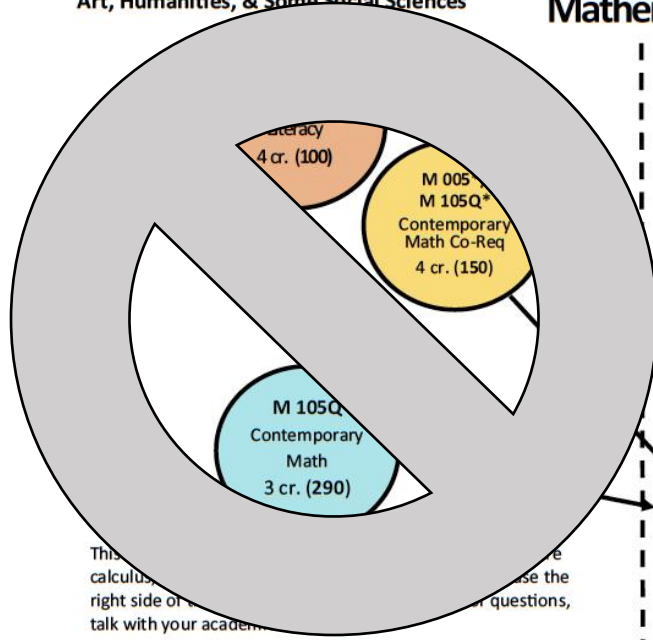
- Legend
- Complete
  - Complete except for classes in-progress
  - Nearly complete - see advisor
  - Not Complete
  - Prerequisite Required
  - Any course number

Montana State University Bozeman

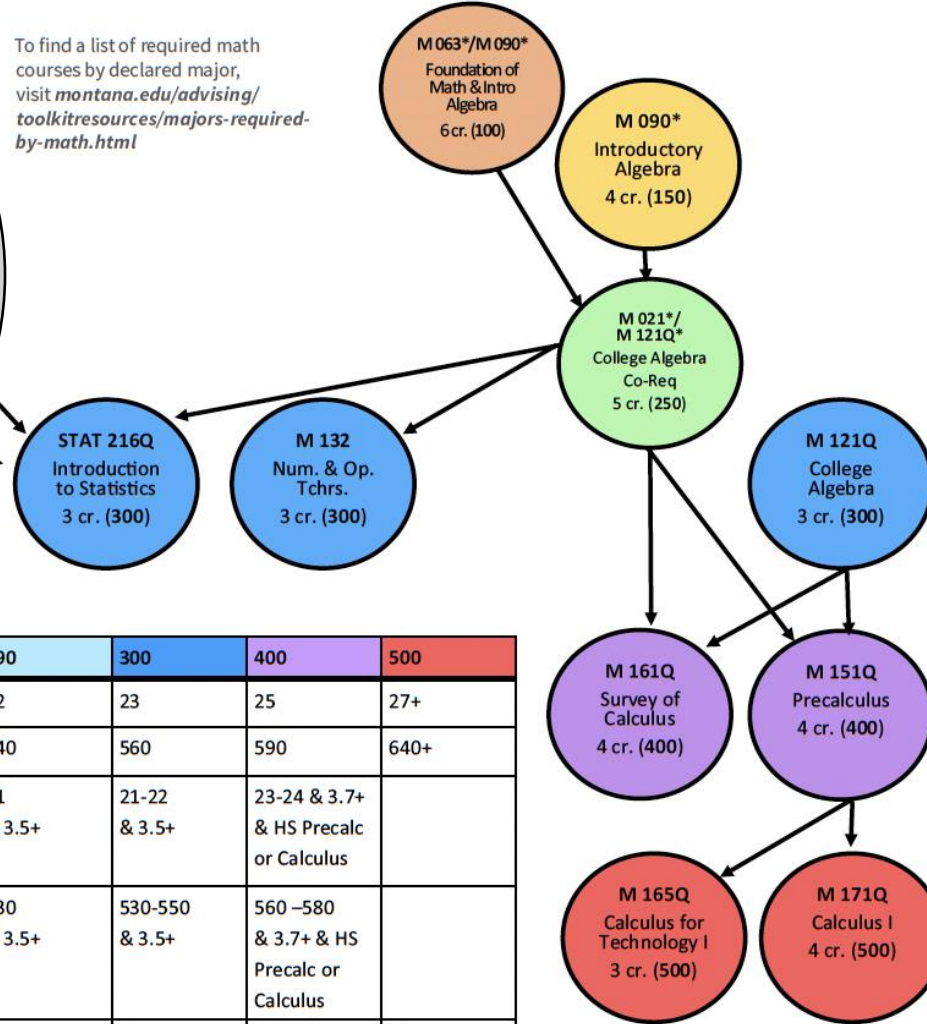
Student View AD647VPK as of 07/13/2023 at 12:33

Student	Bobcat, Champ The	Level	Undergraduate - Semester
Confidential Record		Degree	Bachelor of Science
ID	-02479117	College	College of Engineering
Classification	Freshman	Major	Civil Engineering
Advisor	Campeau, Antoni A	Minor	
Overall GPA	0.00	More Info	Placement Data
Registration Hold		Academic Standing	
Registration PIN/Date		Student Phone	(406) 3709709
Graduation Application Status			

<input checked="" type="checkbox"/> Degree in Bachelor of Science	Catalog Year: 2022-2023		
Unmet conditions for this set of requirements: A minimum of 30 credits must be taken through MSU-Bozeman, you currently have 1 but need 29 more. 23 of the last 30 credits must be taken through MSU-Bozeman.			
<input type="checkbox"/> 128 Credits required	Still Needed: 128 credits are required. You have 4 credits in-progress or completed. You must successfully complete these and at least 124 more credits.		
<input type="checkbox"/> 42 Upper-Division Credits Required	Still Needed: 42 credits of upper-division courses are required. You have 0 credits in-progress or completed You must successfully complete these and at least 42 more upper-division credits.		
Your Upper Division Credits and/or Total Credits requirement may not be satisfied, even with a Green Checkbox. They display assuming successful completion of your in progress coursework. You can uncheck 'Include in-progress classes' and 'Include preregistered classes' for an accurate representation of your current status. Additionally, if you are repeating a course you should contact the Office of the Registrar to verify your total credits.			
<input type="checkbox"/> You have no MSU credits for GPA calculation			
<input type="checkbox"/> CORE 2.0	Still Needed: See CORE 2.0 section		
<input type="checkbox"/> Major Requirements	Still Needed: See Major in Civil Engineering section		
<input checked="" type="checkbox"/> CORE 2.0	Catalog Year: 2022-2023		
Check your Major Block for requirements that also fulfill CORE 2.0 requirements			
<input type="checkbox"/> University Seminar (US)	Still Needed: 1 Class in @ @ with Attribute US		
<input type="checkbox"/> College Writing (W)	Still Needed: 1 Class in @ @ with Attribute W		
<input checked="" type="checkbox"/> Quantitative Reasoning (Q)	MATH 121Q	Algebra I	TA 3 2016 Summer
Satisfied by MATH101 - Algebra I - West High School Tech Prep			
<input type="checkbox"/> Diversity (D)	Still Needed: 1 Class in @ @ with Attribute D		
<input type="checkbox"/> Contemp Issues & Inquirv Nat Sci or Permitted Subs	Still Needed: Choose from 1 of the following:		



To find a list of required math courses by declared major, visit [montana.edu/advising/toolkitresources/majors-required-by-math.html](http://montana.edu/advising/toolkitresources/majors-required-by-math.html)



This is a general guide. For more information on the right side of the flowchart, please use the questions, talk with your academic advisor.

### What is my starting level?

	100	150	250	290	300	400	500
ACT alone	Below 17	17	21	22	23	25	27+
SAT alone	Below 460	460	530	540	560	590	640+
ACT and HS GPA		15-16 & 3.0+	20 & 3.5+	21 & 3.5+	21-22 & 3.5+	23-24 & 3.7+ & HS Precalc or Calculus	
SAT and HS GPA		380-450 & 3.0+	520 & 3.5+	530 & 3.5+	530-550 & 3.5+	560-580 & 3.7+ & HS Precalc or Calculus	
MPLEX or EdReady Placement	10	15	25	30	30	40	50

\* Indicates the class is being taught through Gallatin College

Revised: 4/21/2021



# Math Placement Level - Math Course

<b>Level 500</b>	<b>Calculus I</b>	<b>M171Q</b>
<b>Level 450</b>	<b>Calculus I + Trigonometry</b>	<b>M171Q + M170</b>
<b>Level 400</b>	<b>Pre-Calculus</b>	<b>M151Q</b>
<b>Level 300</b>	<b>College Algebra/ Statistics</b>	<b>M121Q/ STATS 216Q</b>

<b>Level 250 or 290</b>	<b>College Algebra +</b>	<b>M121Q +M021</b>
<b>Level 150</b>	<b>Intro to Algebra</b>	<b>M 090</b>
<b>Level 100</b>	<b>Foundation of Math + Intro Algebra</b>	<b>M 063 + M 090</b>

# Earth Science

Geology

Paleontology

Snow Science

Geography

Geographic Information Science (GIS)/Planning



# Department of Earth Sciences

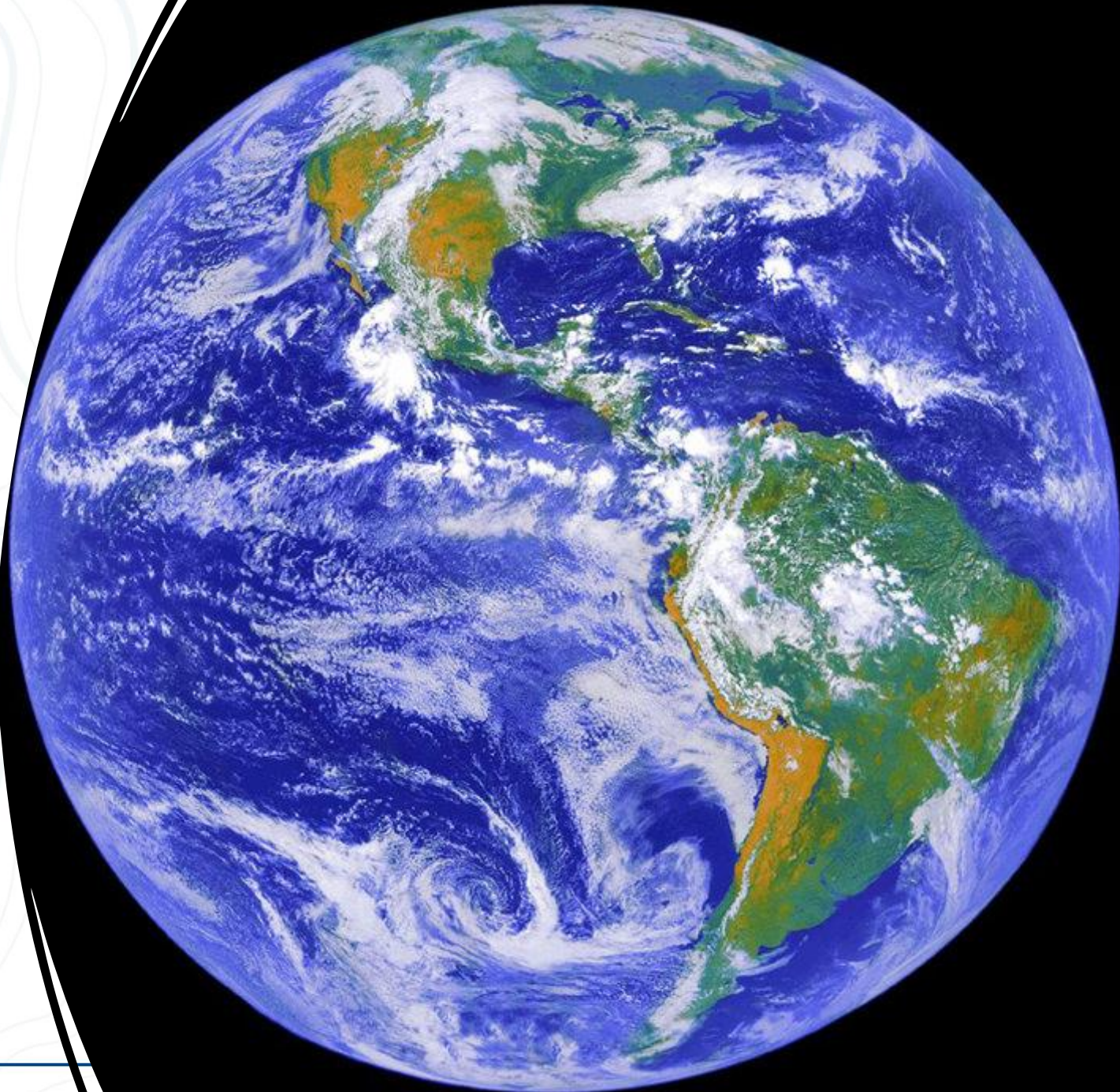
Alex Reynolds- Academic Advisor

Dr. David Varricchio – Department  
Head

Claudia Albrecht – Academic  
Services Coordinator

226 Traphagen, Main Office

406-994-3331



# Info all Earth Science students need to know...

- 120 credits to earn your Bachelor of Science (BS)
  - To maintain 4-year graduation timeline students must successfully complete 15 credits per semester (or 30 credits per academic year)
  - 15 credits per semester may be required for certain scholarships
  - Each semester will include a mix of CORE, Major, Elective and/or pre-requisite courses
  - 12 credits is the minimum for full-time standing, tuition remains the same at 12+ credits
- Many 300-400 level courses are taught once a year or every other year. Therefore, after completing the required 100-200 level courses, students are encouraged to take 300 level beginning their sophomore year. Many 300 level courses are prerequisites for 400 level.



# Math Options For Earth Sciences

## Option 1

- **M 171**
  - PREREQUISITE: M 151Q or Math Level 500
- **M 172**
  - PREREQUISITE: M 171Q
- **STAT 332**
  - PREREQUISITE: [M 172](#)

## Option 2

- **M 161**
  - PREREQUISITE: M 121Q or Math Level 400
- **STAT 216**
  - PREREQUISITE: Math Level 300, or a C- or better in any 100 level or above M course
- **STAT 337**
  - PREREQUISITE: [STAT 216Q](#) or [STAT 332](#)



# Paleontology Option

- Recommendation is to take more Statistic classes for this major

<p><b>Math Level 500 (15 credits)</b>            EARTH 101IN            M 171Q or M 161Q            CHMY 141/142            US CORE or WRIT 101W</p>	<p><b>Math Level 250/290 (16 credits)</b>            EARTH 101IN            BIOB 170IN            M 121Q + M 021 (5 cr)            US CORE or WRIT 101W</p>
<p><b>Math Level 400 (15 credits)</b>            EARTH 101IN            M 151Q or M 161Q            CHMY 141/142            US CORE or WRIT 101W</p>	<p><b>Math Level 150 (15 credits)</b>            EARTH 101IN            BIOB 170IN            M 090            US CORE or WRIT 101W</p>
<p><b>Math Level 300 (15 credits)</b>            EARTH 101IN            M 121Q            BIOB 170IN            US CORE or WRIT 101W</p>	<p><b>Math Level 100 (16 credits)</b>            EARTH 101IN            BIOB 170IN            M 063 + M 090 (5 cr)            US CORE or WRIT 101W</p>

# Snow Science Option

- Students need STAT 216 + STAT 337 (NOT STAT 332), STAT 411 required;
  - M 151 does NOT substitute for M 161

## **Math Level 500 (14 credits)**

ERTH 101IN

M 171Q or M 161Q

GPHY 141D

US CORE or WRIT 101W

## **Math Level 250/290 (15 credits)**

ERTH 101IN

GPHY 141D

M 121Q + M 021 (5 cr)

US CORE or WRIT 101W

## **Math Level 400 (14 credits)**

ERTH 101IN

M 151Q or M 161Q

GPHY 141D

US CORE or WRIT 101W

## **Math Level 150 (14 credits)**

ERTH 101IN

GPHY 141D

M 090

US CORE or WRIT 101W

## **Math Level 300 (14 credits)**

ERTH 101IN

M 121Q

GPHY 141D

US CORE or WRIT 101W

## **Math Level 100 (15 credits)**

ERTH 101IN

GPHY 141D

M 063 + M 090 (5 cr)

US CORE or WRIT 101W

# Geology Option

## **Math Level 500 (15 credits)**

ERTH 101IN  
M 171Q or M 161Q  
CHMY 141/142  
US CORE or WRIT 101W

## **Math Level 250/290 (15 credits)**

ERTH 101IN  
M 121Q + M 021 (5 cr)  
US CORE or WRIT 101W  
CORE: IA, D, IH, IS

## **Math Level 400 (15 credits)**

ERTH 101IN  
M 151Q or M 161Q  
CHMY 141/142  
US CORE or WRIT 101W

## **Math Level 150 (16 credits)**

ERTH 101IN  
M 090  
US CORE or WRIT 101W  
2 CORE Options: IA, D, IH, IS

## **Math Level 300 (16 credits)**

ERTH 101IN  
M 121Q or STAT 216Q  
US CORE or WRIT 101W  
2 CORE Options: IA, D, IH, IS

## **Math Level 100 (15 credits)**

ERTH 101IN  
M 063 + M 090 (5 cr)  
US CORE or WRIT 101W  
CORE: IA, D, IH, IS



# Geography Option

- **Human Geography  
Emphasis**
- **Physical Geography  
Emphasis**

<p><b>Math Level 500 (16 credits)</b>            EARTH 101IN            STAT 216Q            GPHY 141D            US CORE or WRIT 101W            CORE: IA, IH, IS, CS</p>	<p><b>Math Level 250/290 (15 credits)</b>            EARTH 101IN            M 121Q + M 021 (5 cr)            GPHY 141D            US CORE or WRIT 101W</p>
<p><b>Math Level 400 (16 credits)</b>            EARTH 101IN            STAT 216Q            GPHY 141D            US CORE or WRIT 101W            CORE: IA, IH, IS, CS</p>	<p><b>Math Level 150 (14 credits)</b>            EARTH 101IN            M 090            GPHY 141D            US CORE or WRIT 101W</p>
<p><b>Math Level 300 (16 credits)</b>            EARTH 101IN            GPHY 141D            STAT 216Q            US CORE or WRIT 101W            CORE: IA, IH, IS, CS</p>	<p><b>Math Level 100 (15 credits)</b>            EARTH 101IN            M 063 + M 090 (5 cr)            GPHY 141D            US CORE or WRIT 101W</p>

# Geographic Information Science (GIS)/ Planning Option

<p><b>Math Level 500 (16 credits)</b>            EARTH 101IN            STAT 216Q            GPHY 141D            US CORE or WRIT 101W            ECNS 101IS or MART 145RA</p>	<p><b>Math Level 250/290 (15 credits)</b>            EARTH 101IN            M 121Q + M 021 (5 cr)            GPHY 141D            US CORE or WRIT 101W</p>
<p><b>Math Level 400 (16 credits)</b>            EARTH 101IN            M 151Q            GPHY 141D            US CORE or WRIT 101W</p>	<p><b>Math Level 150 (14 credits)</b>            EARTH 101IN            M 090            GPHY 141D            US CORE or WRIT 101W</p>
<p><b>Math Level 300 (16 credits)</b>            EARTH 101IN            GPHY 141D            M 121Q            US CORE or WRIT 101W            ECNS 101IS or MART 145RA</p>	<p><b>Math Level 100 (15 credits)</b>            EARTH 101IN            M 063 + M 090 (5 cr)            GPHY 141D            US CORE or WRIT 101W</p>



# Department of Ecology

- B.S. in Biological Sciences
  - Fish and Wildlife Ecology and Management
  - Conservation Biology and Ecology
  - Organismal Biology
  - Biology – Teaching
  
- Interdisciplinary minor in Water Resources

# Department of Ecology

Aisha Garged- Academic Advisor

Alex Reynolds- Academic Advisor

Dr. Diane Debinski – Department  
Head

Madalyn Eglian – Academic  
Services Coordinator

310 Lewis Hall, Main Office

406-994-4548



*B. Monginoux  
www.Photo-Paysage.com*

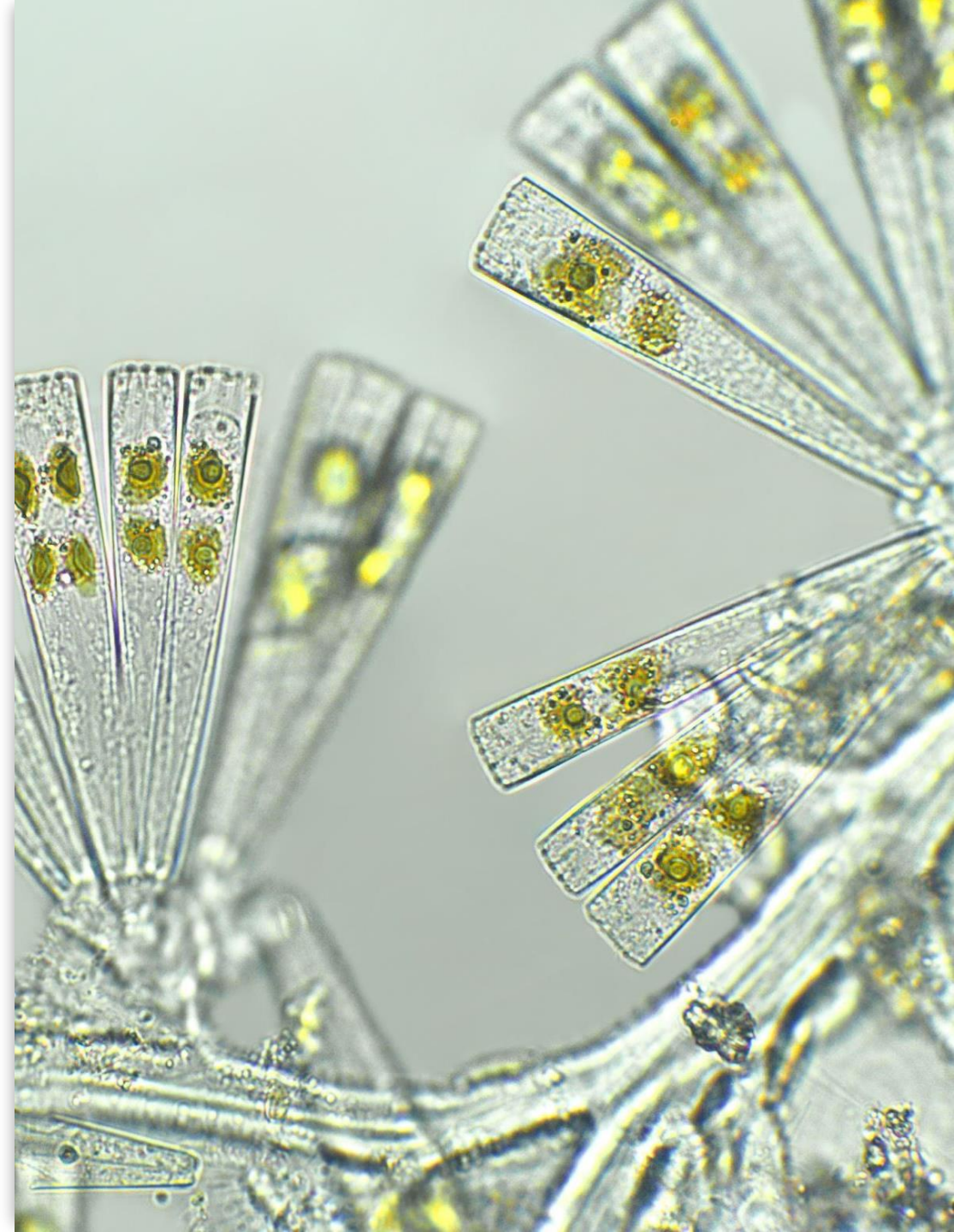
# Info all Ecology students need to know...

---

- 120 credits to earn your Bachelor of Science (BS)
- To maintain 4-year graduation timeline students must successfully complete 15 credits per semester (or 30 credits per academic year)
- 15 credits per semester may be required for certain scholarships
- Each semester will include a mix of CORE, Major, Elective and/or pre-requisite courses
- 12 credits is the minimum for full-time standing, tuition remains the same at 12+ credits

# Overview of Ecology's Concentrations

- Every student in the Ecology department earns a B.S. in Biological Sciences, but chooses one of four concentrations to focus their studies:
  - **Fish and Wildlife Ecology and Management:** This concentration is designed for students who want to enter a career in wildlife biology. It emphasizes the conservation of biota and natural resources with a focus on preparing students for careers as fish and wildlife biologists.
  - **Conservation Biology and Ecology:** This concentration also focuses on the conservation of biota and natural resources, but also includes a broader understanding of the ways natural and human-related process affect biological diversity and the discussion of societal context.
  - **Organismal Biology:** This highly customizable concentration focuses on understanding plant and animal biology from the inner-most workings of the internal biological systems and those organisms' interaction with their ecosystem.
  - **Biology-Teaching:** This concentration provides a solid education in biology and basic sciences with professional preparation courses required for state teacher certification in grades 5-12.



# How to choose your Fall'24 schedule:

---

- Considerations:
  - Courses have been chosen to keep you on track to graduation
  - Transfer credits from high school were considered (AP, Dual Enrollment, IB)
  - Courses from your MAJOR
  - CORE courses



# Ecology & Math Placement

---

- Why is an appropriate math placement important?
  - Answer: Math Placement is your starting line to reach your major requirements
- MAJOR REQUIREMENTS:
  - **M 161Q- Survey of Calculus**
  - **Chemistry**
    - **FWEM: CHMY 121/122** Intro to General Chemistry w/ Lab and Recitation = 300 Math Placement
    - **CBE, Org Bio and Bio T.: CHMY 141/142** College Chemistry 1 w/ Lab = 400 Math Placement



# Fish and Wildlife Ecology & Management



*SCAN ME*

<b>Math Level 500 (15 credits)</b> WILD 201 BIOB 170IN CHMY 121/122 US CORE or WRIT 101W Choose One: BIOE 103CS/ENSC 110/NRSM 101	<b>Math Level 250/290 (16 credits)</b> WILD 201 BIOB 170IN M 121Q + M 021 (5 cr) US CORE or WRIT 101W Choose One: BIOE 103CS/ENSC 110/NRSM 101
<b>Math Level 400 (15 credits)</b> WILD 201 BIOB 170IN CHMY 121/122 US CORE or WRIT 101W Choose One: BIOE 103CS/ENSC 110/NRSM 101	<b>Math Level 150 (15 credits)</b> WILD 201 BIOB 170IN M 090 US CORE or WRIT 101W Choose One: BIOE 103CS/ENSC 110/NRSM 101
<b>Math Level 300 (15 credits)</b> WILD 201 BIOB 170IN CHMY 121/122 US CORE or WRIT 101W Choose One: BIOE 103CS/ENSC 110/NRSM 101	<b>Math Level 100 (16 credits)</b> WILD 201 BIOB 170IN M 063 + M 090 (5 cr) US CORE or WRIT 101W (3 cr) Choose One: BIOE 103CS/ENSC 110/NRSM 101

# Conservation Biology & Ecology

## Math Level 500 (14 credits)

BIOB 170IN  
CHMY 141/142  
CLS 101US or COMX 111US  
BIOE 103CS

## Math Level 250/290 (15 credits)

BIOB 170IN  
BIOE 103CS  
M 121Q + M 021 (5 cr)  
CLS 101US or COMX 111US

## Math Level 400 (16 credits)

BIOB 170IN  
BIOE 103CS  
CHMY 141/142  
CLS 101US or COMX 111US  
Choose One CORE: IA, IH, IS, D,  
W

## Math Level 150 (14 credits)

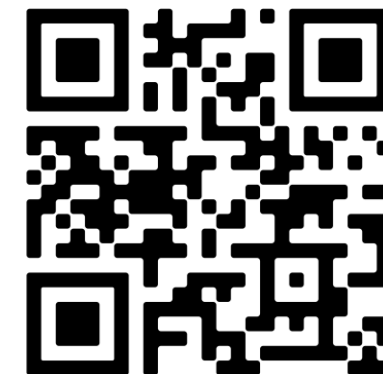
BIOB 170IN  
BIOE 103CS  
M 090  
CLS 101US or COMX 111US

## Math Level 300 (16 credits)

BIOB 170IN  
M121Q  
BIOE 103CS  
CLS 101US or COMX 111US  
Choose One CORE: IA, IH, IS, D,  
W

## Math Level 100 (15 credits)

BIOB 170IN  
BIOE 103CS  
M 063 + M 090 (5 cr.)  
CLS 101US or COMX 111US



# Organismal Biology



SCAN ME

## Math Level 500 (14 credits)

BIOB 170IN

CHMY 141/142

STAT216Q

CLS 101US or COMX 111US

Choose One CORE: IA, IH, IS, D, W

## Math Level 250/290 (15 credits)

BIOB 170IN

M 121Q + M 021 (5 cr)

CLS 101US or COMX 111US

Choose One CORE: IA, IH, IS, D, W

## Math Level 400 (15 credits)

BIOB 170IN

CHMY 141/142

M161Q

CLS 101US or COMX 111US

## Math Level 150 (14 credits)

BIOB 170IN

M 090

CLS 101US or COMX 111US

Choose One CORE: IA, IH, IS, D, W

## Math Level 300 (16 credits)

BIOB 170IN

M121Q

CLS 101US or COMX 111US

Choose One CORE: IA, IH, IS, D, W

## Math Level 100 (16 credits)

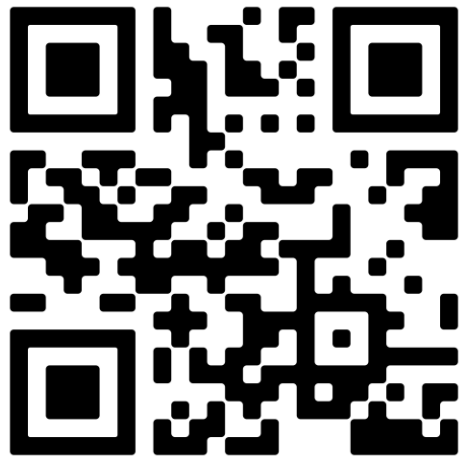
BIOB 170IN

M 063 + M 090 (5 cr)

CLS 101US or COMX 111US

Choose One CORE: IA, IH, IS, D, W

# Biology Teaching Option



## **Math Level 500 (14 credits)**

BIOB 170IN  
CHMY 141/142  
STAT216Q  
US CORE or WRIT 101W

## **Math Level 250/290 (15 credits)**

BIOB 170IN  
M 121Q + M 021 (5 cr.)  
US CORE or WRIT 101W  
HDFS 101IS

## **Math Level 400 (14 credits)**

BIOB 170IN  
CHMY 141/142  
M161Q  
US CORE or WRIT 101W

## **Math Level 150 (14 credits)**

BIOB 170IN  
M 090  
US CORE or WRIT 101W  
HDFS 101IS

## **Math Level 300 (16 credits)**

BIOB 170IN  
M121Q  
US CORE or WRIT 101W  
HDFS 101IS

## **Math Level 100 (15 credits)**

BIOB 170IN  
M 063 + M 090 (5 cr)  
US CORE or WRIT 101W  
HDFS 101IS

# Teaching



**David Reese**

Advisor

[Book an appointment](#)



**RC Townsend**

Advisor

[Book an appointment](#)

- In this program, you have two advisors. Your assigned **Program Advisor** and for any education questions meet with an **education advisor**: RC Townsend or David Reese.
- For an example: student teaching, licenses, teaching education program requirements/application.



*EDUCATION ADVISING*

# Program Assessment for the Department of Ecology

---

- All incoming Freshman pursuing a B.S. in Biological Sciences are required to complete Program Assessment 1 and 2
- Program Assessment 1 – Start of Freshman Year prior to taking their first course at MSU
- Program Assessment 2 – End of Senior Year prior to graduation
- We are attempting to review the Degree Program and Courses offered by the Ecology department
- Good news—it's not graded. You can't fail this assessment
- We are not assessing you specifically, we are assessing the content and material you are learning over 4 year

# Questions?



**SIGN-IN PLEASE!**

**Username:**

**.\student**

**Password:**

**MSU4You!**





# Today: DegreeWorks Plan Advisor-approved list of classes!

2023 Fall		Total Credits: 17.0			
Critical	Course Requirement			Credits	
<input type="checkbox"/>	PHSX 220	Q	i	4.0	
<input type="checkbox"/>	COMX 111US	Q	i	3.0	
<input type="checkbox"/>	M 171Q	Q	i	4.0	
<input type="checkbox"/>	EMEC 100	Q	i	1.0	
<input type="checkbox"/>	EMEC 103	Q	i	2.0	
<input type="checkbox"/>	AMST 101D	Q	i	3.0	
Critical	Choice Requirement				
<input type="checkbox"/>					...
Placeholder Requirement				Value	
Comment				IA CORE, IH CORE, IS CORE	

# Tomorrow: Registration in CatCourse Pick your actual schedule!

## Add Courses for 2023 Fall Semester

By Subject    Search CORE Courses    DegreeWorks

Degree Plan: First Semester Freshman Year

Plan Term: 2023 Fall Semester

Select All

- Backup: ECHM 205CS, NASX 232D, GPHY 121D
- Business: General 104US - Business & Entrepreneurship Fundamentals Seminar
- Biology-General 105CS - Introduction to Biotechnology
- Economics 101IS - Economic Way of Thinking
- Mathematics 161Q - Survey of Calculus
- Native American Studies 105D - Introduction to Native American Studies

[Return to Generate Schedules](#)    [+ Add](#)

### Courses

- BGEN 104US**  
Business & Entrepreneurship Fundamentals Seminar
- BIOB 105CS**  
Introduction to Biotechnology
- ECNS 101IS**  
Economic Way of Thinking
- M 161Q**  
Survey of Calculus
- NASX 105D**  
Introduction to Native American Studies

	Monday	Tuesday	Wednesday	Thursday	Friday
8am					
8:15					
8:30					
8:45					
9am	<b>BIOB-105CS</b> ROMNEY 306 Face to Face		<b>BIOB-105CS</b> ROMNEY 306 Face to Face		<b>BIOB-105CS</b> ROMNEY 306 Face to Face
9:15					
9:30					
9:45					
10am	<b>M-161Q</b> ROMNEY 415 Face to Face	<b>M-161Q</b> ROMNEY 415 Face to Face		<b>M-161Q</b> ROMNEY 415 Face to Face	<b>M-161Q</b> ROMNEY 415 Face to Face
10:15					
10:30					
10:45					
11am	<b>BGEN-104US</b> JABS 405 Face to Face		<b>BGEN-104US</b> JABS 405 Face to Face		<b>BGEN-104US</b> JABS 405 Face to Face
11:15					
11:30					
11:45					
12pm					
12:15		<b>ECNS-101IS</b> GAINES 101 Face to Face Hill, Andrew J.		<b>ECNS-101IS</b> GAINES 101 Face to Face Hill, Andrew J.	<b>NASX-105D</b> AIH 102 Face to Face
12:30					
12:45					
1pm					
1:15					
1:30					
1:45					
2pm					
2:15					
2:30					
2:45					
3pm					
3:15	<b>NASX-105D</b> LJH 339 Face to Face		<b>NASX-105D</b> LJH 339 Face to Face		
3:30					
3:45					
4pm					

# Before you leave:

- Have ALL your questions answered
- Have your DegreeWorks Plan checked & locked by an advisor
- Have backup Core classes noted in your DegreeWorks Plan



**Extra Advising Help Times  
During Orientation in  
Wilson Hall 1-106!**

**Wednesday 9:00 am – 4:30 pm**

# Your Checklist for Registration Lab

- Show up to Roberts Hall Computer Labs at your assigned registration times
  - Keep an eye out for text or email updates
- Bring your CLS Folder (any notes you took today)
- Take a picture of the GOLD SHEET before you turn it in, remember to look at the picture tomorrow in the labs
- Try to register with the information you have, ask for help when you need it!

