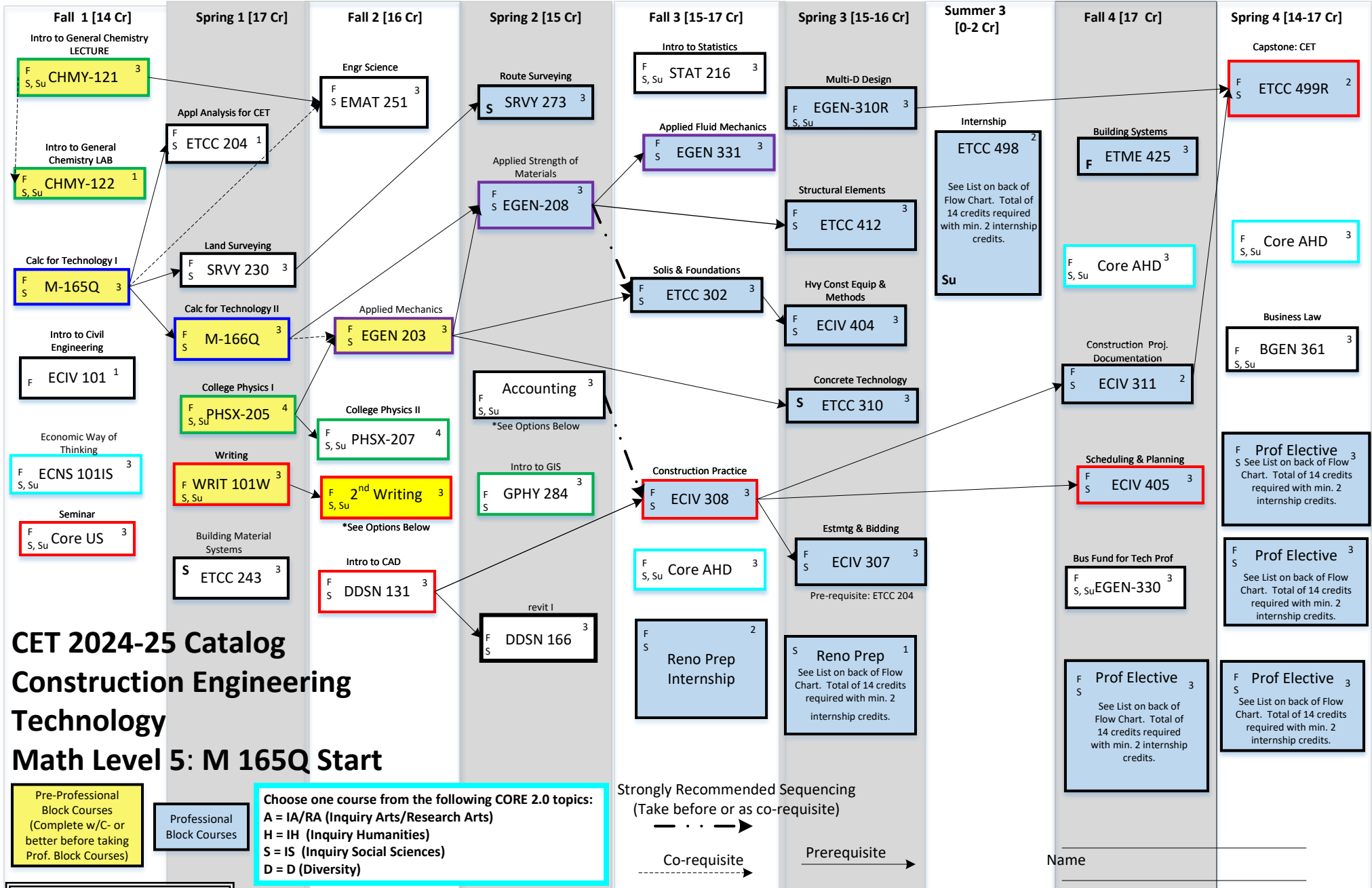


1<sup>st</sup> Year

2<sup>nd</sup> Year

3<sup>rd</sup> Year

4<sup>th</sup> Year



**CET 2024-25 Catalog  
Construction Engineering  
Technology  
Math Level 5: M 165Q Start**

Pre-Professional Block Courses (Complete w/C- or better before taking Prof. Block Courses)

Professional Block Courses

Choose one course from the following CORE 2.0 topics:  
 A = IA/RA (Inquiry Arts/Research Arts)  
 H = IH (Inquiry Humanities)  
 S = IS (Inquiry Social Sciences)  
 D = D (Diversity)

PROFESSIONAL ELECTIVE COURSES – SEE BACK OF FLOWCHART

2<sup>nd</sup> Writing: (Choose one) BMGT 205, WRIT 221, WRIT 201, HONR 202

Accounting (Choose one):  
 ACTG 201 (F,S,Su) Prin. Of Accounting(Pre-req. M 121Q) (Req. for Bus Admin Minor)  
 BGEN 210 (F,S) Accounting and Finance Basics (Pre-req. M 121Q, STAT 216Q or math level 4 or 5)

Strongly Recommended Sequencing (Take before or as co-requisite)

Co-requisite

Prerequisite

2024-25 For planning purposes: The MSU catalog displays official degree and prerequisite requirements. Some courses from prior catalogs have been discontinued or replaced. It is recommended that students on 2012-2023 catalogs follow this flowchart to complete their degree requirements.)

Name \_\_\_\_\_

MSU GID \_\_\_\_\_

Science Content

Communication Content

Mechanics Courses

Math Courses

2024-25 Construction Engineering Technical Professional Electives (Total of 14 cr-hrs required. At least 2 credits from Internship elective section) Revised 6/24

Rubric	Number	Cr Hrs	Title	Offered	Prerequisite
BMGT	322	3	Operations Management	F, S, Su	STAT 216 and Junior Standing
BMGT	329	3	Human Resource Management	F, S	BMGT 335 and BGEN 361
BMGT	335	3	Management & Organization	F, S, Su	Junior Standing
BMGT	410	3	Sustainable Business Practices	S	BMGT 335 and BMKT 325
BMKT	325	3	Principles of Marketing	F, S, Su	ECNS 101
DDSN	245	3	Civil Drafting	F, S	DDSN 131
DDSN	266	3	Revit II	F	DDSN 166
ECIV	350	3	Transportation Engineering	F, S	Junior Standing
ECIV	406	3	Sustainability in Construction	S	ECIV 308
EELE	354	3	Electric Power Applications	F	M 166 and PHSX 207
EGEN	324	3	Applied Thermodynamics	F, S	PHSX 205 or 220 and Co-Req: M 166Q or 172Q
EIND	313	3	Work Design & Analysis	S	WRIT 101W
EIND	425	3	Technology Entrepreneurship	F	CSCI 111 or equiv. and EIND 354 or equiv.
EIND	434	3	Project Management for Engineers	F	Junior Standing
GPHY	384	3	Adv GIS and Spatial Analysis	F, S	GPHY 284 or Consent of Instructor
GPHY	426	3	Remote Sensing	S	Junior Standing or Consent of Instructor
GPHY	429	3	Applied Remote Sensing	S	Junior Standing or Consent of Instructor
SRVY	355	3	Surveying Calculations	S even	SRVY 230 Surveying
SRVY	361	3	Intro to Legal Principles in Surveying	F even	SRVY 230 Surveying
SRVY	362	3	Public Land Survey Systems	F odd	SRVY 230 Surveying
SRVY	375	3	Analyt Photo/Remote Sensing	F odd	M 165Q or M 171Q or M 181Q
SRVY	474	3	Project Design in Surveying	S odd	SRVY 230 Surveying; Co-req: DDSN 245

**Internship Electives - Minimum 2 Credits Required - Maximum 6 Credits Total**

ECIV	360	1-2	Estimating & Bidding Fundamentals (RENO)	F,S	Good Academic Standing
ECIV	460	1-2	Advanced Estimation & Bidding (RENO)	F,S	ECIV 360 & Good Academic Standing
ETCC	492	1-2	Independent Study	F, S, Su	Department Head approval Required
ETCC	498	1-3	Career Internship	Su	Coordination with Professor Knoll Required

Max 3 cr  
total.


- A petitioned course.
- A course from a completed minor.
- A course from a prior/concurrent BS/BA degree.
- A course from a completed Honors program.