



# Market Goat Carcass Evaluation

Dave Brink

Mineral County MSU Extension



**MONTANA**  
STATE UNIVERSITY

EXTENSION

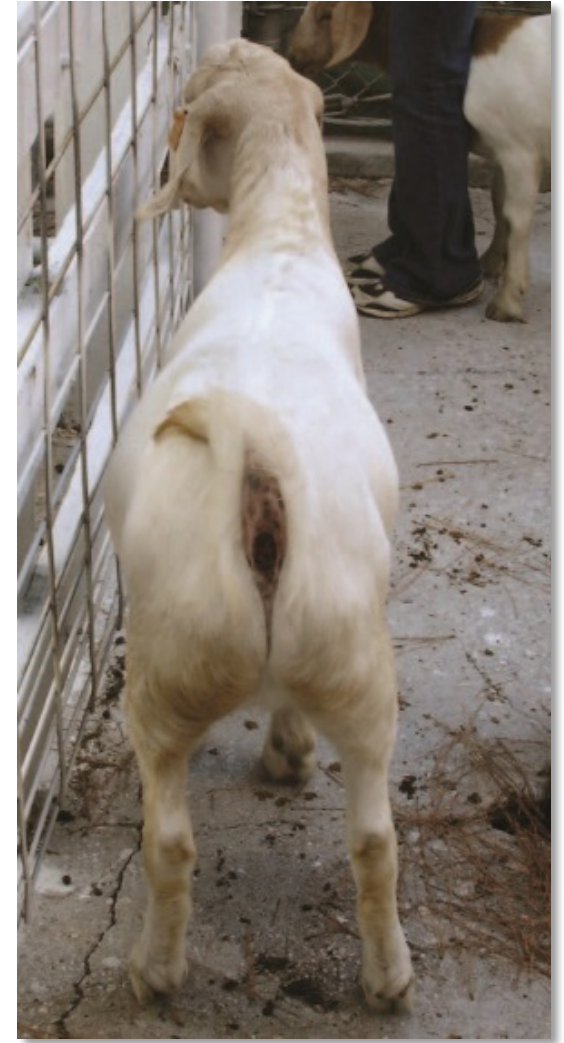
Mountains & Minds







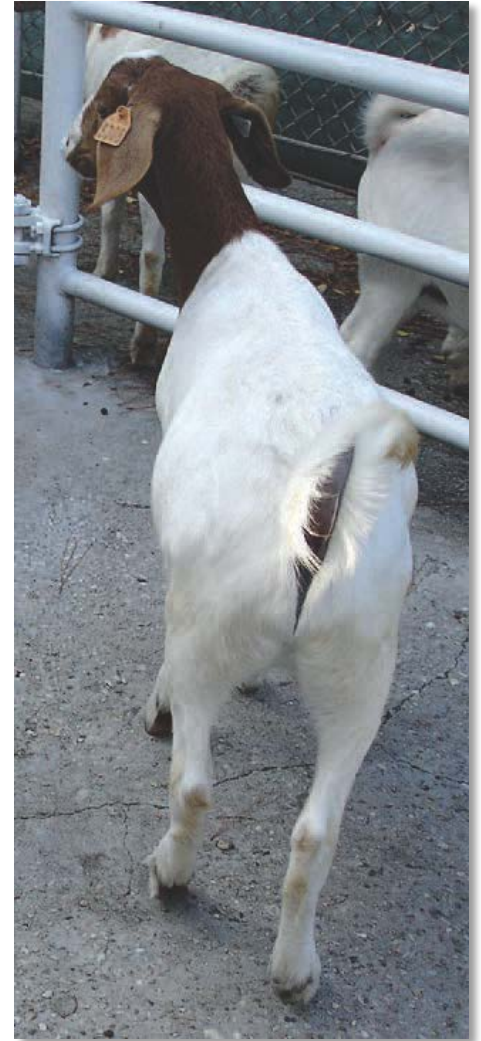
# Goat Live Conformation



**Select 1**



# Goat Live Conformation



**Select 2**





# Goat Live Conformation



**Select 3**

# Goat Live Conformation Assessment

## Selection 1

carcasses are thickly muscled throughout the body with a bulging outside leg, rounded back strip, and a moderately thick outside shoulder.

## Selection 2

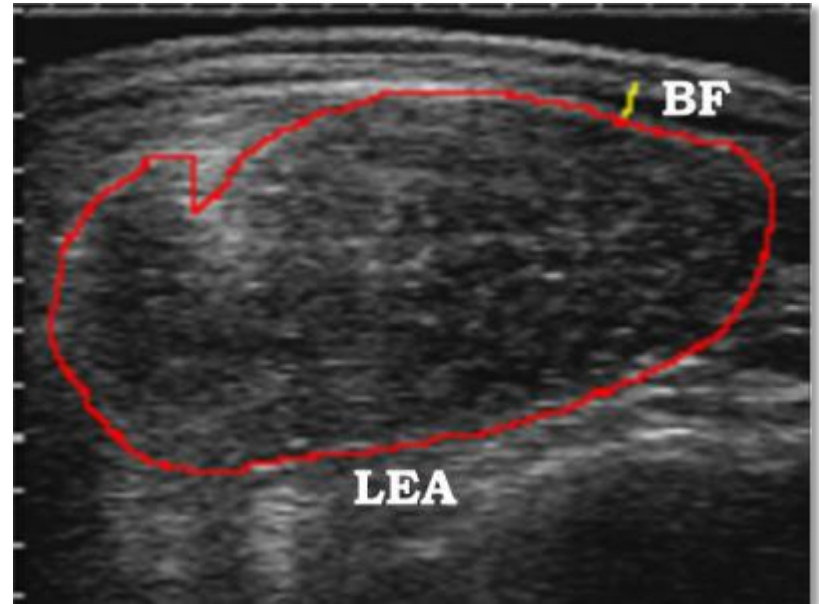
carcasses are moderately muscled throughout with a slightly bulging outside leg, flat or shallow back strip, and slightly thick outside shoulder.

## Selection 3

carcasses are thinly muscled and the legs, back and shoulders are narrow in relation with its length and they have a very angular and sunken appearance.

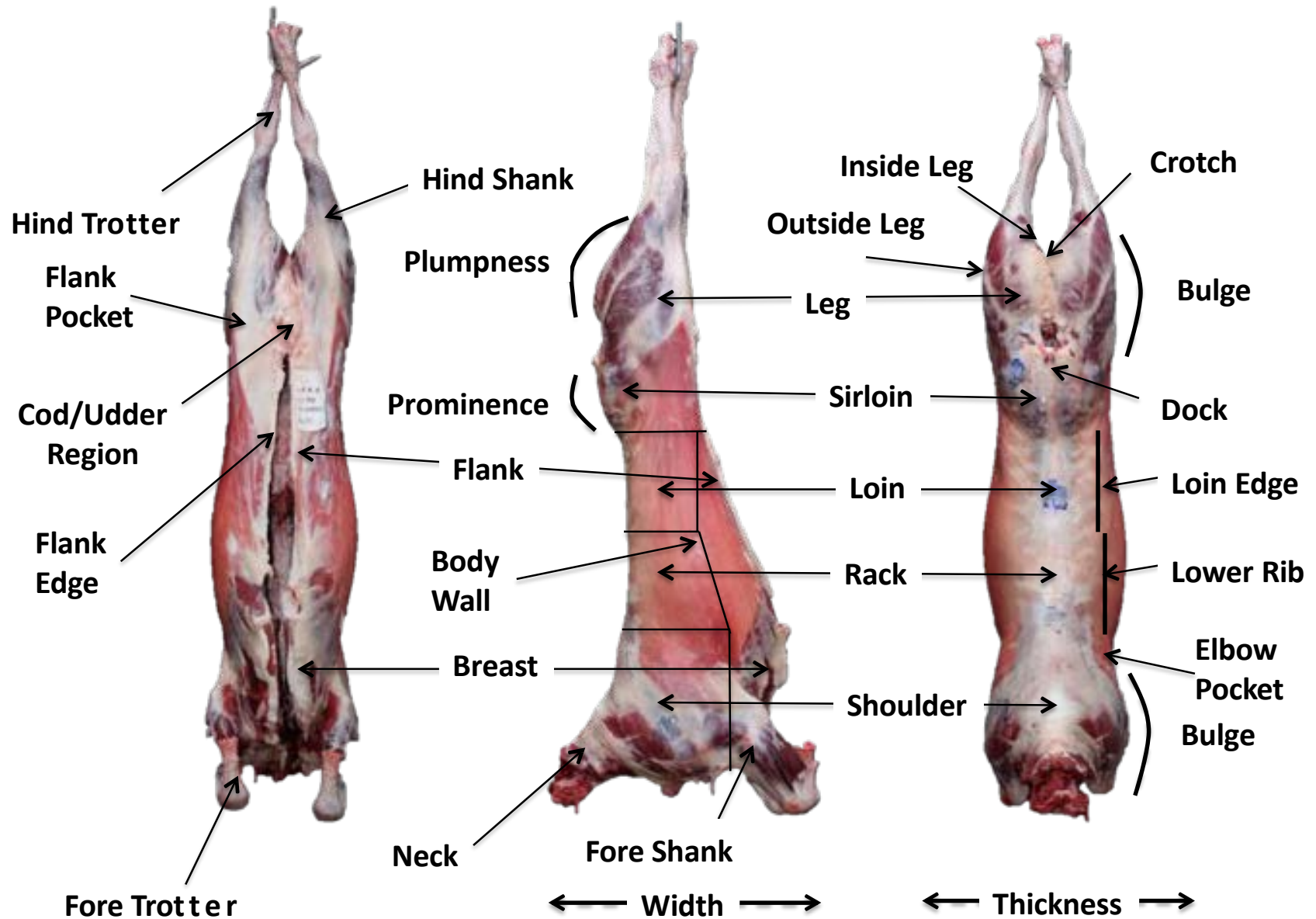


# Ultrasound Assessment



**NOTE:** Do NOT measure backfat (BF) as per lamb ultrasound. Instead, measure body wall thickness (BWT), which includes fat, bone, and lean; one inch beyond the ribeye.

# Goat Carcass Terminology







# Goat Carcass Conformation



## **Selection 1**

carcasses are thickly muscled throughout the body with a bulging outside leg, rounded back strip, and a moderately thick outside shoulder.

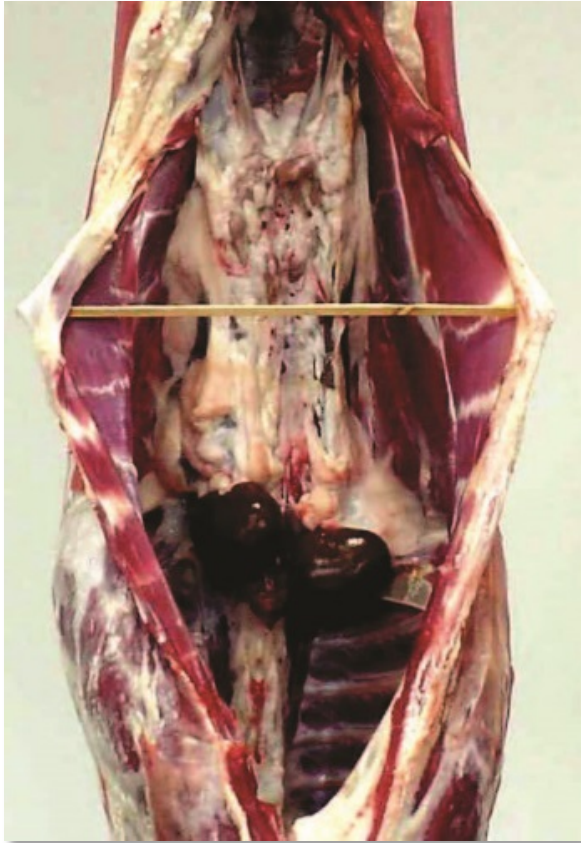


## **Selection 2**

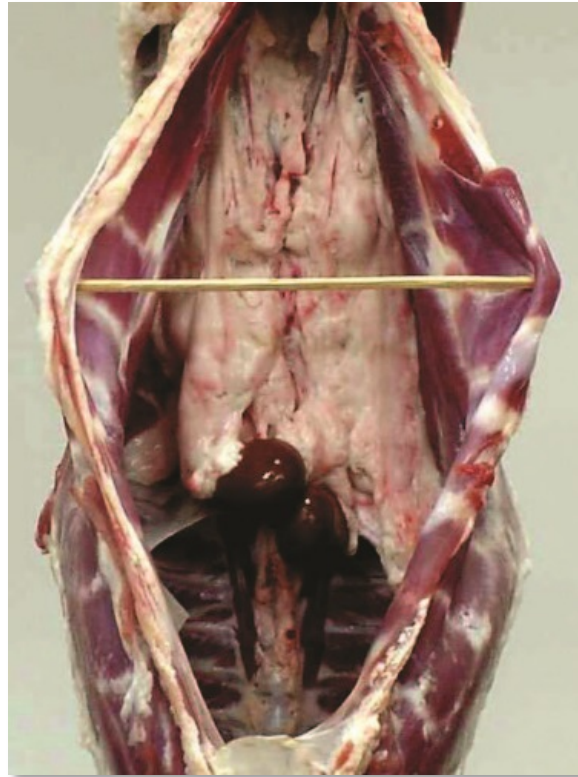
carcasses are moderately muscled throughout with a slightly bulging outside leg, flat or shallow back strip, and slightly thick outside shoulder.



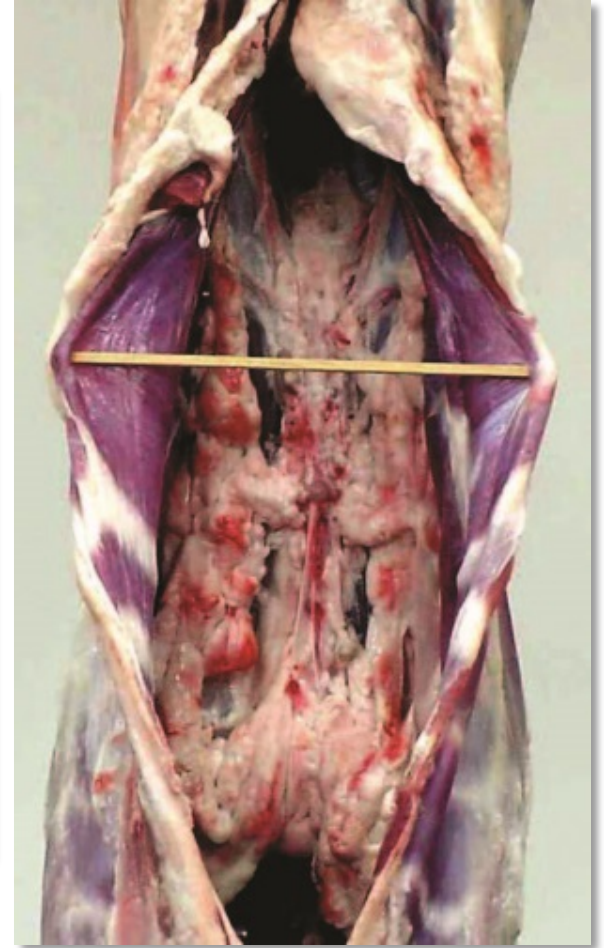
# KPH



**1%**



**2%**



**3.5%**





# SQ Fat Cover

1

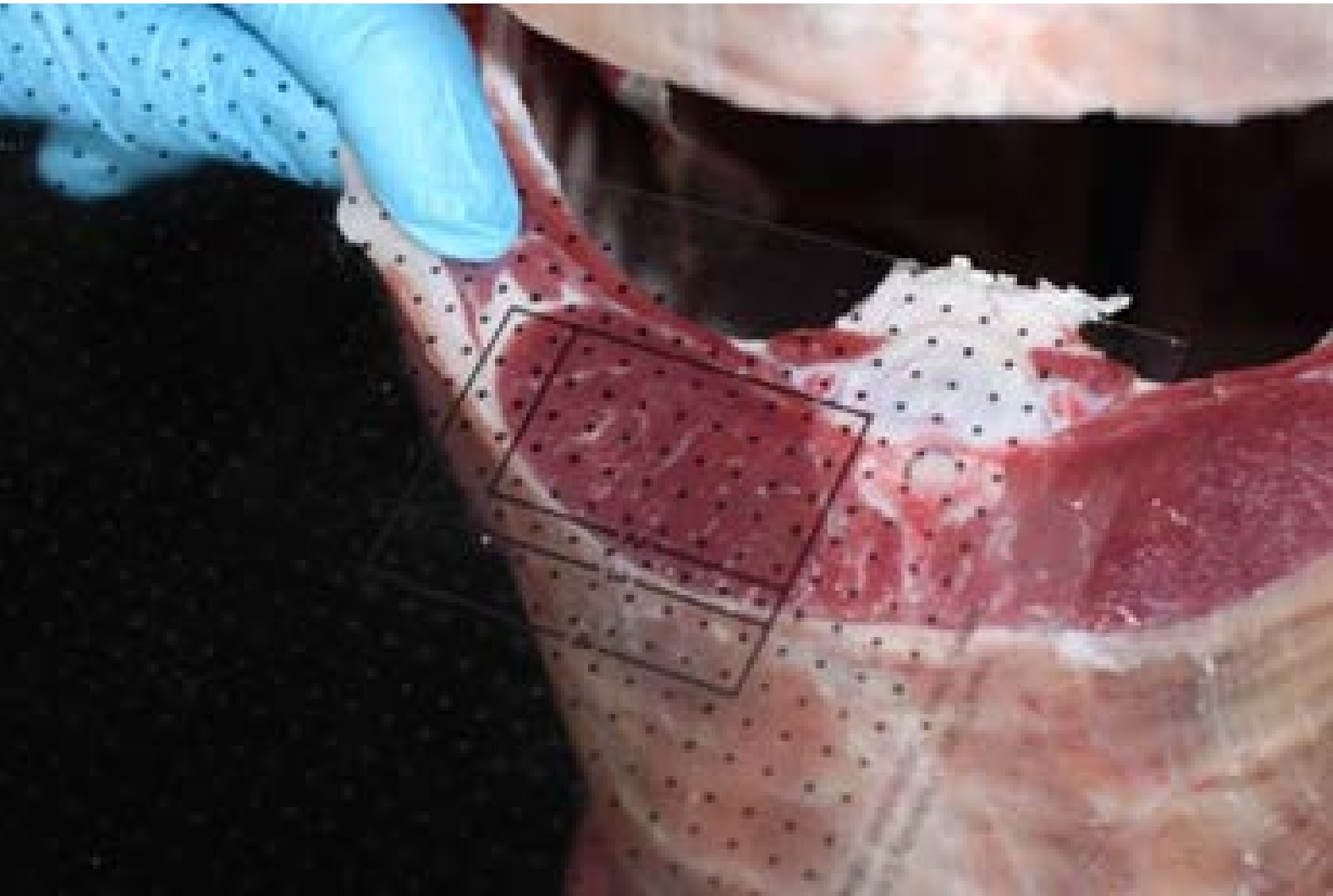
2

3





# Ribeye Area







# Body Wall Thickness (BWT)



# Questions?

**Market Goat Carcass Contest**

**Dave Brink**

**P.O. Box 730**

**Superior, MT 59872**

**(406) 822-3545**

**[dbrink@montana.edu](mailto:dbrink@montana.edu)**



**MONTANA**  
STATE UNIVERSITY

**EXTENSION**

Mountains & Minds