

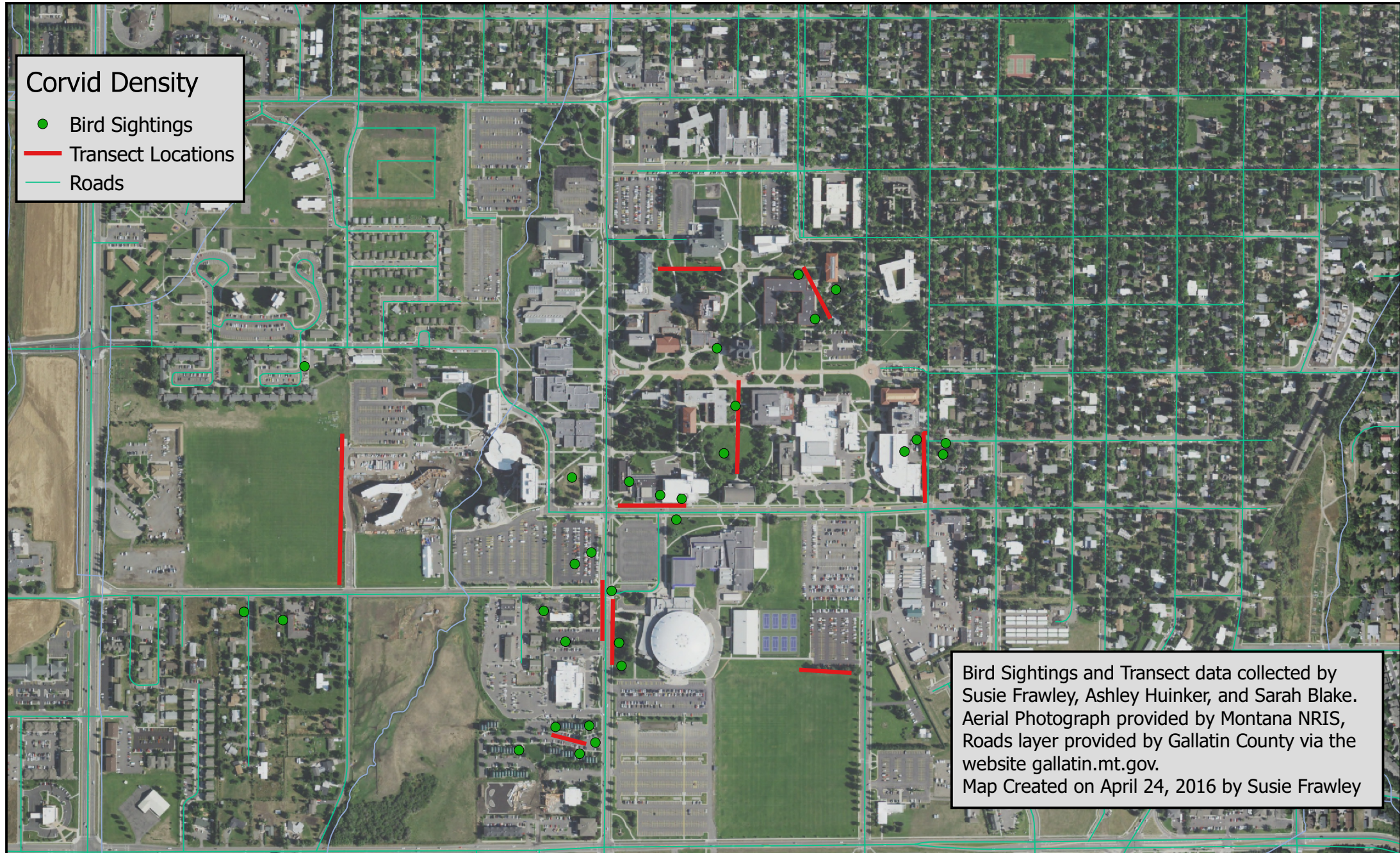
Corvid Densities in Urban Environment

0 150 300 m



Corvid Density

- Bird Sightings
- Transect Locations
- Roads



Bird Sightings and Transect data collected by Susie Frawley, Ashley Huinker, and Sarah Blake. Aerial Photograph provided by Montana NRIS, Roads layer provided by Gallatin County via the website gallatin.mt.gov. Map Created on April 24, 2016 by Susie Frawley