



Addendum

Addendum Number: #2 **Date Issued:** 01-06-2025
Project Name: MSU – Pasiley Court Housing **Project Number:** 23123-2F
Pages in Addendum: Drawings: (3) 24" x 36"
Specifications: (1) 8.5" x 11"
Addendum Narrative: (3) 8.5" x 11"
Existing Roof Information: (12) 8.5"x11"
Prepared By: Emma Survis | A&E Design
Issued To: All Bidders

The additions, clarifications, and/or corrections contained herein shall be made to the Project Specification Manual, Drawings, and Schedules for the above referenced project(s) and shall be included in the scope of work and proposals to be submitted. References made below to the Project Specification Manual and Drawings shall be used as a general guide only. Bidder shall determine the extent of work affected by Addendum items. This Addendum consists of the following (in addition to any previous addenda):

General Bid Items:

Questions Received and answered:

1. The window illustrated on Building A East Elevation is labeled as a type A, it appears to be a type B in the plans. I need to know the correct type to quote.

Should be Type B.

2. The window illustrated on Building A West Elevation is labeled as a type A, it appears to be a type B in photos. I need to know the correct type to quote.

Assume this is Building C West Elevation? Should be Type B.

3. The windows C, B, and E, are likely located in bedrooms. With the plan's stated width, they will not meet Egress requirements. Can the plans be labeled for bedrooms so modifications of sizes and notes if needed can be proposed?

This will require feedback from the City. The width of the windows was allowed in the 1984 code (when this building was built). At this time, it should be assumed that the windows will be allowed as is.

4. Comment only: Building addresses 104 and 109 on the parking lot side have 2-wide casements. The plans illustrate all these building elevations to have 1-wide casements, I don't see an alternate.

Noted.

5. My question from the email I sent last week: Information Request about GL-1 Glazing.

Tempered glass is only required where required to be safety glazing, as noted in specification section.

6. Would an LP siding product be an acceptable alternative?

LP products are not approved as an acceptable alternative.

7. Is there an anticipated extension to the project schedule?

Project schedule may be negotiable after the bid.

8. Is there an allowance amount for the landscaping everyone can carry the same amount?

Please provide a \$50,000 allowance for landscaping.

9. Please specify wood material that will be painted.

Wood material to be painted is shown on elevations and existing material unless required to be replaced to match existing.

10. What is the existing roof shingle brand, color and class?

See attached existing roof warranty.

11. In detail 3 (page 9), Drip cap is shown below the trim above the window, and above/below the bottom window trim. This is atypical, but I want to verify that it what is being requested. Z-metal above the top window trim is the only one required by manufacturers.

Window should be flashed, but the bottom window trim should be caulked to the siding.

12. In detail 4, Z-metal is not required by manufacturer specs, but do you still want it?

Yes, provide Z-flashing at base.

13. Are we replacing the address numbers on the siding?

Yes, please replace address numbers on the siding.

14. Are we using trim against the brick areas, or just siding into the brick and caulking?

Siding should be trimmed into the brick areas.

15. Are new gutters going on all eaves, or just replacing the existing sections?

New gutters should be provided where gutters were existing, see Roof Plan and verify in field.

16. Provide a unit cost for replacement of sheathing on the exterior.

17. Provide an allowance for gypsum board repair.

Project Manual (Specifications):

MSU Bid Proposal Long Form 098

Drawings:

A4.1 – EXTERIOR ELEVATIONS

UPDATED: Building A East Elevation window type tag.

A4.2 – EXTERIOR ELEVATIONS

UPDATED: Building C West Elevation window type tag.

A9.2 –DETAILS

UPDATED: Detail 3 flashing.

Prior Approvals:

Reviewing is for conformance with the design concept of the project and compliance with the information given in the contract documents. Contractor is responsible for dimensions and quantities to be confirmed and correlated to the job site; for information that pertains solely to the fabrication processes or to techniques of construction; and for coordination of work of all trades. Any substitutions shall meet the specification for the product specified. Any costs associated with modifications necessary due to a product substitution shall be the responsibility of the contractor.

Approval of a particular product does not constitute an approval of all other related products or materials within a particular system or assembly, which may also need to be submitted for separately for approval, per project specifications; where some products or materials must be sourced from the same manufacturer as adjacent or related products in the completed system or assembly, for material compatibility and/or warranty.

Section	Description	Manufacturer	Status
074646	Siding	LP Siding	Rejected
085313	Vinyl Windows	Marvin (fiberglass)	Approved
085313	Vinyl Windows	Anderson	Approved
085313	Vinyl Windows	Milgard	Approved
085313	Vinyl Windows	Jeld Wen	Approved
085313	Vinyl Windows	Sierra Pacific	Approved
085313	Vinyl Windows	Vector	Rejected
085313	Vinyl Windows	Quaker	Rejected
085313	Vinyl Windows	Weathershield	Rejected



architecture
management services
building technology
integrated energy systems

Bill Mackin
MSU Project Manager
PO Box 172760
Bozeman, MT 59717

RE: Asphalt Roof Replacement Group 2
Paisley Court, Daycare Center & Marsh Labs

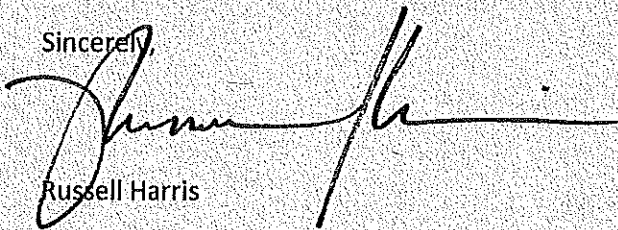
Dear Mr. Mackin,

The Group 2, Paisley Court reroofing project at Montana State University was completed on August 12, 2011. This is the date that the last of the roofs was completed. The date of substantial completion on the Certificate of Final Acceptance document, filled out by the project architect, was January 3, 2012. This difference in dates was because of the drip edge work that progressed into the fall/winter of 2011.

Our one year workmanship warranty was enacted on August 12, 2011. This is in addition to the Malarkey Manufacturer's limited warranty against manufacturing defects. Malarkey's shingle warranty is attached.

If during this warranty period there should be a problem with the roof that is a result of workmanship or installation, please call me at 586-7020.

Sincerely,




Russell Harris



Limited Warranty Information for Asphalt Shingles



Owner's Name: MSU Family Housing

Contractor's Signature: 

Address: 1502 W Garfield

Date of Application: 08/12/2011
(mm) (dd) (yy)

Bozeman, MT. 59715

Product Applied: Cambridge

Contractor's Name: Donaldson Construction

Color: Harvard Slate

Address: 21 North Shore Dr #4

Contract Price: \$182,822.00

Belgrade, MT. 59714

Number of Bundles: 2160

Phone #: 406-579-6386

Complete and retain for your records - do not send to IKO.

Note: This Limited Warranty form does not constitute proof of product purchase.

IKO Asphalt Shingle Limited Warranty

Congratulations on your purchase of IKO asphalt roof Shingles. Your choice gives you a roof backed by over 50 years of experience in making high quality products for homes across North America.

This brochure explains the details of the limited warranty IKO provides on your Shingles after they have been installed on your roof. Read it carefully to ensure you are well-informed about the warranty coverage for your purchase. Also, remember that your contractor or roofer is not an employee or representative of IKO. This limited warranty can only be changed if such change is in writing and signed by an authorized corporate officer of IKO. IKO is not bound by any guarantees, warranties or representations or any change to this limited warranty made by your contractor, roofer or by any other person not an authorized corporate officer of IKO. IKO's Limited Warranty and your coverage is detailed in this booklet (the "Limited Warranty"). If you have questions about that coverage, contact IKO directly for assistance.

There are many terms in this Limited Warranty that have specific meanings. For your convenience some of the terms are defined below:

"AR" means Shingles which are covered by the Limited Algae Resistance Warranty set out herein that provides for the cleaning of discoloration on the exposed face of certain Shingles caused by certain algae growth. Only Shingles shown as "AR" in the Information Tables, and Armourshake, Crowne Slate, Grandeur, and Royal Estate Shingles are covered by a Limited Algae Resistance Warranty. See the section titled "Limited Algae Resistance Warranty" for more details on this coverage.

"High Wind Application" means the installation of Shingles using the specific instructions that appear on the Shingle wrapper. Some local building codes may require additional fasteners. For "High Wind Application" of IKO Shingles, additional fasteners are required during installation. Please check your local building code and the application instructions specific to your Shingles for proper nailing and application requirements.

"IKO" in the United States means IKO Industries Inc. / in Canada it means IKO Industries Ltd.

"Iron Clad Protection" means the limited non prorated coverage provided by the IKO Limited Warranty during the Iron Clad Protection Period. Please read the section titled "IKO Iron Clad Protection Period" for more details on this coverage. The length of the Iron Clad Protection period for each Shingle is listed in the Information Tables below.

"Iron Clad Protection Period" means the initial period of the Warranty Period during which IKO provides Iron Clad Protection coverage. Please read the section titled "IKO Iron Clad Protection Period" for more details. The length of the Iron Clad Protection period for each Shingle is listed in the Information Tables below.

"Limited Warranty" means the limited warranties and your coverage provided by IKO for your Shingles as expressly set out in this document, and are the only warranties being provided by IKO.

"Maximum Liability" means the maximum obligation of IKO under the Limited Warranty, as described in the sections titled "Iron Clad Protection Period", "Beyond Iron Clad Protection Period", "Limited Wind Resistance Warranty" and "Limited Algae Resistance Warranty" whichever is applicable. Please read each of these sections carefully for more details.

"Owner" means the individual owner(s) of the single family residential home at the time that the Shingles were installed on that building. If you purchase a new residence from the builder of the home and are the first person to live in it, IKO will consider you to be the Owner, even though the Shingles had already been installed.

"Purchase" or "Purchased" means the retail purchase of the Shingles covered by this Limited Warranty.

"Shingle" or "Shingles" means the IKO asphalt shingle product identified in this Limited Warranty that was installed on the roof of the building owned by the Owner.

"Square" means 100 square feet of roof area.

"The Information Tables" means collectively the Limited Warranty Information Table and the Limited Lifetime Warranty Information Table below.

In addition to any other specific conditions set forth in this Limited Warranty, the "Warranty Conditions" are standard conditions that must be met for your IKO warranty to be valid. The Warranty Conditions include:

- The Shingles were properly installed, in strict accordance with both IKO's written installation instructions and local building code requirements; and
- The person making the Warranty claim is the Owner of the Shingles, or the person to whom the Limited Warranty was validly transferred as set out herein. For details on Warranty Transfers, please read "Transferability of Warranty" below; and
- The Shingles have a manufacturing defect that has resulted in a leak; and
- The repair or replacement must be with IKO Shingles and must be completed on the same building/structure to which the Shingles covered under this Limited Warranty were originally applied.

Depending on the type of Shingles used on the Owner's roof, other conditions described herein may also apply in order for the IKO warranty to be valid or applicable.

Limited Warranty Information Table

Name of Shingle	Warranty Period (months)	IKO "Iron Clad Protection Period" (months)	Reduction Figure (first 180 months) n*	Reduction Figure (after 180 months) m*	Maximum Liability/ Dollar Limit per Square	Standard Application/ High Wind Application Warranty (Mph) [km/h]	Algae Resistance Warranty (months)
Armourshake**	Limited Lifetime†	180	Refer to Chart A	Refer to Chart A	95	110/130 [177/210]	120
Cambridge AR**	Limited Lifetime†	180	Refer to Chart A	Refer to Chart A	40	110/130 [177/210]	120
Cambridge	Limited Lifetime†	180	Refer to Chart A	Refer to Chart A	40	110/130 [177/210]	N/A
Crowne Slate **	Limited Lifetime†	180	Refer to Chart A	Refer to Chart A	95	110/130 [177/210]	120
Grandeur **	Limited Lifetime†	180	Refer to Chart A	Refer to Chart A	75	110/130 [177/210]	120
Royal Estate**	Limited Lifetime†	180	Refer to Chart A	Refer to Chart A	45	110/130 [177/210]	120
Marathon Ultra AR**	360	60	n/225	m/900	30	60 [97]	60
Marathon 25	300	60	n/225	m/600	30	60 [97]	N/A
Marathon 25 AR**	300	60	n/225	m/600	30	60 [97]	60
Marathon 20	240	36	n/225	m/300	30	60 [97]	N/A

Chart A – Limited Lifetime Warranty Information Table

for Armourshake, Cambridge AR, Cambridge, Crowne Slate, Grandeur & Royal Estate Shingles

Name of Shingle	Warranty Period	IKO "Iron Clad Protection Period"	Reduction Figure for months 181-206	Reduction Figure for months 207-480	Reduction Figure for months 481+
Armourshake	Limited Lifetime†	180	n/260	384/480	432/480
Cambridge AR	Limited Lifetime†	180	n/260	384/480	432/480
Cambridge	Limited Lifetime†	180	n/260	384/480	432/480
Crowne Slate	Limited Lifetime†	180	n/260	384/480	432/480
Grandeur	Limited Lifetime†	180	n/260	384/480	432/480
Royal Estate	Limited Lifetime†	180	n/260	384/480	432/480

† For any non-individual owner, such as a corporation, religious entity, condominium, government entity or homeowner association, or for any non-single family residential home, the Warranty Period for these Shingles is limited to 40 years.

** Hip & Ridge Shingles used for installation of these Shingles must be Marathon Ultra AR, IKO Ultra HP, IKO Hip & Ridge 12 or an IKO approved equivalent product.

n* - refers to the number of months that have passed since the Shingles were installed on the building.

m* - refers to the number of months greater than 180 that have passed since the Shingles were installed on the building.

EXAMPLE - A manufacturing defect resulting in leaks is found in October 2029 in Shingles Purchased with a 25 year limited warranty. The Shingles were purchased in October 2011; 18 years, or a total of 216 months have elapsed since Purchase. IKO's warranty obligation will be reduced by $(180/225 = .80) + (36/600 = .06) = .86$. So IKO's maximum obligation would be 14% (100 - 86) of the cost of the replacement Shingles.

Asphalt Shingle Limited Warranty

LIMITED WARRANTY

IKO provides a Limited Warranty to the original Owner of its Shingle products. The coverage provided by this Limited Warranty is subject to the terms and conditions listed herein. This Limited Warranty is intended to provide coverage only to the Owner and only for a manufacturing defect that results in leaks. The Limited Warranty starts on the day that the original installation of the Shingles on the roof is completed, and coverage is limited to the length of time listed in the Information Tables for the specific Shingles product installed on the Owner's roof (the "Warranty Period"). The Limited Warranty provides the Owner specific legal rights, but the Owner may also have other legal rights. Those rights will vary from state to state or province to province. In situations where the coverage given includes a dollar value, it is meant to be given in the currency of the country in which the building is located.

IRON CLAD PROTECTION PERIOD

IKO offers Iron Clad Protection as set out below for every Shingle listed in the Information Tables. The length of the Iron Clad Period varies by Shingle product. Refer to the Information Tables to find the Iron Clad Protection Period for your Shingles. The Iron Clad Period starts on the day of installation of the Shingles on the Owner's roof. This coverage is limited to the amount of time shown in the Tables for your Shingles. During the Iron Clad Protection Period, IKO will, at its option, either repair or replace affected Shingles if all Warranty Conditions are met (the "Iron Clad Protection").

If there is a valid claim during the Iron Clad Period, IKO's Maximum Liability is limited to the reasonable cost of placing new Shingles on the Owner's roof. This means that IKO will supply replacement Shingles similar to those already on the roof, plus a reasonable allowance for the cost of applying the new Shingles. Other costs, such as flashings, metal work, vents or repair of any other damages or expenses incurred or claimed, removal of the existing shingles from the roof (tear-off), and disposal of the existing Shingles, are not covered by the Iron Clad Protection or by other terms of the Limited Warranty, including during the Iron Clad Protection Period.

BEYOND IRON CLAD PROTECTION PERIOD

Once the Iron Clad Period expires, the Limited Warranty provides certain outlined coverage to the Owner for the remainder of the Warranty Period outlined in the Information Tables for the Shingle product on your roof (the "Beyond Iron Clad Protection Period"). This coverage during the Beyond Iron Clad Protection Period will apply only if the Warranty Conditions have been met.

During the Beyond Iron Clad Protection Period, IKO's Maximum Liability is the prorated portion of the replacement Shingles required at the time the claim was reported to IKO. Alternatively, if IKO decides it cannot reasonably provide replacement Shingles, IKO may offer coverage based upon the prorated value of the maximum liability per square shown in the Information Tables. Other costs, including labor, tear-off and disposal of the existing Shingles, other shingles, roof, flashings, metal work, vents or repair of any other damages or expenses incurred or claimed are not covered by the Limited Warranty. The formula used to calculate the coverage available is shown in the Information Tables.

LIMITED WIND RESISTANCE WARRANTY

For Armourshake, Cambridge AR, Cambridge, Crowne Slate, Grandeur and Royal Estate Shingles only, during the first 15 years after they are installed on the Owner's roof, the IKO Shingles carry a Limited Warranty for wind "blow-off" for Shingles lost from the roof due to wind gusts not exceeding certain maximum speeds (a "Limited Wind Resistance Warranty"). Each type of these Shingles carries a maximum wind resistance limit for this coverage. Please refer to the Information Table for the wind speed limits for the Shingles on your roof.

For all other shingles, during the first 5 years after they are installed on the Owner's roof, the IKO Shingles carry a Limited Wind Resistance Warranty for wind "blow-off" for Shingles lost from the roof due to wind gusts not exceeding certain maximum speeds. Each type of these Shingles carries a maximum wind resistance limit for this coverage. Please refer to the Information Tables for the wind speed limits for the Shingles on your roof.

For Shingles specified below in this section, the use of a High Wind Application will increase the limit of the maximum wind resistance under the Limited Wind Resistance Warranty (a "High Wind Resistance Limited Warranty"). The wind speed limits for the High Wind Resistance Limited Warranty for those Shingles are listed in the Information Tables. If additional nails as listed are used for the following shingles, the maximum wind speed increases to one hundred thirty (130) mph (two hundred ten (210) km/h);

- (i) three (3) additional (8 in total) nails for Crowne Slate,
- (ii) two (2) additional (6 in total) nails for Cambridge AR, Cambridge, Grandeur and Royal Estate,
- (iii) one (1) additional (6 in total) nail for Armourshake.

In addition, for the High Wind Resistance Limited Warranty to apply, IKO starter strip shingles must be installed at all eaves and rakes, and IKO Hip and Ridge shingles must be used on all hips and ridges. Also:

- (i) the Limited Wind Resistance Warranty will only apply if: (a) the Shingles were installed in strict accordance with the instructions on the wrapper and (b) for installations in Canada during the fall, winter or in cool weather, the Shingles have been manually sealed at the time of installation, and for installations at all other times in Canada, and at all times in the U.S., the Shingles have been manually sealed at the time of installation, or have had the opportunity to seal down;
- (ii) the High Wind Resistance Limited Warranty will only apply if: (a) the Shingles were installed in strict accordance with the instructions on the wrapper and (b) for installations in Canada, the Shingles have been manually sealed at the time of installation, and for installations in the U.S., the Shingles have been manually sealed at the time of installation, or have had the opportunity to seal down.

Shingles that are installed in cool seasons or weather may not seal until weather conditions are adequate to allow the self seal down strip to activate. Please see the NO WARRANTY COVERAGE FOR WIND DAMAGE BEFORE SELF SEALING STRIPS SEAL paragraph in this Limited Warranty for more information regarding the self sealing strip. Please consult your roofer, shingle dealer, the product packaging or our website at www.iko.com for more information on the application instructions for your Shingles.

For valid claims under the Limited Wind Resistance Warranty (where the warranty conditions are satisfied), IKO's Maximum Liability is to provide replacement Shingles for those Shingles lost from the roof due to 'blow-off', or alternatively, IKO will pay for the reasonable cost of manually sealing unsealed Shingles. Other costs, such as labor, tear-off, removal or disposal costs of Shingles, other shingles, roof, flashings, metal work, vents or repair of any other damages or expenses incurred or claimed, are not covered by the Limited Wind Resistance Warranty or otherwise.

NO LIMITED WIND RESISTANCE WARRANTY COVERAGE FOR WIND DAMAGE BEFORE SELF-SEALING STRIPS SEAL

All Shingles that contain a factory applied self sealing strip must be subjected to direct sunlight and warm temperatures for several days before full sealing will occur. Shingles installed in the fall or winter may not seal until the following spring. Shingles which do not receive direct sunlight, or which are not exposed to adequate surface temperatures may never seal. Damage to the factory self sealing strip by dust, sand or foreign matter will prevent the sealing strip from activating. This is the nature of shingles and failure to seal down under such circumstances is not a manufacturing defect. IKO will not be responsible for any blow-offs or wind damage that may occur prior to thermal sealing having occurred. After the Shingles have sealed, the Limited Warranty that commenced at installation will cover wind damage or blow-offs, in accordance with the terms listed in the "Limited Wind Resistance Warranty" section of this booklet.

LIMITED ALGAE RESISTANCE WARRANTY

Some IKO Shingles carry a Limited Warranty against discoloration caused by the development of blue-green algae on the exposed face of the Shingles. Please refer to the Information Tables to see whether your Shingles carry this coverage and for the period of coverage provided. If there is a valid claim under the Limited Algae Resistance Warranty, (where all the Warranty Conditions are satisfied), IKO's Maximum Liability is to provide the Owner with a labor payment certificate. The certificate will pay the reasonable costs of cleaning the affected Shingles up to a maximum value of \$15 per square. This maximum value will be prorated based upon the number of months that the Shingles have been installed on the Owner's home at the time the claim is filed, divided by the maximum period of coverage listed in the Information Tables.

NON-TRANSFERABILITY OF LIMITED WARRANTY

This Limited Warranty provides rights to, and can only be enforced by the original Owner, or to a person to whom the Limited Warranty is allowed to be and is validly transferred as detailed below in the section titled "Limited Transferability of Limited Warranty". No other person or business can claim coverage or has rights under the Limited Warranty. In addition, IKO does not provide any warranty for Shingles purchased in Canada and installed in the United States or elsewhere not in Canada. Also, IKO does not provide any warranty for Shingles purchased in the United States and installed in Canada or elsewhere not in the United States.

LIMITED TRANSFERABILITY OF LIMITED WARRANTY

The Limited Warranty for your Shingles is intended to primarily provide coverage only to the original Owner of the Shingles. Certain limited provisions of the Limited Warranty and only for a limited period, as outlined below, may be transferred by the original Owner to the next property owner only once during the Limited Warranty period, and only during the first 10 years of the Warranty Period. If the original Owner dies, the Limited Warranty cannot be transferred to the Owner's estate or to anyone else. In the absence of a permissible and valid transfer of the Limited Warranty as set out herein, the Limited Warranty ends on the sale or other transfer of the property.

To transfer certain provisions of the Limited Warranty from the original Owner during the first 10 years of the Warranty Period, the Owner must complete the following steps:

- Notification of a request for transfer must be received in writing by IKO at the Quality Services Office. Both the Canadian and US Office addresses are listed below in the section entitled "Notification of Claims". Notification must be received within 30 days of the completion of the real estate transfer.
- The transfer request must attach the original Proof of Purchase for the Shingles, and a copy of the property transfer documents.
- The transfer request must also include payment in full of a \$100 transfer fee to complete the transfer.

Except for Armourshake, Cambridge AR, Cambridge, Crowne Slate, Grandeur, Royal Estate Shingles, upon the sale or transfer of the property, the Iron Clad Protection Period shall automatically terminate and for an allowable and valid transfer of the Limited Warranty, the IKO shingles will then be covered for a limited Beyond Iron Clad Protection Period on a prorated basis for the Shingles only for a period of two (2) years following the transfer of the property. Please see the Limited Warranty Information Table for the method used to calculate the Limited Warranty coverage for the two (2) year period. The Reduction Figure for these Shingles will be $n/225$.

For Armourshake, Cambridge AR, Cambridge, Crowne Slate, Grandeur and Royal Estate Shingles, if the transfer of the Limited Warranty occurs within the first 7 years (84 months) after installation, the remaining Iron Clad Protection Period will remain intact. See the section titled "Iron Clad Protection Period" for more information. If the transfer takes place more than 7 years after installation, the Iron Clad Protection Period shall automatically terminate and coverage will be calculated on a prorated basis for the Shingles, using the formula shown in the Information Tables. (The Reduction Figure in Chart A for months 85-120 shall be $n/260$.) Regardless of when the transfer occurs, the Warranty Period for a transferred Limited Warranty for Armourshake, Cambridge AR, Cambridge, Crowne Slate, Grandeur and Royal Estate Shingles is limited to 15 years from the date of original installation.

EXCLUSIONS AND LIMITATIONS

Except as and limited to what is explicitly set out in this Limited Warranty with respect to the Limited Wind Resistance Warranty and the Limited Algae Resistance Warranty, the coverage under this Limited Warranty is only for manufacturing defects that result in a leak of the Shingles on the Owner's roof, and for no other cause whatsoever. Conditions that do not result in a leak, or are not due solely to a manufacturing defect in the Shingles are not covered by the Limited Warranty or otherwise.

As a result, and without limiting the generality of the foregoing, IKO will not have any liability or obligation under the Limited Warranty or otherwise for the following:

1. Any damage that occurs during or after any improper application process, including one that fails to follow IKO's printed application instructions;
2. Any variation in the color or shading between installed Shingles on the building, including the fading or weathering of colored granules used in any of IKO's Shingle blends, backsurfacing transfer between Shingles, or asphalt staining of Shingles. IKO reserves the right to discontinue or modify any of its products, including the color blend of any Shingles, without notice to the original Owner. IKO will not be liable for any costs as a result of such modification or discontinuance of any product;
3. Any damage to the interior or exterior of any building, or any property or contents within or outside any building;
4. Any damage caused by Acts of God or other causes beyond IKO's control, including, without limitation, lightning, gale or wind (except for the coverage in the Limited Wind Resistance Warranty), hail, hurricane, tornado, earthquake, explosion, flood, fungus contamination, solid objects falling on the roof, or any other causes. This exclusion does not apply to ordinary wear and tear of Shingles caused by the elements;
5. Any damage caused by settlement, distortion or cracking of the roof deck, walls or foundation of a building. This includes failure in the materials used as a roof base, or by the presence of people, animals, machinery, equipment or any traffic of any kind on the roof;
6. Any damage caused by buckling of Shingles. The installation of Shingles on dimensional lumber (including shiplap or board decks) is not recommended as it may cause buckling of Shingles;
7. Any damage that arises after the roof is altered following the original installation of the Shingles. This includes any alteration including structural additions, changes, or replacement; or equipment installations (including but not limited to, signs, water towers, fan housings, air conditioning equipment, solar heaters, water heaters, television and /or radio antennas, satellite dishes, skylights, and equipment or machinery of any kind);
8. Any costs incurred for any, work, repairs (whether temporary or permanent) or replacements not authorized in advance in writing by IKO;
9. Costs incurred for materials, repairs or replacements where materials produced by someone other than IKO (unless authorized in advance in writing by IKO to do so);
10. Any damage that arises from any cause other than a manufacturing defect that results in a leak;
11. Any discoloration or damage due to the presence of mold, mildew, fungus, algae, biological growth or pollutant or other matter on the Shingles or roof (except for the coverage in the Limited Algae Resistance Warranty);
12. Any damage or distortion caused by inadequate ventilation either at the eaves or on the rooftop of the building. This includes failure of ventilation caused by blocked, non operative or defective vents or any other condition that renders the ventilation system ineffective. Roof system ventilation should meet local building code standards for total vent area. Ventilation must also be distributed evenly between the rooftop and the eaves of the building;
13. Any costs related to the replacement of the Shingles that is not expressly covered in this Limited Warranty. This means that unless otherwise explicitly set out in this Limited Warranty, the Limited Warranty does not cover the cost of installation, application, tear-off, removal and disposal of Shingles, other shingles, roof flashings, metal work, vents or repair of any other damages caused by or associated with any leakage, or any other costs or expenses the Owner may incur or claim;
14. Any costs related to the removal of any asbestos present in the roof on which the Shingles have been installed;
15. Any damage due to the effects of debris, resins or drippings from trees in contact with or near the Shingles. Such damage may include blisters on the Shingle surface or premature aging caused by debris or matter on the roof;
16. Any damage due to the effects of chemicals on the Shingles, whether applied to the Shingles or roof, airborne or which otherwise come in contact with the Shingles or roof. This means that this Limited Warranty does not cover the effects on Shingles or roof of any chemical including but not limited to aliphatic or aromatic solvents, chlorinated hydrocarbons, turpentine, oils, organic or inorganic polar materials or any other related materials;
17. Any damage due to the excessive use of roofing cement;
18. Any damages or failure in performance of Shingles installed over insulated roof deck panels, except as outlined below under the section "REDUCED WARRANTY COVERAGE FOR INSTALLATION OF SHINGLES ON INSULATED ROOF DECKS";
19. Any Shingle product sold with or bearing "ECONOMY NO WARRANTY" tape or marking. Such Shingle product is sold on an "As Is", no warranty basis;
20. Any damage to Shingles applied in a closed valley application, where Shingles are used to construct the valley or run-off areas on the roof. Open metal valleys are recommended for best roof performance;
21. Any claim under this Limited Warranty where the Owner deliberately or negligently misrepresents any material fact;

NO LIABILITY OR COVERAGE FOR INCIDENTAL OR CONSEQUENTIAL DAMAGES

The Limited Warranty provides coverage only for certain limited damage to Shingles that is directly caused by a manufacturing defect. IN NO EVENT SHALL IKO OR ITS AFFILIATES BE LIABLE FOR ANY INDIRECT, ASSOCIATED, INCIDENTAL OR CONSEQUENTIAL DAMAGES. This means, without limiting the forgoing, that this Limited Warranty does not cover claims for: damages to homes or other structures, interiors, exteriors, furniture, contents, appliances, loss of income, loss of enjoyment, storage fees, economic loss, or any other loss or damage. Some jurisdictions do not allow the exclusion or limitation of incidental or consequential damages, so this condition may not apply to you in those jurisdictions.

REDUCED WARRANTY COVERAGE FOR LOW SLOPE ROOFS

The Limited Warranty terms set out in this document only apply to Shingles installed on roof slopes of 4 in 12 (1:3) and steeper. The limited Warranty Period for Shingles installed on low slope roofs (i.e. those with a slope of less than 4 in 12 (1:3) and down to 2 in 12 (1:6)) is 12 years, and will be prorated for material only (with no Iron Clad Protection coverage) at an annual reduction rate of 8.33%. If certain application procedures are followed as detailed in the application instructions printed on the Shingle wrapper, the regular Limited Warranty may be available for slopes between 3 in 12 and 4 in 12 (1:4 and 1:3). Please see the product packaging or visit www.iko.com for application procedures and instructions for your Shingles, as certain Shingles may not be suitable for use on slopes below 4:12.

If you do not know the slope of your roof, please contact your contractor or roofer for assistance.

REDUCED WARRANTY COVERAGE FOR INSTALLATION OF SHINGLES ON INSULATED ROOF DECKS

The coverage under this Limited Warranty is reduced for any Shingles, which are applied to any of the following:

- a) roof deck assemblies (of slopes greater than 2 in 12) where foam insulation is prefabricated into the roof deck system (commonly known as "nail board insulation"), or
- b) where insulation is installed immediately beneath an acceptable roof deck system.

In the event that such Shingles are installed on insulated or unventilated decks the Warranty Period available to the Owner is reduced to 10 (ten) years with no Iron Clad Protection coverage. The annual reduction figure in this case shall be 10% per year.

LIMITED COVERAGE FOR REPLACEMENT SHINGLES

If IKO provides coverage under this Limited Warranty for a submitted claim, the replacement Shingles are covered by the Limited Warranty only for the remainder of the Warranty Period starting from the date of the original installation of the replaced Shingles.

SEVERABILITY

Each provision of this Limited Warranty is intended to be severable. If any provision hereof is illegal, invalid or unenforceable in whole or in part, such illegality, invalidity or unenforceability shall not affect the legality, validity or enforceability of the remainder hereof. Any provision hereof that is held to be illegal, invalid or unenforceable in any jurisdiction shall be illegal, invalid or unenforceable in that jurisdiction without affecting any other provision hereof in that jurisdiction or the legality, validity or enforceability of that provision in any other jurisdiction, and to this end the provisions hereof are declared to be severable.

NOTIFICATION OF CLAIMS

To receive coverage under the Limited Warranty, the following steps must be followed. This allows IKO the opportunity to review the claim and determine if the reported condition is covered by the Limited Warranty terms. To file a claim, the Owner must:

1. Contact IKO Quality Services within thirty (30) days of becoming aware of the alleged concern. The Owner may reach IKO toll free at the numbers listed below:
Eastern Canada 1-800-361-5836 Western Canada 1-800-521-8484 United States 1-800-433-2811
2. Provide all information requested by the IKO Quality Services representative in order to open a claim. The Quality Services representative will then forward a Homeowner Inquiry Survey to your attention.
3. Complete and sign the Homeowner Inquiry Survey. Return the completed Survey along with the following additional items:
 - a. A valid Proof of Purchase for your Shingles, which must identify that the Shingles are IKO Shingles, the model of IKO Shingle, the quantity of Shingles Purchased and the date of original Purchase.
 - b. The required clear color photos as detailed in the Survey information.
 - c. Two complete sample Shingles from the roof which demonstrate the alleged concern. (If claim is for color concerns, please send two full sample shingles of the lighter color and two full samples of the darker color.)
 - d. Any other information requested by the Quality Service representative during the original reporting call.
4. All requested materials should be provided to IKO within 30 days of the discovery of the alleged concern at the address listed below. The cost of shipping the materials required for the claim is the responsibility of the Owner. Claims materials should be sent to:

Canada
IKO Industries Ltd.
80 Stafford Drive
Brampton ON
L6W 1L4

United States
IKO Industries Inc.
235 West South Tec Drive
Kankakee IL
60901-8426

5. Provide IKO and its representative(s) with access to all of the IKO Shingles in question, and the roof and outside and inside of the building upon which it was installed for the purpose of investigating the claim, if IKO requests access. This request may include physical inspection of the roof surface, taking sample Shingles, and photographing the roof surface and the attic space, should IKO determine that such information is needed.

If the Owner fails to send in all requested information or does not otherwise comply with these steps, it may result in a delay in response to the claim and IKO is entitled to conclude that the claim is not valid and decline coverage under the Limited Warranty.

IKO will evaluate and respond according to any obligations under the Limited Warranty within approximately 60 days of receiving all necessary information needed to assess reported claim.

IMPORTANT NOTICES

This Limited Warranty replaces all other oral or written warranties, liabilities or obligations of IKO. There are no other warranties which extend beyond the limited warranty described in this document. IKO will not be liable for any oral statement or other written statement about any IKO Shingle, whether such statements are made by an agent or employee of IKO or by any other person. IKO does not authorize its representatives, distributors, contractors or dealers to make any changes or modifications to this limited warranty. EXCEPT WHERE PROHIBITED BY LAW, THE OBLIGATION CONTAINED IN THIS LIMITED WARRANTY IS EXPRESSLY IN LIEU OF ANY OTHER OBLIGATIONS, WARRANTIES, CAUSES OF ACTION, CONDITIONS, EXPRESS OR IMPLIED, INCLUDING ANY IMPLIED CONDITION OF MERCHANTABILITY OR FITNESS FOR A PARTICULAR PURPOSE, AND EXCEPT FOR THE OBLIGATION EXPRESSLY CONTAINED IN THIS LIMITED WARRANTY, LIABILITY IS EXCLUDED RELATING TO, IN CONNECTION WITH, OR ARISING FROM, ANY RIGHT, CLAIM, REMEDY AND CAUSE OF ACTION AGAINST IKO OR ANY OF ITS AFFILIATED OR RELATED COMPANIES, OR THEIR AGENTS, OFFICERS, DIRECTORS AND EMPLOYEES, INCLUDING, WITHOUT LIMITATION, STRICT LIABILITY, STATUTE, TORT, NEGLIGENCE, WAIVER OF TORT AND INDIRECT, ASSOCIATED, INCIDENTAL OR CONSEQUENTIAL DAMAGES.

MANDATORY BINDING ARBITRATION: EVERY CLAIM, CONTROVERSY OR DISPUTE OF ANY KIND WHATSOEVER INCLUDING WHETHER ANY PARTICULAR MATTER IS SUBJECT TO ARBITRATION (EACH AN "ACTION") BETWEEN YOU AND IKO (INCLUDING ANY OF IKO'S EMPLOYEES AND AGENTS) RELATING TO OR ARISING OUT OF THE SHINGLES OR THIS LIMITED WARRANTY SHALL BE RESOLVED BY FINAL AND BINDING ARBITRATION, REGARDLESS OF WHETHER THE ACTION SOUNDS IN WARRANTY, CONTRACT, STATUTE OR ANY OTHER LEGAL OR EQUITABLE THEORY. TO ARBITRATE AN ACTION AGAINST IKO, YOU MUST INITIATE THE ARBITRATION, FOR U.S. CLAIMS, IN ACCORDANCE WITH THE RULES OF THE FEDERAL ARBITRATION ACT, TO BE CONDUCTED IN ACCORDANCE WITH THE RULES OF THE AMERICAN ARBITRATION ASSOCIATION, AND FOR CANADIAN CLAIMS, IN ACCORDANCE WITH THE ARBITRATION ACT, R.S.A. 2000, c. A-43, ALBERTA, AS MAY BE AMENDED) AND YOU MUST COMMENCE THE ARBITRATION AND PROVIDE WRITTEN NOTICE TO IKO BY CERTIFIED MAIL AT THE APPLICABLE ADDRESS NOTED ABOVE, WITHIN THE APPLICABLE TIME PERIOD PRESCRIBED IMMEDIATELY BELOW. Some jurisdictions do not allow mandatory arbitration, so the above mandatory arbitration provisions may not apply to you in those jurisdictions.

NO ACTION OR BREACH OF THIS LIMITED WARRANTY OR ANY OTHER ACTION AGAINST IKO RELATING TO OR ARISING OUT OF THE SHINGLES, THEIR PURCHASE OR THIS TRANSACTION SHALL BE BROUGHT LATER THAN ONE (1) YEAR AFTER ANY CAUSE OF ACTION HAS ARISEN OR ACCRUED. IN JURISDICTIONS WHERE STATUTORY CLAIMS OR IMPLIED WARRANTIES AND CONDITIONS CANNOT BE EXCLUDED, ALL SUCH STATUTORY CLAIMS, IMPLIED WARRANTIES AND CONDITIONS AND ALL RIGHTS TO BRING ACTIONS FOR BREACH THEREOF EXPIRE AFTER ONE (1) YEAR, OR SUCH LONGER PERIOD OF TIME IF MANDATED BY APPLICABLE LAWS, AFTER THE PURCHASE OF THE SHINGLE PRODUCT. SOME JURISDICTIONS DO NOT ALLOW LIMITATIONS ON HOW LONG AN IMPLIED WARRANTY OR CONDITION LASTS, SO THE ABOVE LIMITATION MAY NOT APPLY TO YOU IN THOSE JURISDICTIONS.

YOU FURTHER AGREE THAT YOUR CLAIM(S) WILL NOT BE CONSOLIDATED OR AGGREGATED WITH THE CLAIM(S) OF ANY OTHER PERSONS BY CLASS ACTION OR OTHERWISE WITHOUT THE WRITTEN CONSENT OF IKO.

This Limited Warranty applies to IKO Shingles sold on or after July 1, 2011 and supersedes all previously published warranties.

Shingle Warranty Group 2
Julia Martin

PPA - 11-0019



FACILITIES PLANNING
DESIGN & CONSTRUCTION
RECEIVED

APR 16 2012

MONTANA STATE UNIVERSITY

architecture
management services
building technology
integrated energy systems

Bill Mackin
MSU Project Manager
PO Box 172760
Bozeman, MT 59717

RE: Asphalt Roof Replacement Group 2
Paisley Court, Daycare Center & Marsh Labs

Dear Mr. Mackin,

The Group 2, Paisley Court reroofing project at Montana State University was completed on August 12, 2011. This is the date that the last of the roofs was completed. The date of substantial completion on the Certificate of Final Acceptance document, filled out by the project architect, was January 3, 2012. This difference in dates was because of the drip edge work that progressed into the fall/winter of 2011.

Our one year workmanship warranty was enacted on August 12, 2011. This is in addition to the Malarkey Manufacturer's limited warranty against manufacturing defects. Malarkey's shingle warranty is attached.

If during this warranty period there should be a problem with the roof that is a result of workmanship or installation, please call me at 586-7020.

Sincerely,

Russell Harris



SHINGLE WARRANTY

LIMITED PRODUCT WARRANTY:

Malarkey Roofing Products (Malarkey) warrants to the original building owner that the Malarkey shingles installed upon their roof carry a limited pro-rated warranty that the shingles are free from manufacturing defects subject to the conditions and limitations listed below.

RIGHT START PERIOD:

If, during the Right Start Period listed in Table 1, the shingles are found to have manufacturing defects, Malarkey shall at its option repair, replace or provide payments (which can, at Malarkey's option, be fulfilled by providing replacement materials) to the owner of the roof of defective material. The maximum liability shall be equal to the dollar limit expressed in Table 1, plus reasonable installation costs as defined by RS Means. After the Right Start Period, the maximum repair, replacement or payment (which can, at Malarkey's option, be fulfilled by providing replacement materials) for defective materials which cause leaks shall be an amount not to exceed the maximum dollar liability expressed in Table 1, less a percentage based on the number of months elapsed in the warranty period divided by the number of months of the Limited Product Warranty, set forth in Table 1, less all sums previously paid under this warranty.

LIMITED WIND WARRANTY:

Malarkey warrants that for up to five (5) years from the date of installation [10 years for Legacy (272), Legacy AB (273) and Ecoasis Premium (283)] the Malarkey shingles will resist damage from winds up to the wind speed listed in Table 1, subject to the terms and limitations listed below. Malarkey's wind warranty applies only if the shingles are sealed, whether by hand-sealing or by activation of the self-sealing strips. Hand-sealing is strongly recommended when the average daytime temperature is not sufficient for the shingles to self-seal during installation. Malarkey's liability under this section is, at its option to repair or replace the shingles damaged or blown off by the wind, or to pay to the owner an amount not exceeding the dollar limits expressed in Table 1. No amount shall be paid for removal of damaged shingles or the installation of replacement shingles.

In high wind areas as listed by the National Weather Service, Malarkey strongly recommends that the shingles be attached with six (6) nails as per Malarkey's Installation Instructions.

ENHANCED WIND WARRANTY:

An Enhanced Wind Warranty (winds up to the wind speed listed in Table 1, Column "Enhanced Wind Speed") is also available. In addition to all other conditions listed, roof system must include: (I) attachment of shingles using six (6) nails; (2) Malarkey Smart Start Starter Shingle (220); (3) one of the following - (I) Right Start UDL, (II) Arctic Seal 401, or any (III) Malarkey Hip and Ridge shingle [EZ Ridge (222 or 224) or Hip & Ridge Strips (225-226-227)].

ALGAE RESISTANT ROOFING SYSTEM LIMITED WARRANTY:

Should the shingles you purchased feature the Scotchgard™ Algae Resistant Roofing System from 3M, Malarkey warrants that the shingles will resist discoloration or staining due to algae growth for a period of twenty (20) years from the date of installation subject to the conditions and limitations listed below. Malarkey also offers some products with a ten (10) year Malarkey Algae Resistant Warranty. Malarkey's 10-year algae resistant shingle wrappers are labelled with an 'AR' designation instead of the Scotchgard logo. Algae growth on your shingles can cause unsightly discoloration. Malarkey's sole liability under this is to, at its option, repair or replace defective shingles or to pay to the owner an amount not exceeding the dollar limits expressed in Table 1, and reasonable installation costs as defined by RS Means. Additionally, Malarkey roofing systems with algae resistant warranties require algae resistant hip and ridge shingles. For the first twelve (12) months from the date of installation, the payment to the owner for those shingles which exhibit discoloration due to algae will be an amount not exceeding the dollar amounts expressed in Table 1 plus reasonable installation costs for your area as defined by RS Means. During the remaining warranty period the maximum repair or replacement payment will be an amount not to exceed the maximum dollar liability expressed in Table 1, less a percentage based on the number of months elapsed in the warranty period divided by the warranty period in length (years). Any costs in excess of the pro-rated adjustment are the owner's responsibility. (Warranty Continued On Reverse Side)

TABLE 1

Shingle	Term	Wind	Enhanced Wind †	Right Start Period	Dollar limit/Sq.
DuraSeal™ 20	240 mos	60 mph	n/a	3 years	\$ 50
DuraSeal™ 25	300 mos	60 mph	n/a	3 years	\$ 60
The Alaskan™	420 mos	100 mph	120 mph	5 years	\$ 75
Hurricane™ AB*	420 mos	100 mph	120 mph	5 years	\$ 80
Highlander-CS™	360 mos	70 mph	110 mph	5 years	\$ 65
Highlander-CS™ AR†	360 mos	70 mph	110 mph	5 years	\$ 70
Northwest-XL™	480 mos	80 mph	110 mph	7 years	\$ 80
Northwest-XL™ AB*	480 mos	80 mph	110 mph	7 years	\$ 85
Legacy ³	600 mos	110 mph	130 mph	10 years	\$ 95
Legacy ³ AB*	600 mos	110 mph	130 mph	10 years	\$100
Ecoasis™	480 mos	80 mph	110 mph	7 years	\$125
Ecoasis™ Premium AB*	600 mos	110 mph	130 mph	10 years	\$165

*Featuring Scotchgard™ Algae Resistant Roofing System from 3M †Featuring Algae Resistant Granules
 ‡See Limited Wind Warranty & Enhanced Wind Warranty section for details

Return to: **MALARKEY ROOFING PRODUCTS**
 P.O. BOX 17217, PORTLAND, OREGON 97217-0217



Registration of Shingle Warranty

PRODUCT USED
 (please check one)

- DuraSeal™ 20
- DuraSeal™ 25
- The Alaskan™
- Hurricane™ AB
- Highlander-CS™
- Highlander-CS™ AR
- Northwest-XL™
- Northwest-XL™ AB
- Legacy³
- Legacy³ AB
- Ecoasis™
- Ecoasis™ Premium AB

ENHANCED WIND WARRANTY

- Smart Start (220)
- Right Start UDL (55774)
- Arctic Seal (65)
- Hip and Ridge Product
 - EZ-Ridge (222)
 - EZ-Ridge XT (224)
 - Hip & Ridge Strips AB (225)
 - Hip & Ridge Strips (226)
 - 11" Hip & Ridge Strips AB (227)
- The Alaskan (229) or Hurricane (229) used as hip and ridge shingles

Warranty Period Begins on _____
 Installation Completion Date 09/10/2011

Building Owner MSU Family & Graduate Housing

Address 1502 W. Garfield

City Bozeman State MT ZIP 59715

Project Address (if different) _____

Number of squares 750

Shingle color Weathered Wood

Roofing Contractor Donaldson Construction

Address 21 North Shore Dr #4

City Belgrade State MT ZIP 59714

(please print in ink or type)

TRANSFERABILITY:

During the Right start period the ownership may transferred to the subsequent owner after notification to Malarkey, as described below. Once the transfer of the warranty has taken place, the new owner's warranty period shall be for 10 years from the date of transfer and shall be limited to the standard Limited Product Warranty, Limited Wind Warranty and Limited Algae Block Warranty (if the product features 3M's Algae Block Copper Granule system). To transfer the warranty, the current holder of the warranty must notify Malarkey in writing within thirty (30) days from the date the title to the property has changed. The following information must be provided: the name and address of the current holder of the warranty; the date of the original installation completion; proof of purchase; address of the property on which the shingle are installed; the name and address of the new owner; date of the transfer of title. If Malarkey is not notified of the transfer as outlined above, the warranty shall not transfer and Malarkey will have no further liability.

EXCLUSIONS:

This warranty covers only manufacturing defects in Malarkey shingles. This warranty covers the asphalt shingle products listed in Table 1 and sold and installed in the U.S. and Canada. It does not cover other products such as flashing and metal work or damage to shingles which is attributable in whole or in part to other causes including, but not limited to:

1. Improper installation or installation which is not in accordance with Malarkey's written instructions, including, but not limited to improper nailing or stapling of the shingles;
2. Improper ventilation. At minimum, ventilation must comply with FHA MINIMUM property standards;
3. Improper storage or handling;
4. Traffic on or over the roof;
5. Defects in or failure of flashing or metal work or material used as a roof face over which Malarkey shingles are applied;
6. Equipment installations, structural changes or other alterations to the roof after application of Malarkey shingles;
7. Settlement or distortion, failure or cracking of the roof decks, walls or foundation of the building;
8. Variations on color (shading) which may occur from the positioning of color granules on the shingles;
9. Granule sloughing due to excessive amount of granules on the shingles;
10. Impact of foreign objects;
11. Violent or unusual weather conditions such as floods and other "acts of God".
12. Fire or other casualties.

All shingles which contain a factory-applied self-sealing strip must be subjected to sunlight for several days before full sealing will occur. Shingles installed in fall or winter may not seal until the following spring; therefore, the shingles should be hand-sealed. Shingles which do not receive direct sunlight or which are not exposed to adequate surface temperatures may never seal. This is the nature of the shingles and failure to seal down under such circumstances is not a manufacturing defect. If any self-sealing shingles that have been exposed to adequate temperatures and direct sunlight fail to activate the self-sealing strips during the first year after application, Malarkey will have no liability under this warranty for such defects unless proper written notification has been made and Malarkey has been allowed the opportunity to hand-seal any non-sealed shingles at its own expense.

CLAIMS PROCEDURE:

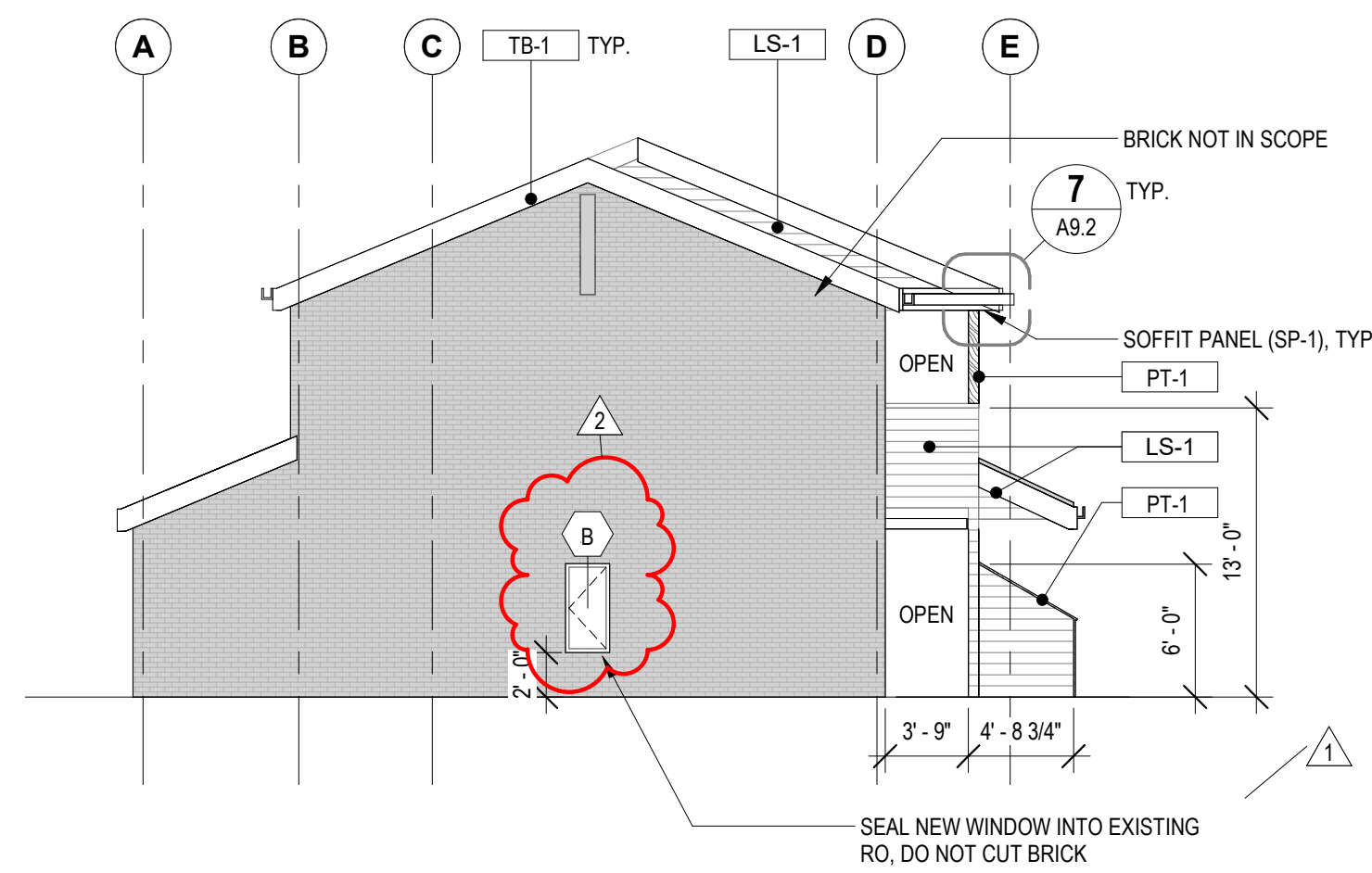
1. Claims made under the listed warranties shall be made in writing by certified or registered mail within 30 days of discovery and prior to any repairs being made and accompanied by proof of purchase.
2. Malarkey will be given the opportunity to inspect the roof and to be provided with samples before any steps are taken to repair the roof. Any repairs made prior to or during the investigation period without Malarkey's prior written approval, will be at the owner's expense.
3. After verification that the shingles are defective, Malarkey will perform its obligations under this warranty within forty-five (45) days of receipt of notice, unless performance is delayed by causes beyond Malarkey's control. Any cost in excess of the prorated adjustment will be the owner's responsibility.

THE LIMITED SHINGLE WARRANTY AND LIMITED WIND WARRANTY PROVIDED FOR THE ABOVE ARE THE ONLY EXPRESSED WARRANTIES MADE BY MALARKEY IN CONNECTION WITH THE SALE OF ITS PRODUCT. NO REPRESENTATIVE OF MALARKEY OR ANY OTHER PERSON HAS ANY AUTHORITY WHATSOEVER TO ACCEPT FROM OR FOR MALARKEY ANY ADDITIONAL OR DIFFERENT LIABILITY OR RESPONSIBILITY FOR MALARKEY PRODUCTS. MALARKEY SHALL NOT BE LIABLE FOR DAMAGE TO ANY BUILDING OR CONTENTS OR INJURY TO PERSONS OR FOR ANY CONSEQUENTIAL DAMAGES RESULTING FROM BREACH OF THE WARRANTY OR ANY OTHER WARRANTY OR CONDITION, IMPLIED BY LAW OR OTHERWISE, INCLUDING ANY IMPLIED WARRANTY OF MERCHANTABILITY OR FITNESS. SOME STATES DO NOT ALLOW THE EXCLUSION OR LIMITATION OF INCIDENTAL OR CONSEQUENTIAL DAMAGES, THIS EXCLUSION MAY NOT BE APPLICABLE IN ALL STATES. THIS WARRANTY GIVES SPECIFIC LEGAL RIGHTS, THERE MAY BE OTHER RIGHTS WHICH VARY STATE TO STATE AND PROVINCE TO PROVINCE.

This warranty will not be valid until the owner of the roof completes the attached selection and activation form and returns it to Malarkey at the address specified below. The shingle warranty may also be activated online. Please go to www.MalarkeyRoofing.com and complete the online Shingle Warranty under "Warranty Info And Registration" (found in "General Resources"). Warranty registration must be received by Malarkey within thirty (30) days of installation. Failure to comply with this condition shall void all warranties, express or implied, and the product shall be sold as is and without warranty.

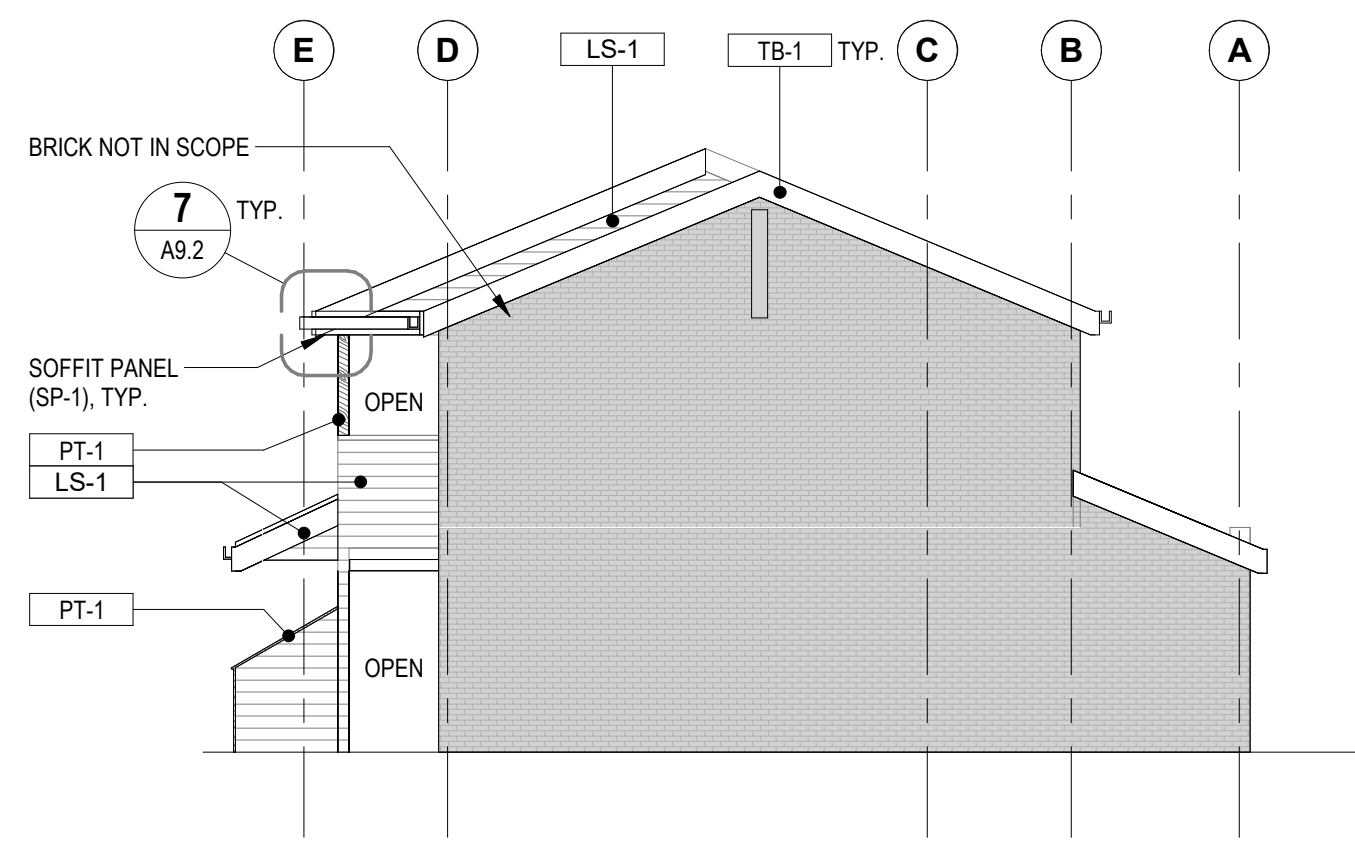
The owner should retain all documents and proofs of purchase of Malarkey products for submission to Malarkey for validation of their claim.

¹Some contractors adapt roofing shingles for use as a hip and ridge shingle. If your contractor uses this method, the Enhanced Wind Warranty will apply when The Alaska (230) or Hurricane (240) is used as hip and ridge shingles.



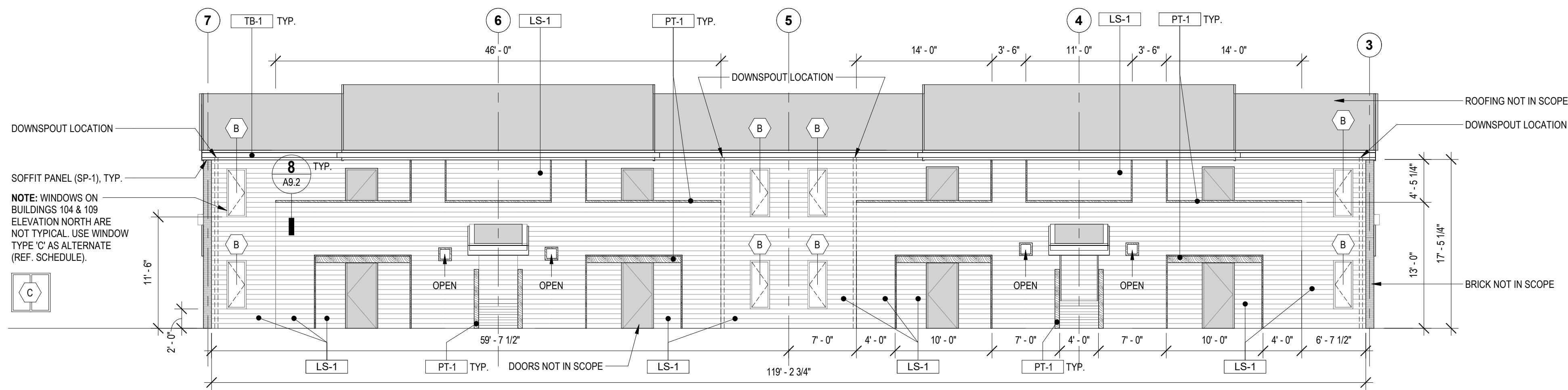
1 BUILDING A - ELEVATION EAST (TYP)
1/8" = 1'-0"

NOTE: FIELD VERIFY ALL DIMENSIONS.
DO NOT SCALE DRAWINGS.
NOTE: REFERENCE A1.1-1 FOR GUTTER LOCATIONS



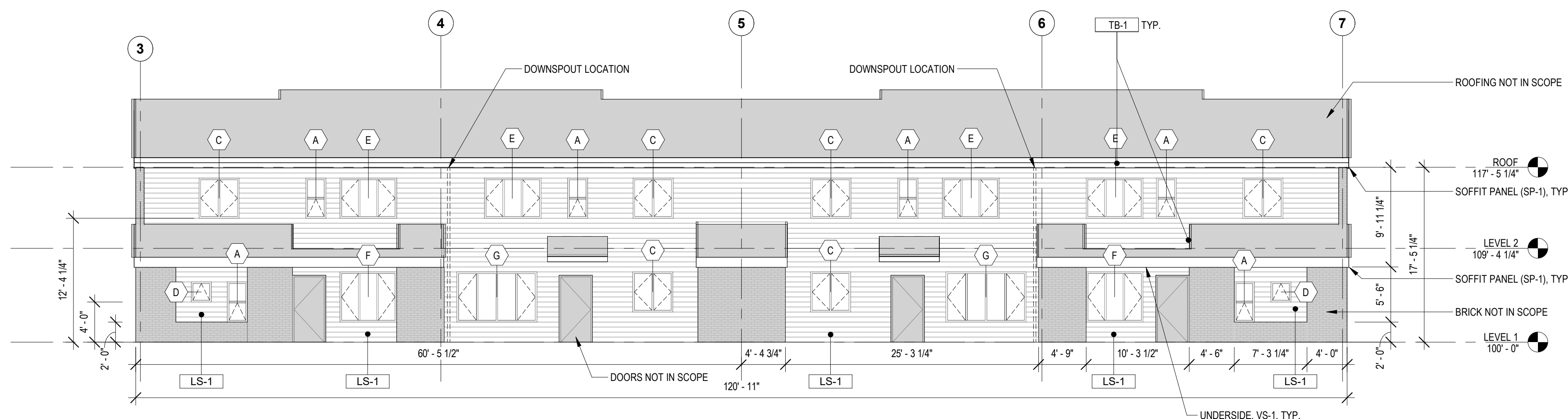
3 BUILDING A - ELEVATION WEST (TYP)
1/8" = 1'-0"

NOTE: FIELD VERIFY ALL DIMENSIONS.
DO NOT SCALE DRAWINGS.
NOTE: REFERENCE A1.1-1 FOR GUTTER LOCATIONS



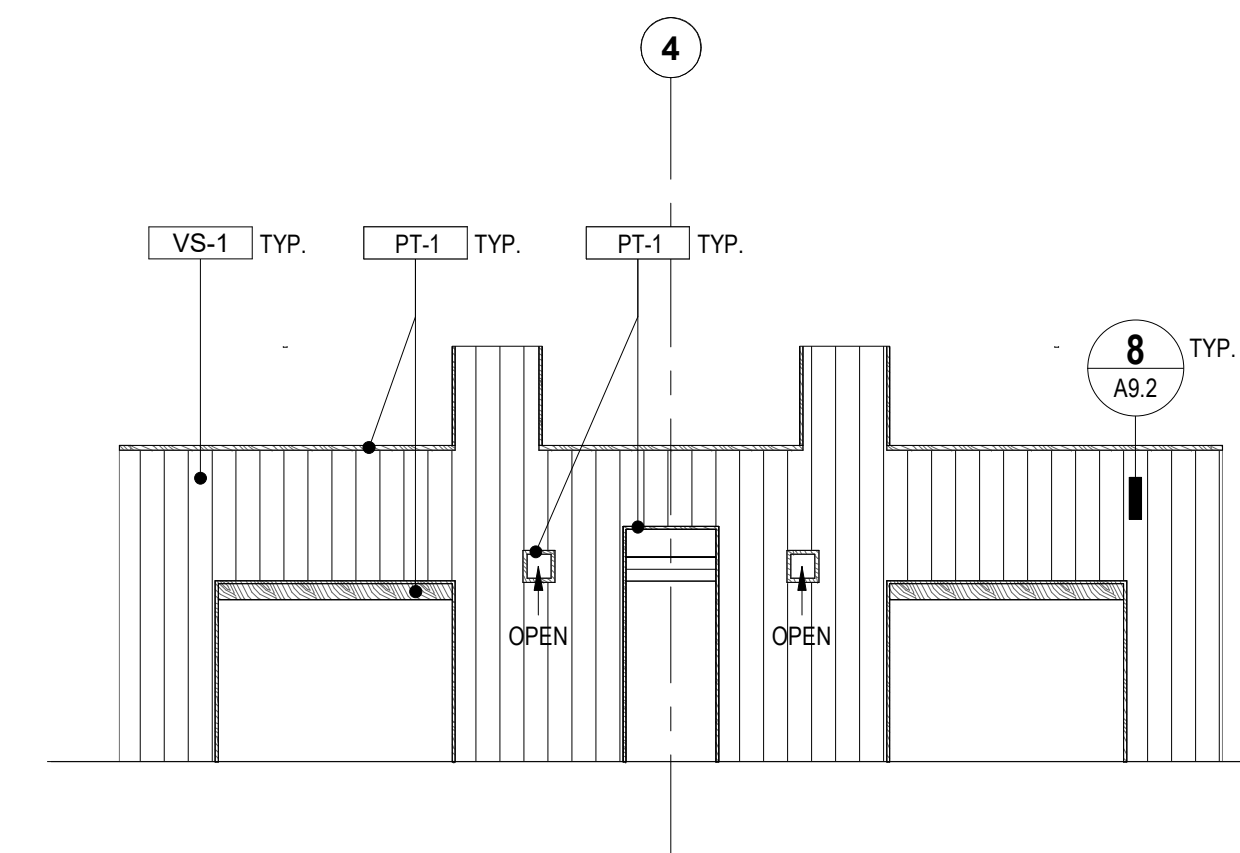
5 BUILDING A - ELEVATION NORTH (TYP)
1/8" = 1'-0"

NOTE: FIELD VERIFY ALL DIMENSIONS.
DO NOT SCALE DRAWINGS.
NOTE: REFERENCE A1.1-1 FOR GUTTER LOCATIONS



13 BUILDING A - ELEVATION SOUTH (TYP)
1/8" = 1'-0"

NOTE: FIELD VERIFY ALL DIMENSIONS.
DO NOT SCALE DRAWINGS.
NOTE: REFERENCE A1.1-1 FOR GUTTER LOCATIONS



15 BUILDING A - ELEVATION BACKSIDE ENTRY WALL (TYP)
1/8" = 1'-0"

MATERIAL LEGEND

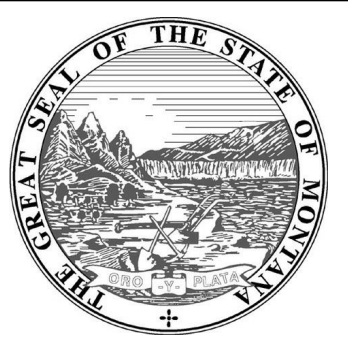
- LS-1**
HARDIE PLANK LAP SIDING
TEXTURE: SELECT CEDARMILL
COLOR: WEATHERED CLIFFS
WIDTH: 7.25"
- VS-1**
HARDIE PANEL VERTICAL SIDING
TEXTURE: SELECT CEDARMILL
COLOR: ARCTIC WHITE
WIDTH: 48"
- SP-1**
HARDIE SOFFIT PANEL
TEXTURE: VENTED SMOOTH
COLOR: WEATHERED CLIFFS
WIDTH: 16"
- TB-1**
HARDIE TRIM BOARD
TEXTURE: 5/4 RUSTIC
COLOR: COBBLE STONE
WIDTH: 11.25"
- PT-1**
SHERWIN-WILLIAMS
TEXTURE: DURATION EXTERIOR
COLOR: SW 9695 (BETROOT)

GENERAL NOTES

1. WINDOWS ON BUILDINGS 104 & 109 ELEVATION NORTH ARE NOT TYPICAL. USE WINDOW TYPE 'C' AS ALTERNATE (REF. SCHEDULE).

ELEVATION NOTES

1. ALL INFORMATION REGARDING EXISTING CONDITIONS IS BASED UPON OWNER-SUPPLIED DOCUMENTS AND MAY NOT PRECISELY REFLECT FIELD CONDITIONS.
2. THE CONTRACTOR SHALL NOT CONSIDER CONSTRUCTION NOTES TO BE ALL-INCLUSIVE. IT IS THE CONTRACTOR'S RESPONSIBILITY TO INSPECT AND ASSESS EACH AREA AND TO FULFILL THE INTENT OF THE CONTRACT DOCUMENTS. CONTRACTOR SHALL COORDINATE ARCHITECTURAL CONSTRUCTION DRAWING AND NOTES WITH CIVIL, STRUCTURAL AND MECHANICAL, ELECTRICAL & PLUMBING NOTES AND DRAWINGS.
3. FIELD VERIFY ALL DIMENSIONS. DO NOT SCALE DRAWINGS.
4. ALL FINISHES AND MATERIALS SHALL BE PROPERLY INTEGRATED TO ENSURE A UNIFORM APPEARANCE AND SEAMLESS TRANSITION.
5. ALL DIMENSIONS ARE FROM STRUCTURAL OR UNFINISHED FACE OF STUD, UNLESS OTHERWISE NOTED.
6. GENERAL CONTRACTOR SHALL COORDINATE ALL ASPECTS OF THE BUILDING CONSTRUCTION.
7. PATCH AND REPAIR ANY / ALL WALL SURFACES AS REQUIRED TO PROVIDE SUITABLE SUBSTRATE FOR FINISHES.
8. U/L ASSEMBLIES DESCRIBED ARE FOR REFERENCE ONLY. THE GENERAL CONTRACTOR SHALL COORDINATE AND VERIFY THE INSTALLATION OF THE DESCRIBED SYSTEM(S).



MSU-CPDC
MONTANA STATE UNIVERSITY
BOZEMAN, MONTANA
PHONE: 406.994.5413
FAX: 406.994.5665

MSU PAISLEY COURT HOUSING

BID/PERMIT SET



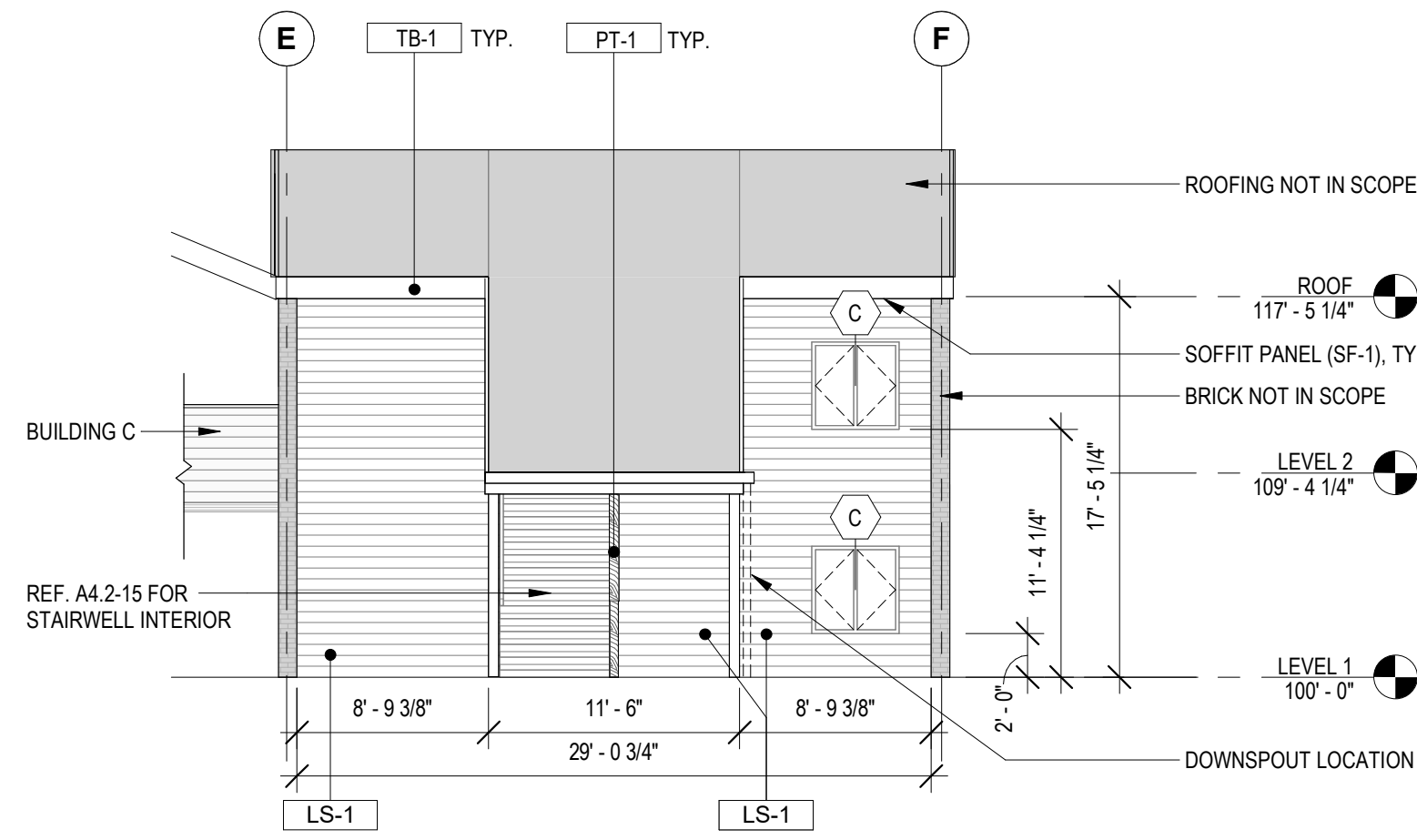
DRAWN BY:	Author	
REVIEWED BY:	Checker	
REV.	DESCRIPTION	DATE
2	Addendum #2	01/02/25

PPA #: 21-0143
A/E #: 21-0143
A&E PROJ #: 23123.00

SHEET TITLE
EXTERIOR ELEVATIONS

SHEET
A4.1

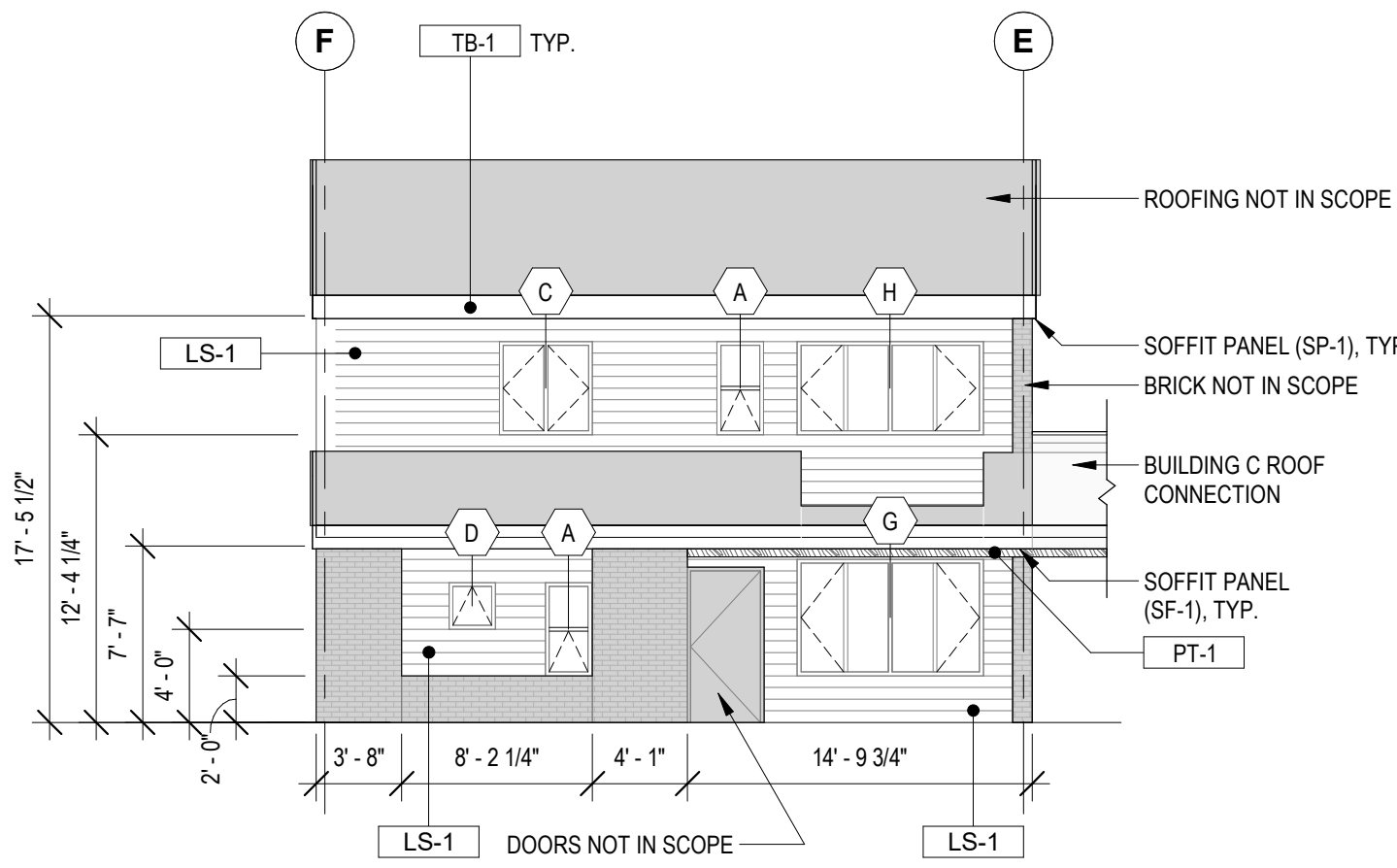
DATE
03/29/24



1 BUILDING B - ELEVATION EAST (TYP)

1/8" = 1'-0"

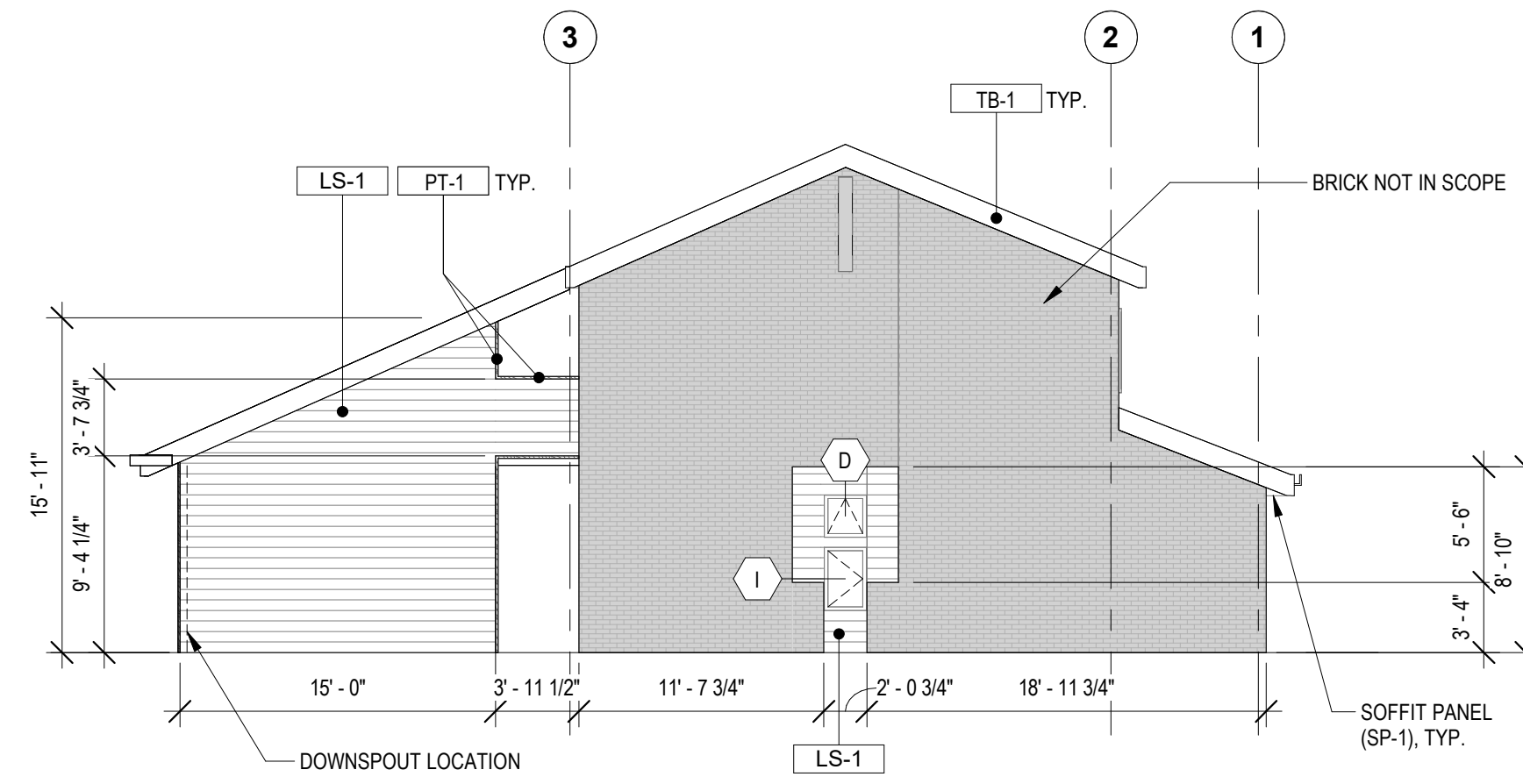
NOTE: FIELD VERIFY ALL DIMENSIONS. DO NOT SCALE DRAWINGS.
 NOTE: 101 BUILDING 'B' & 102 BUILDING 'B' ARE MIRRORED VERSIONS OF TYPICAL BUILDING.



2 BUILDING B - ELEVATION WEST (TYP)

1/8" = 1'-0"

NOTE: FIELD VERIFY ALL DIMENSIONS. DO NOT SCALE DRAWINGS.
 NOTE: 101 BUILDING 'B' & 102 BUILDING 'B' ARE MIRRORED VERSIONS OF TYPICAL BUILDING.



3 BUILDING B - ELEVATION NORTH (TYP)

1/8" = 1'-0"

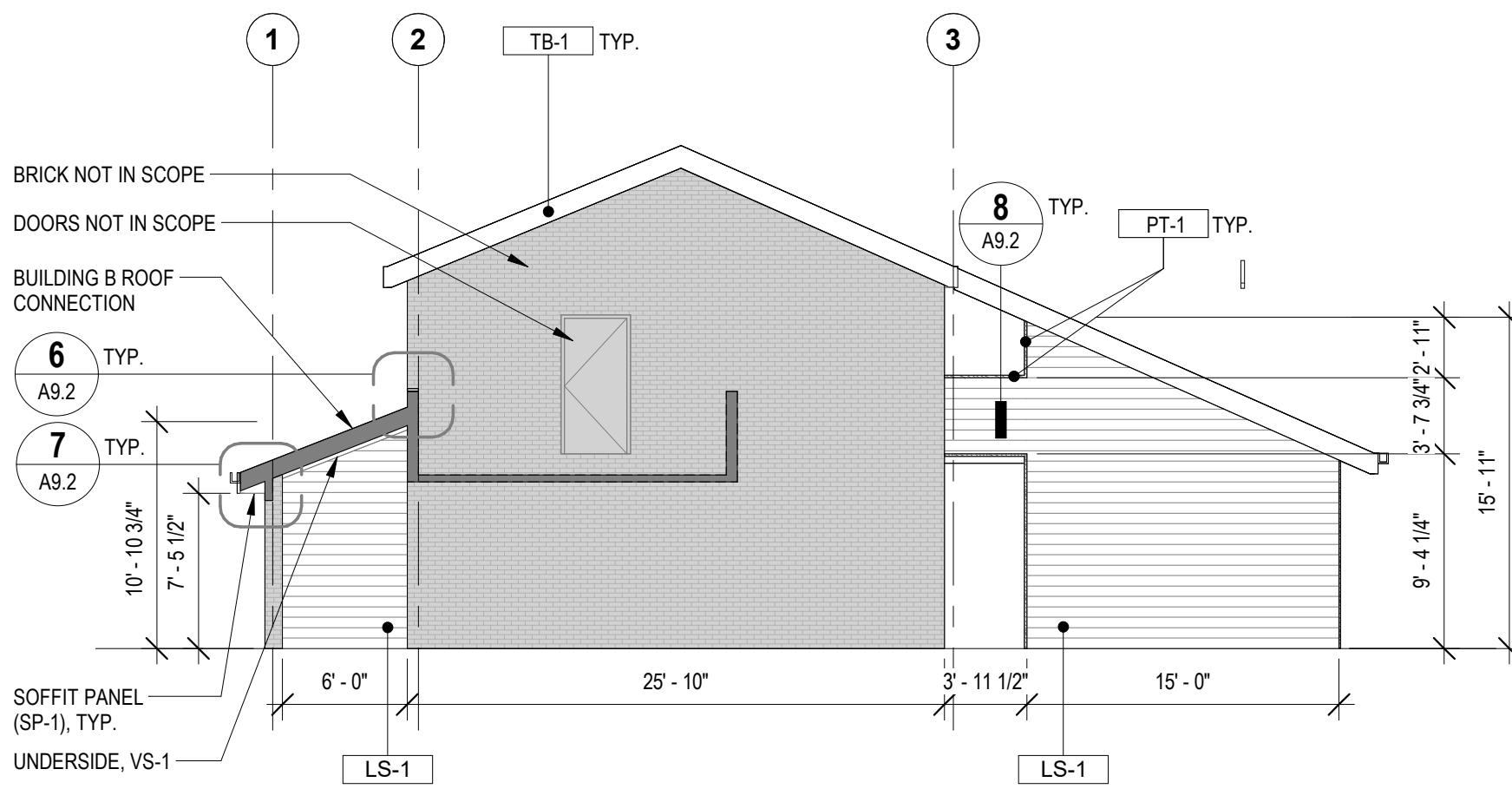
NOTE: FIELD VERIFY ALL DIMENSIONS. DO NOT SCALE DRAWINGS.
 NOTE: 101 BUILDING 'B' & 102 BUILDING 'B' ARE MIRRORED VERSIONS OF TYPICAL BUILDING.
 NOTE: REFERENCE A1.1-1 FOR GUTTER LOCATIONS

GENERAL NOTES

- LS-1
HARDIE PLANK LAP SIDING
TEXTURE: SELECT CEDARMILL
COLOR: WEATHERED CLIFFS
WIDTH: 7.25"
- VS-1
HARDIE PANEL VERTICAL SIDING
TEXTURE: SELECT CEDARMILL
COLOR: ARCTIC WHITE
WIDTH: 48"
- SP-1
HARDIE SOFFIT PANEL
TEXTURE: VENTED SMOOTH
COLOR: WEATHERED CLIFFS
WIDTH: 16"
- TB-1
HARDIE TRIM BOARD
TEXTURE: 5/4 RUSTIC
COLOR: COBBLE STONE
WIDTH: 11.25"
- PT-1
SHERWIN-WILLIAMS
TEXTURE: DURATION EXTERIOR
COLOR: SW 9695 (BEETROOT)

GENERAL NOTES

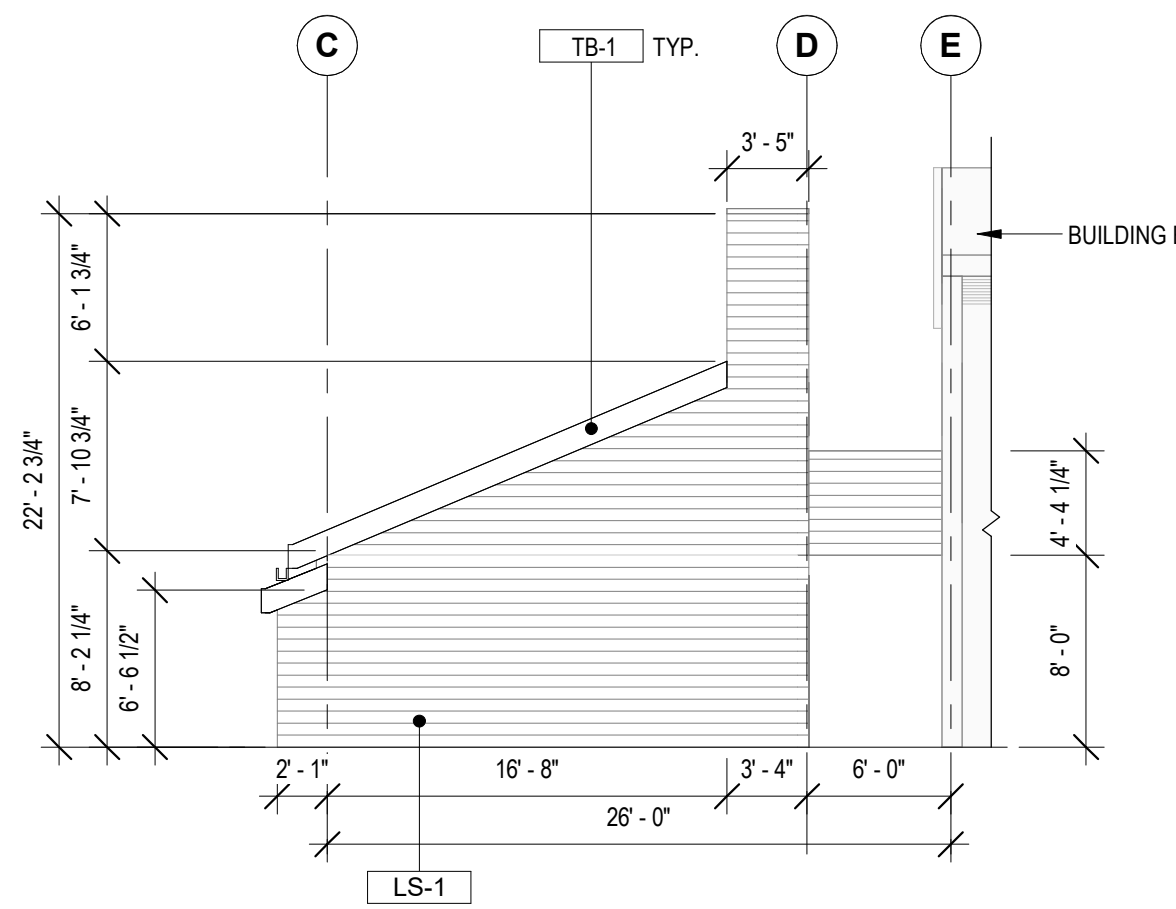
1. 101 BUILDING 'B/C' & 102 BUILDING 'B/C' ARE MIRRORED VERSIONS OF TYPICAL BUILDING.



5 BUILDING B - ELEVATION SOUTH (TYP)

1/8" = 1'-0"

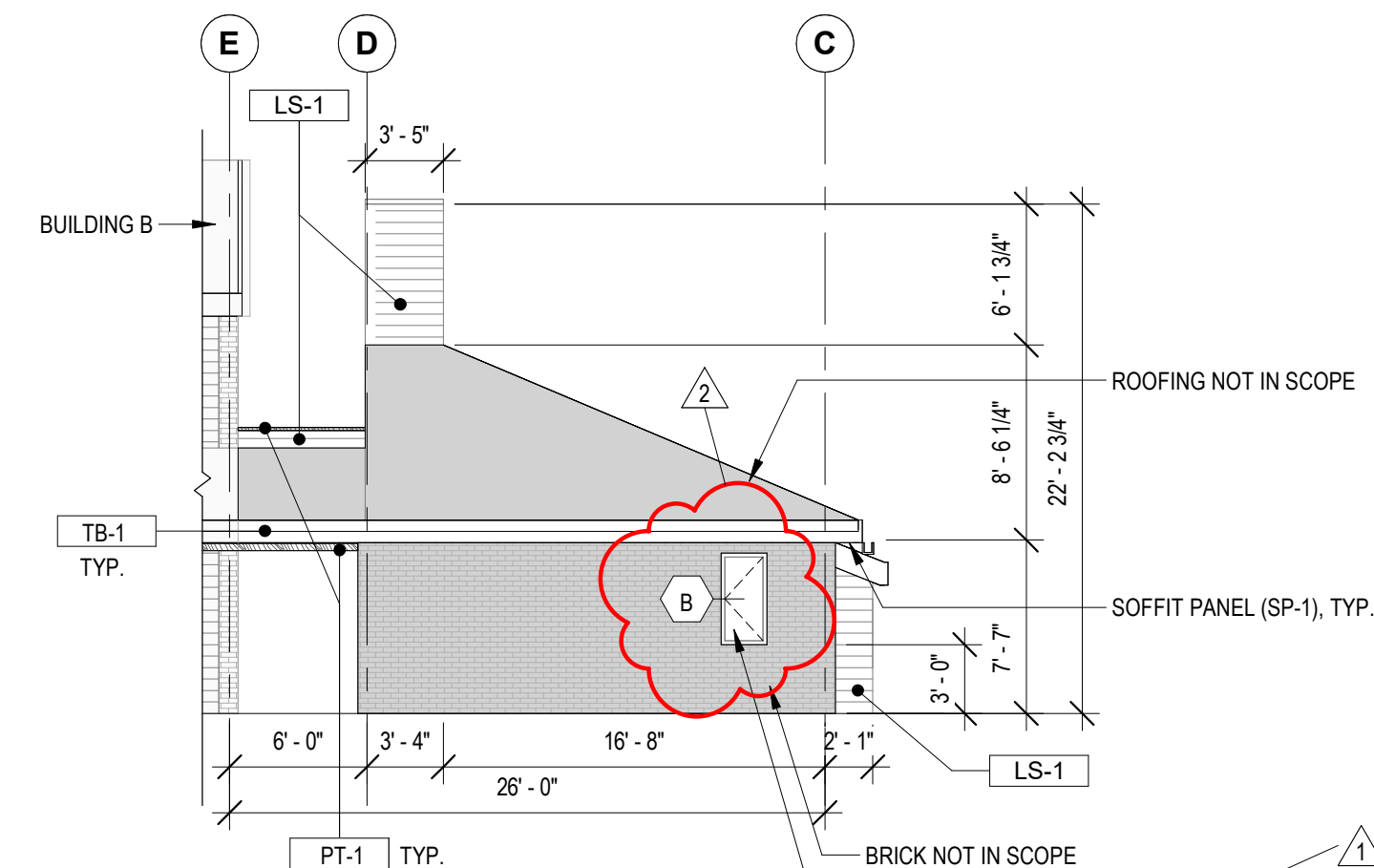
NOTE: FIELD VERIFY ALL DIMENSIONS. DO NOT SCALE DRAWINGS.
 NOTE: 101 BUILDING 'B' & 102 BUILDING 'B' ARE MIRRORED VERSIONS OF TYPICAL BUILDING.
 NOTE: REFERENCE A1.1-1 FOR GUTTER LOCATIONS



6 BUILDING C - ELEVATION EAST (TYP)

1/8" = 1'-0"

NOTE: FIELD VERIFY ALL DIMENSIONS. DO NOT SCALE DRAWINGS.
 NOTE: 101 BUILDING 'C' & 102 BUILDING 'C' ARE MIRRORED VERSIONS OF TYPICAL BUILDING.



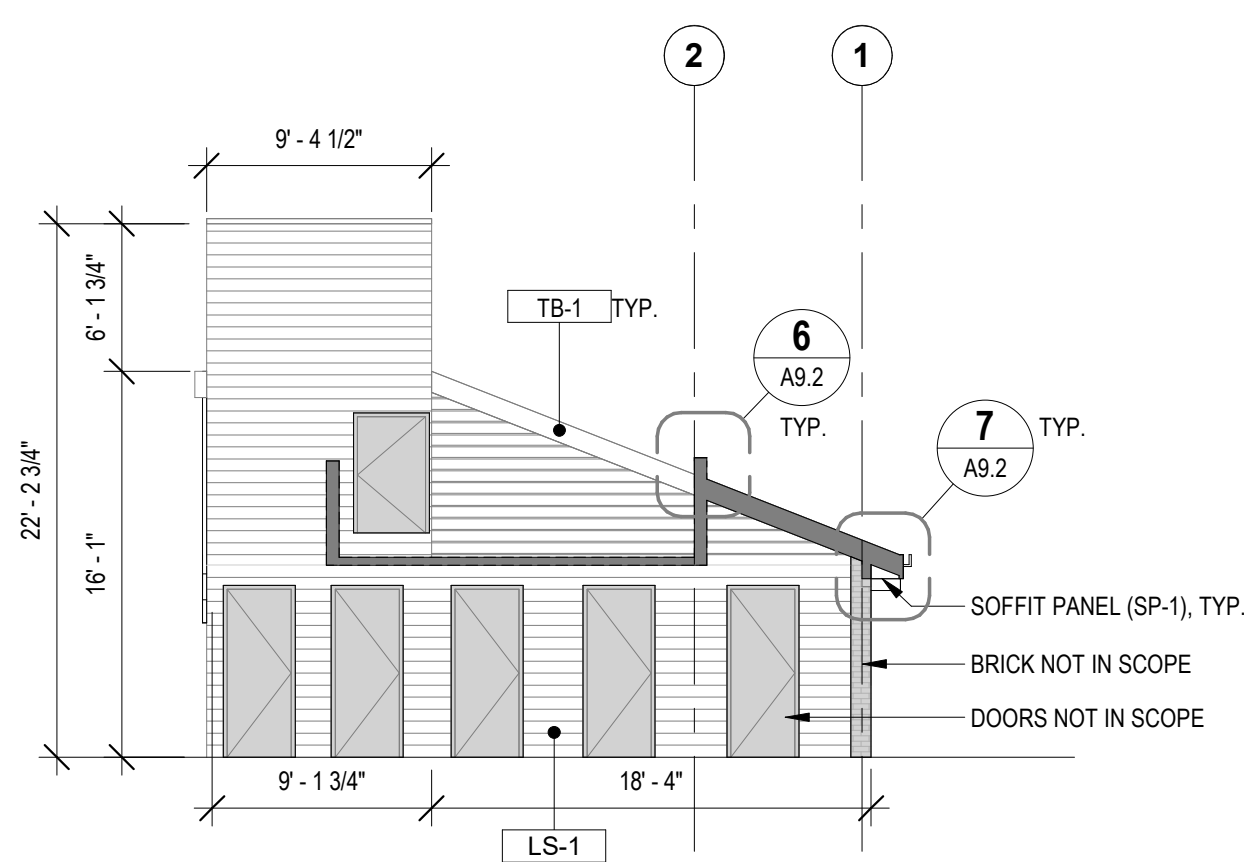
7 BUILDING C - ELEVATION WEST (TYP)

1/8" = 1'-0"

NOTE: FIELD VERIFY ALL DIMENSIONS. DO NOT SCALE DRAWINGS.
 NOTE: 101 BUILDING 'C' & 102 BUILDING 'C' ARE MIRRORED VERSIONS OF TYPICAL BUILDING.

ELEVATION NOTES

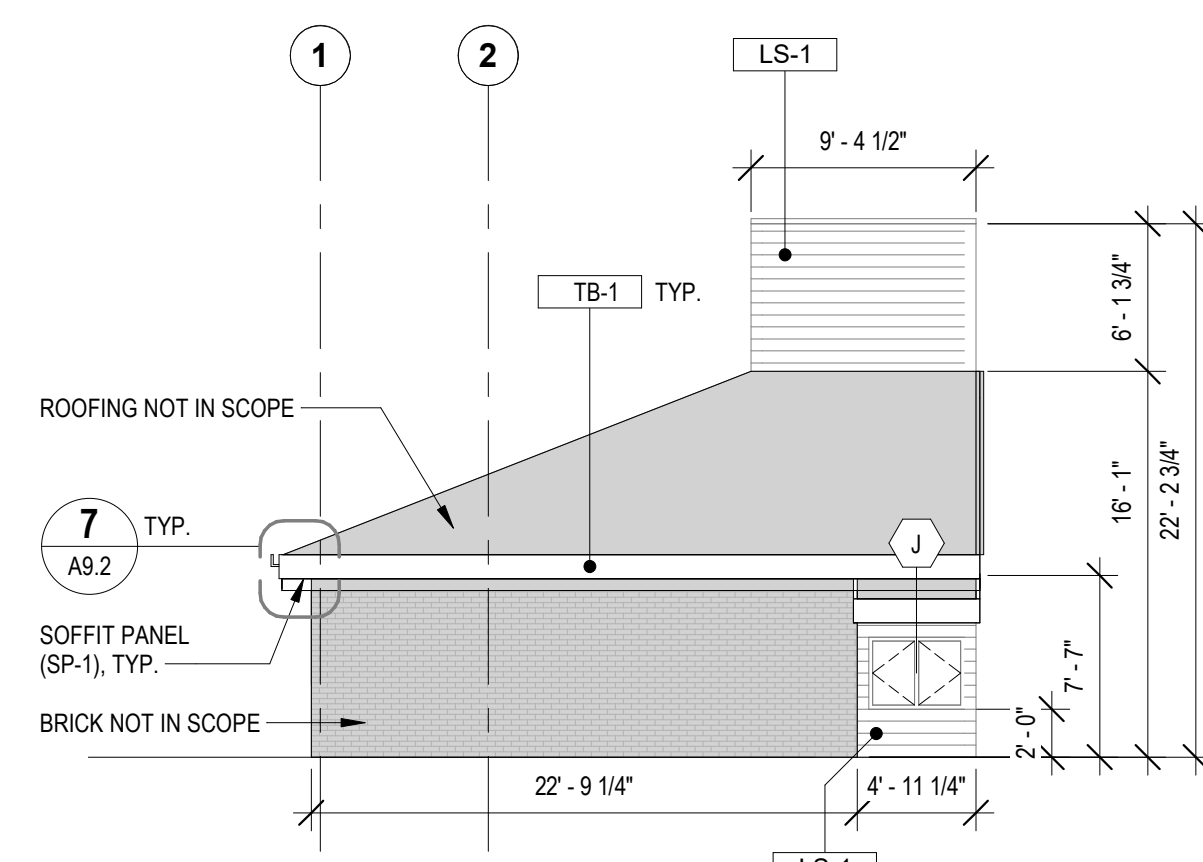
1. ALL INFORMATION REGARDING EXISTING CONDITIONS IS BASED UPON OWNER-SUPPLIED DOCUMENTS AND MAY NOT PRECISELY REFLECT FIELD CONDITIONS.
2. THE CONTRACTOR SHALL NOT CONSIDER CONSTRUCTION NOTES TO BE ALL-INCLUSIVE. IT IS THE CONTRACTOR'S RESPONSIBILITY TO INSPECT AND ASSESS EACH AREA AND TO FULFILL THE INTENT OF THE CONTRACT DOCUMENTS. CONTRACTOR SHALL COORDINATE ARCHITECTURAL CONSTRUCTION DRAWING AND NOTES WITH CIVIL, STRUCTURAL AND MECHANICAL, ELECTRICAL & PLUMBING NOTES AND DRAWINGS.
3. FIELD VERIFY ALL DIMENSIONS. DO NOT SCALE DRAWINGS.
4. ALL FINISHES AND MATERIALS SHALL BE PROPERLY INTEGRATED TO ENSURE A UNIFORM APPEARANCE AND SEAMLESS TRANSITION.
5. ALL DIMENSIONS ARE FROM STRUCTURAL OR UNFINISHED FACE OF STUD, UNLESS OTHERWISE NOTED.
6. GENERAL CONTRACTOR SHALL COORDINATE ALL ASPECTS OF THE BUILDING CONSTRUCTION.
7. PATCH AND REPAIR ANY / ALL WALL SURFACES AS REQUIRED TO PROVIDE SUITABLE SUBSTRATE FOR FINISHES.
8. U.L. ASSEMBLIES DESCRIBED ARE FOR REFERENCE ONLY. THE GENERAL CONTRACTOR SHALL COORDINATE AND VERIFY THE INSTALLATION OF THE DESCRIBED SYSTEM(S).



13 BUILDING C - ELEVATION NORTH (TYP)

1/8" = 1'-0"

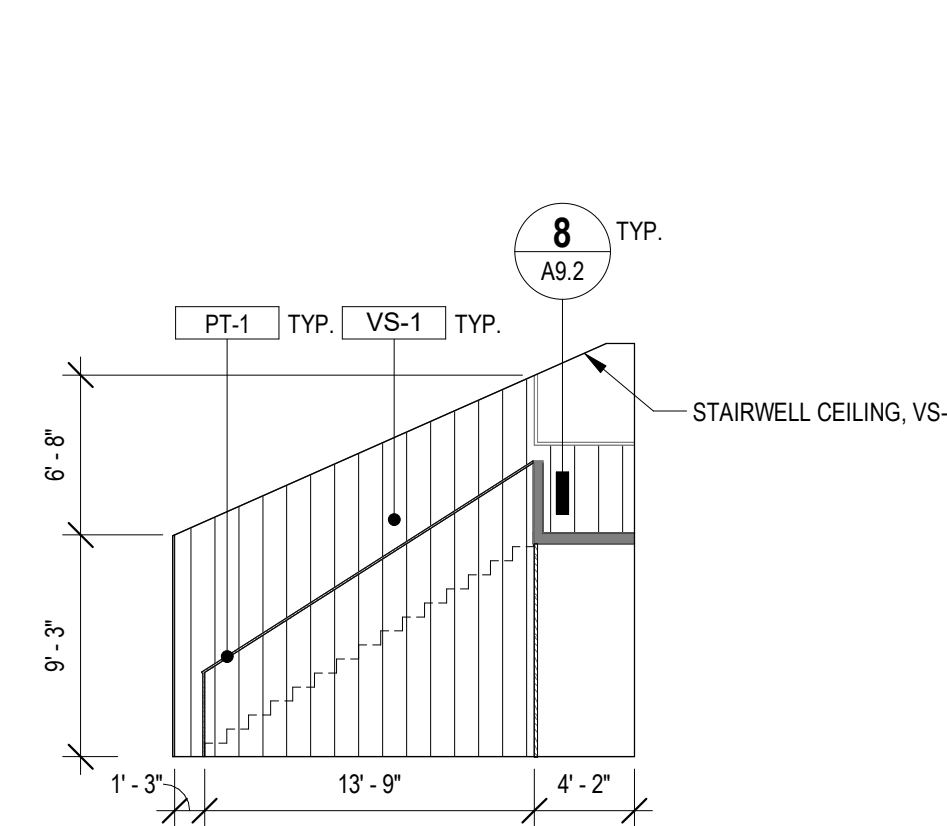
NOTE: FIELD VERIFY ALL DIMENSIONS. DO NOT SCALE DRAWINGS.
 NOTE: 101 BUILDING 'C' & 102 BUILDING 'C' ARE MIRRORED VERSIONS OF TYPICAL BUILDING.



14 BUILDING C - ELEVATION SOUTH (TYP)

1/8" = 1'-0"

NOTE: FIELD VERIFY ALL DIMENSIONS. DO NOT SCALE DRAWINGS.
 NOTE: 101 BUILDING 'C' & 102 BUILDING 'C' ARE MIRRORED VERSIONS OF TYPICAL BUILDING.



15 BUILDING B - ELEVATION STAIRWELL INTERIOR (TYP)

1/8" = 1'-0"

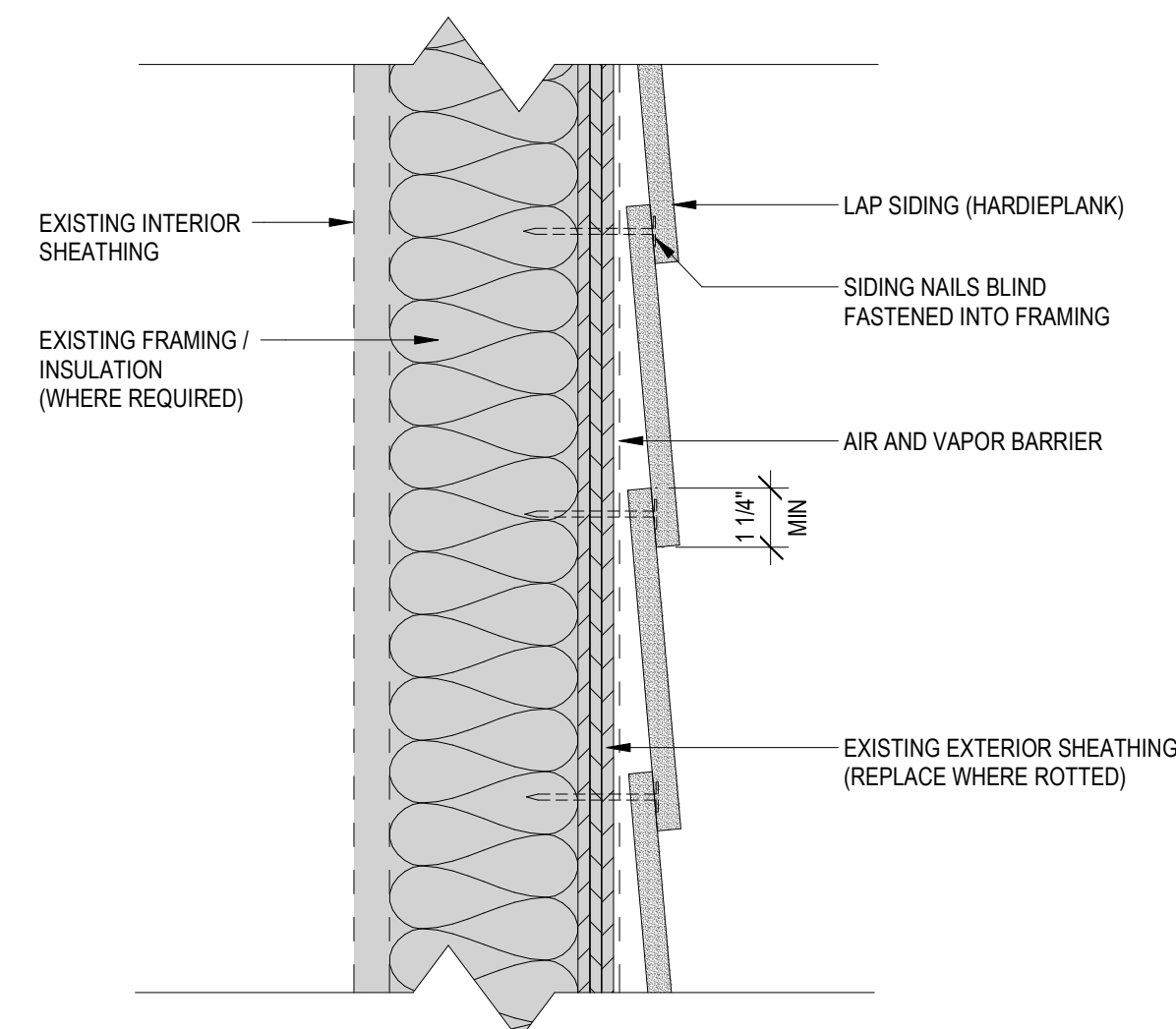
NOTE: FIELD VERIFY ALL DIMENSIONS. DO NOT SCALE DRAWINGS.
 NOTE: 101 BUILDING 'B' & 102 BUILDING 'B' ARE MIRRORED VERSIONS OF TYPICAL BUILDING.

DRAWN BY:	Author	
REVIEWED BY:	Checker	
REV.	DESCRIPTION	DATE
2	Addendum #2	01/02/25

PPA #:	21-0143
A/E #	21-0143
A&E PROJ #:	23123.00

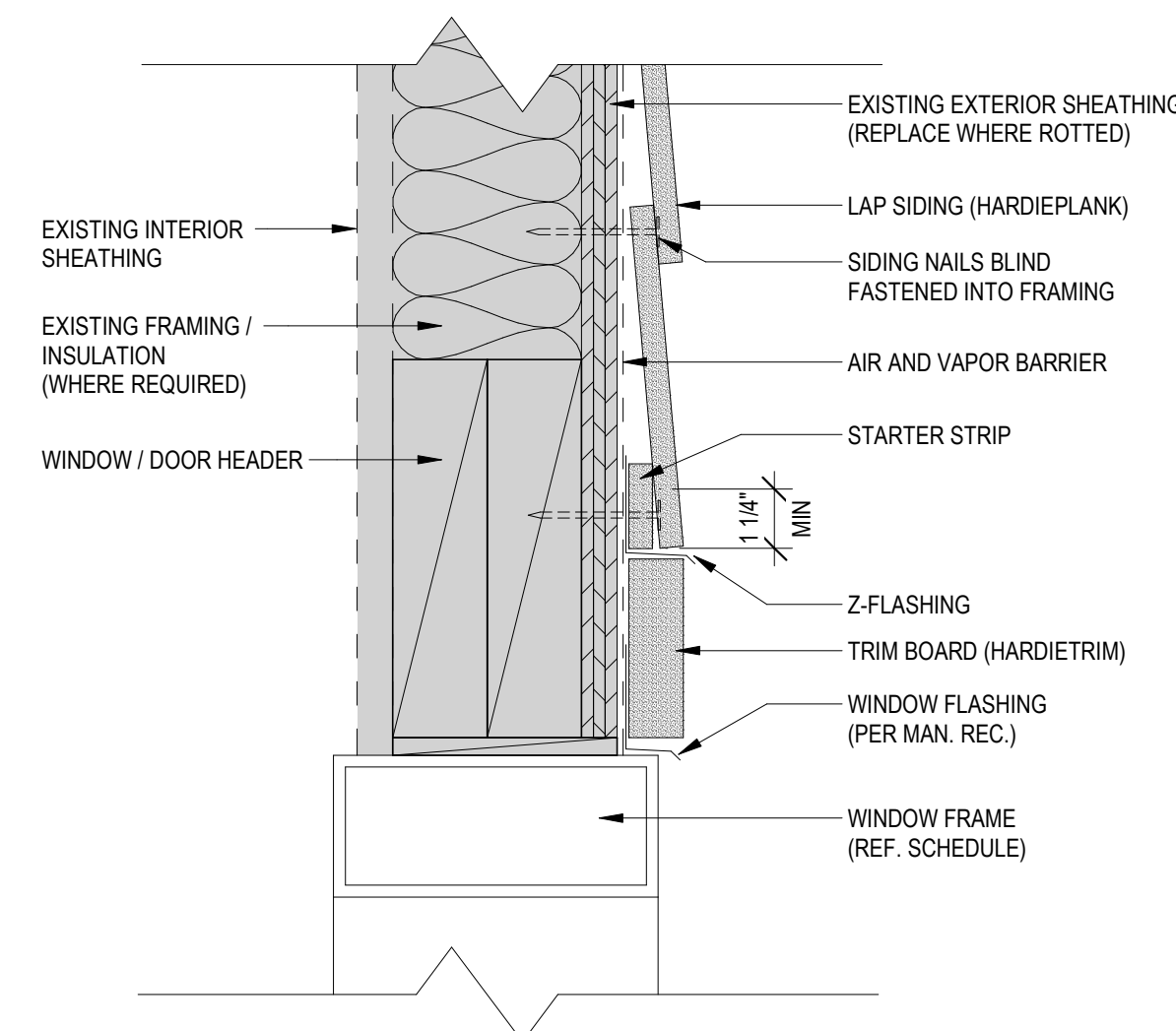
SHEET TITLE
 EXTERIOR ELEVATIONS
 SHEET
A4.2

DATE
03/29/24



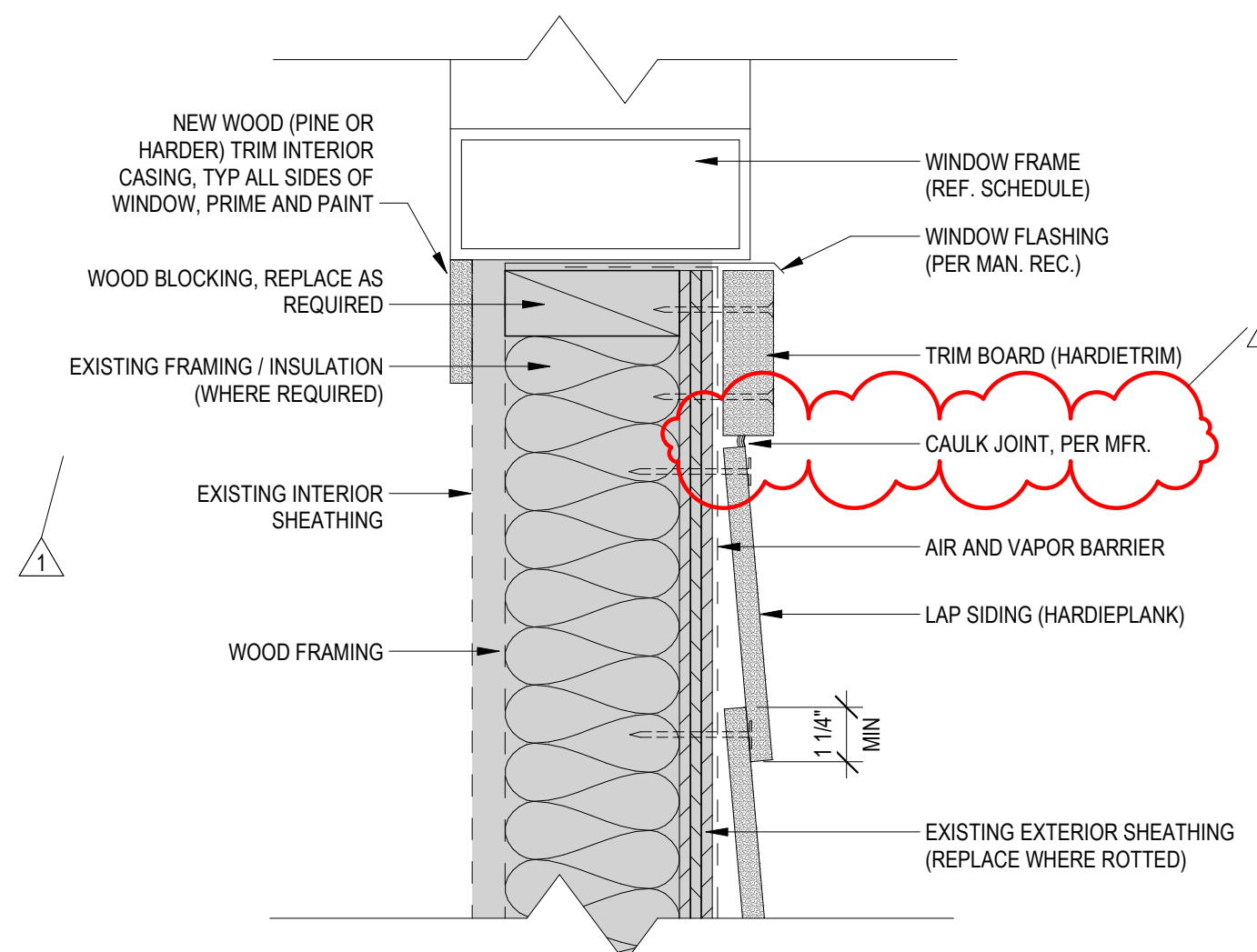
REFERENCE MANUFACTURER REQUIREMENT :
HARDIPLANK PLANK DETAIL 1.05

1 LAP SIDING HORIZONTAL DETAIL (TYP)
3" = 1'-0"



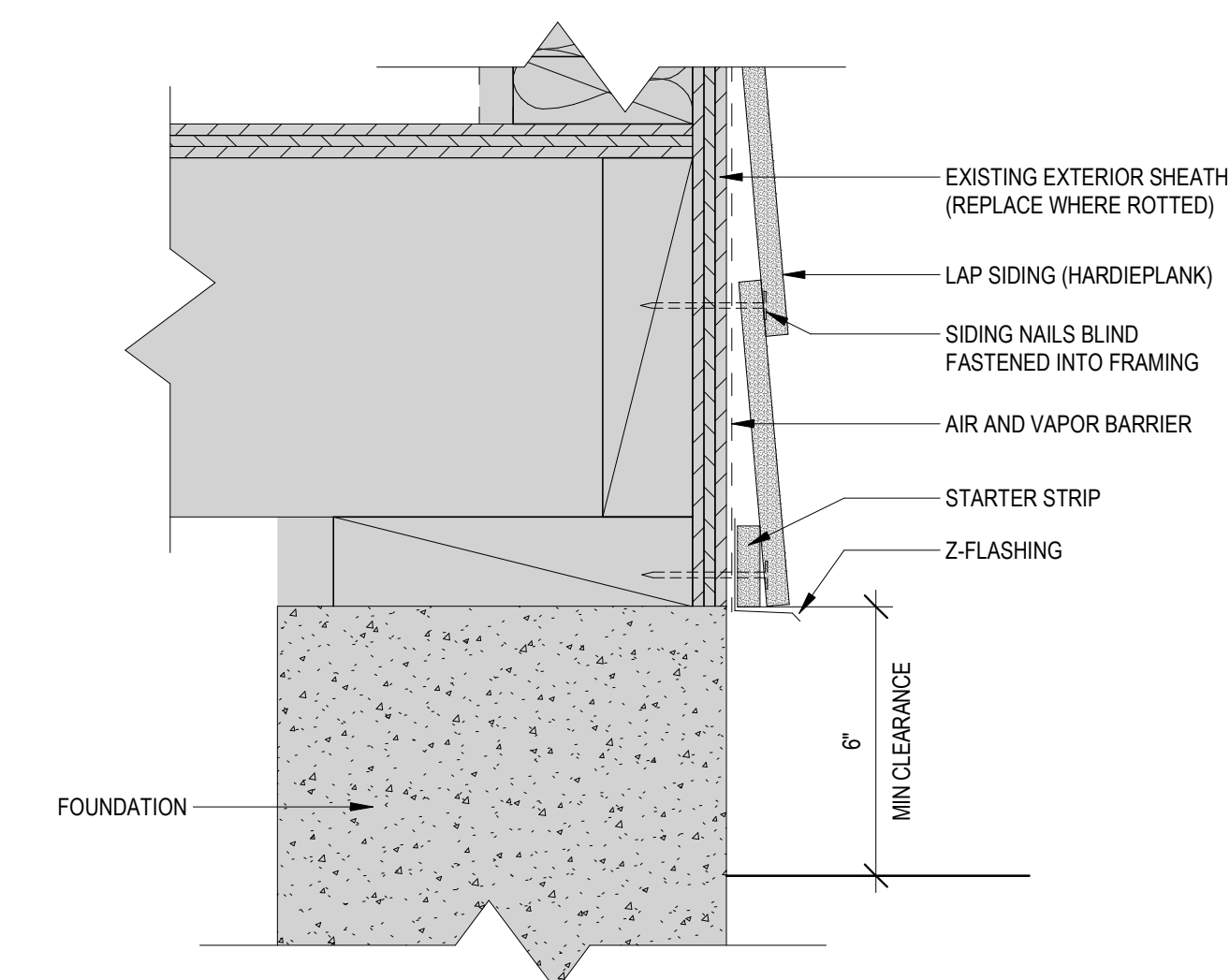
REFERENCE MANUFACTURER REQUIREMENT :
HARDIPLANK PLANK DETAIL 1.03

2 LAP SIDING HEADER DETAIL (TYP)
3" = 1'-0"



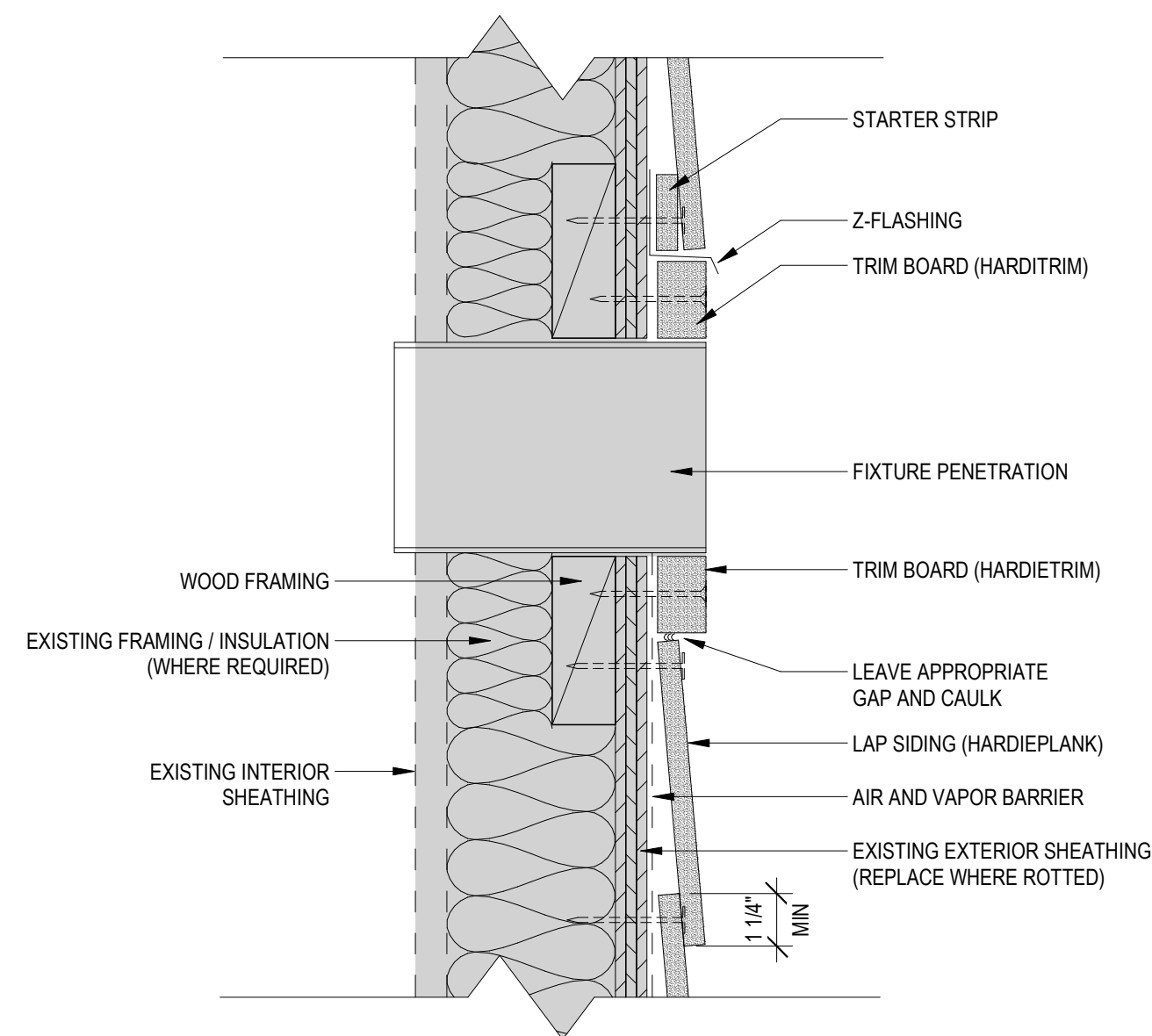
REFERENCE MANUFACTURER REQUIREMENT :
HARDIPLANK PLANK DETAIL 1.04

3 LAP SIDING SILL DETAIL (TYP)
3" = 1'-0"



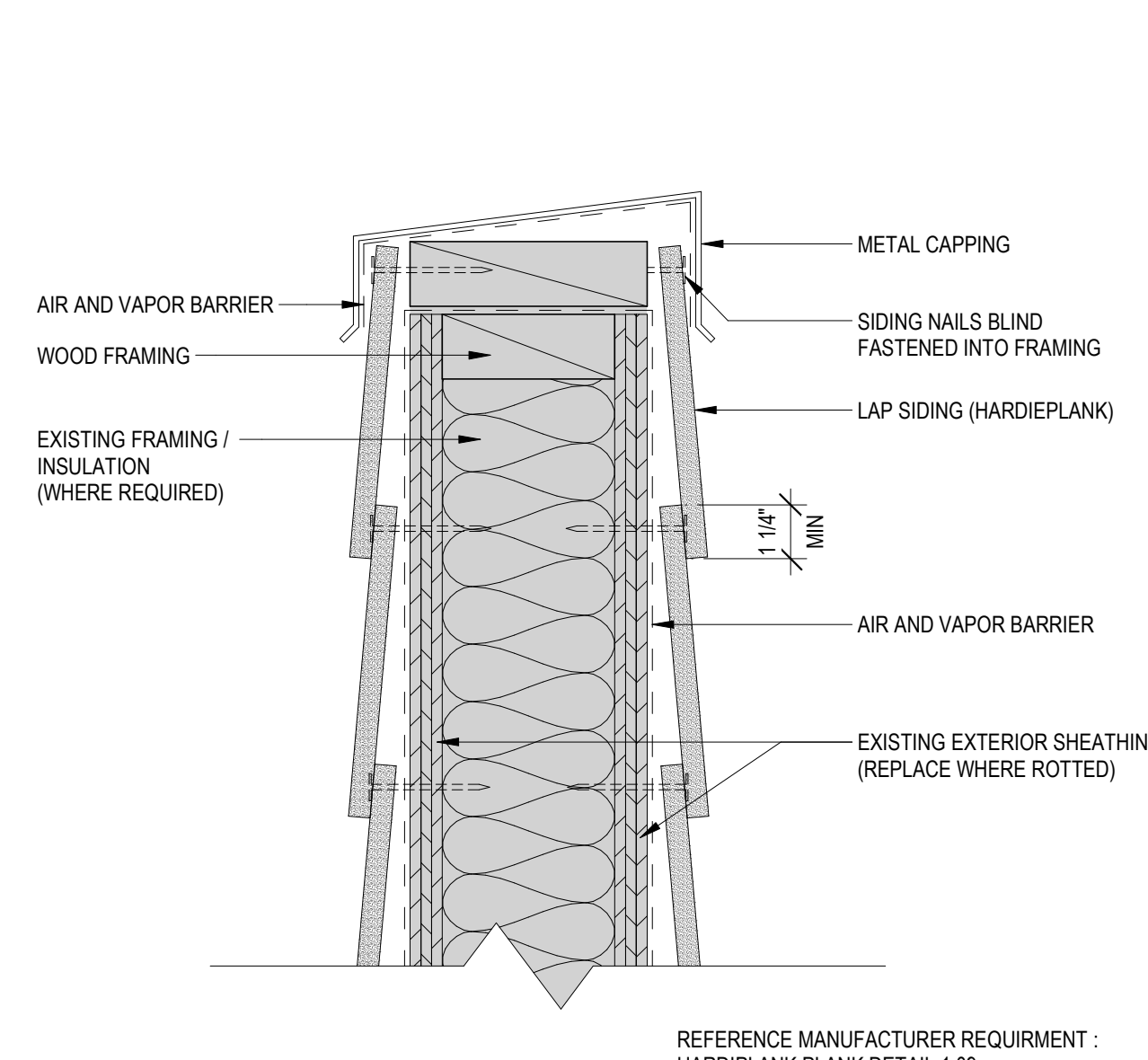
REFERENCE MANUFACTURER REQUIREMENT :
HARDIPLANK PLANK DETAIL 1.06

4 LAP SIDING GRADE DETAIL (TYP)
3" = 1'-0"



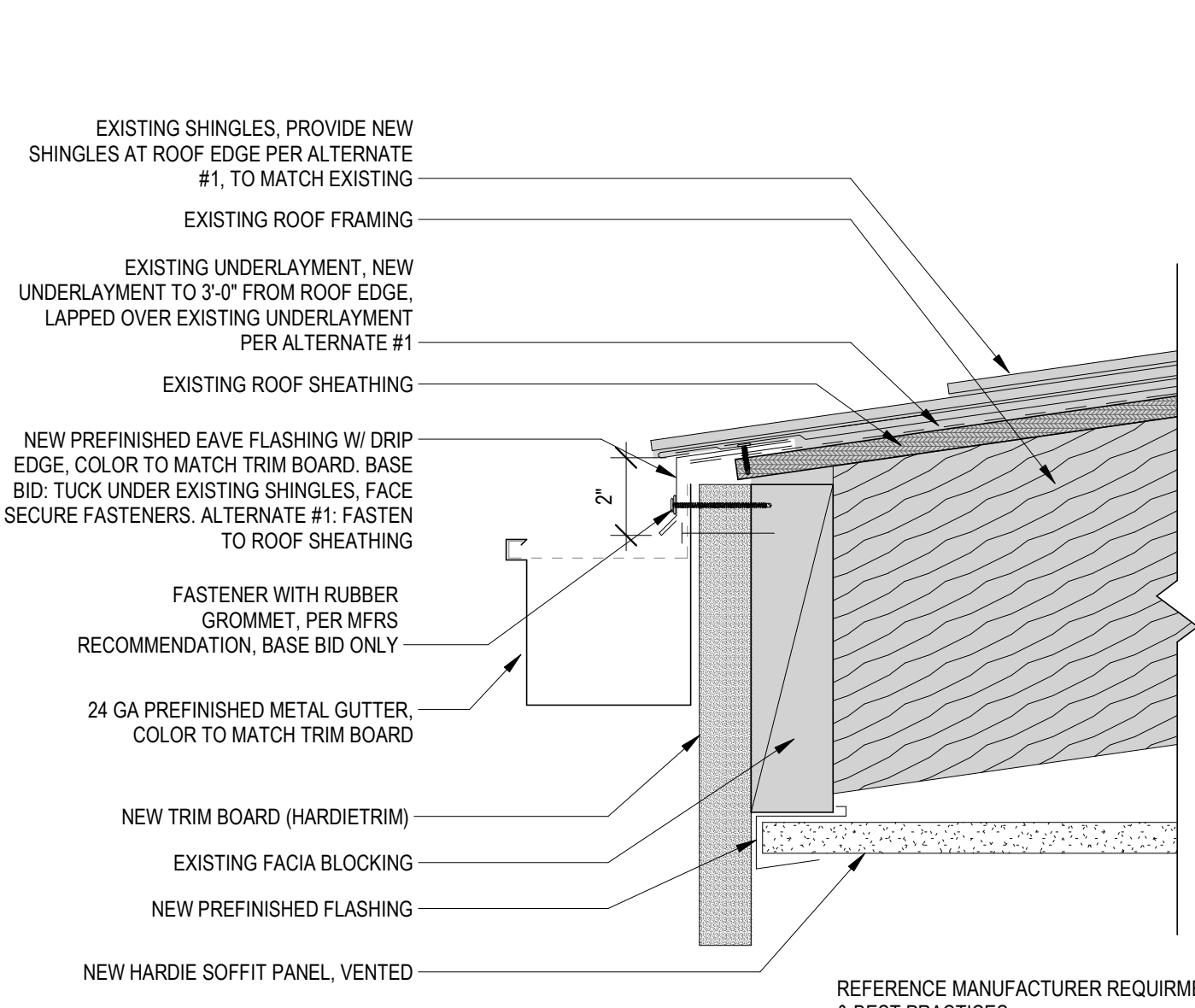
REFERENCE MANUFACTURER REQUIREMENT :
HARDIPLANK PANEL DETAIL 1.07

5 LAP SIDING FIXTURE PENETRATION
3" = 1'-0"



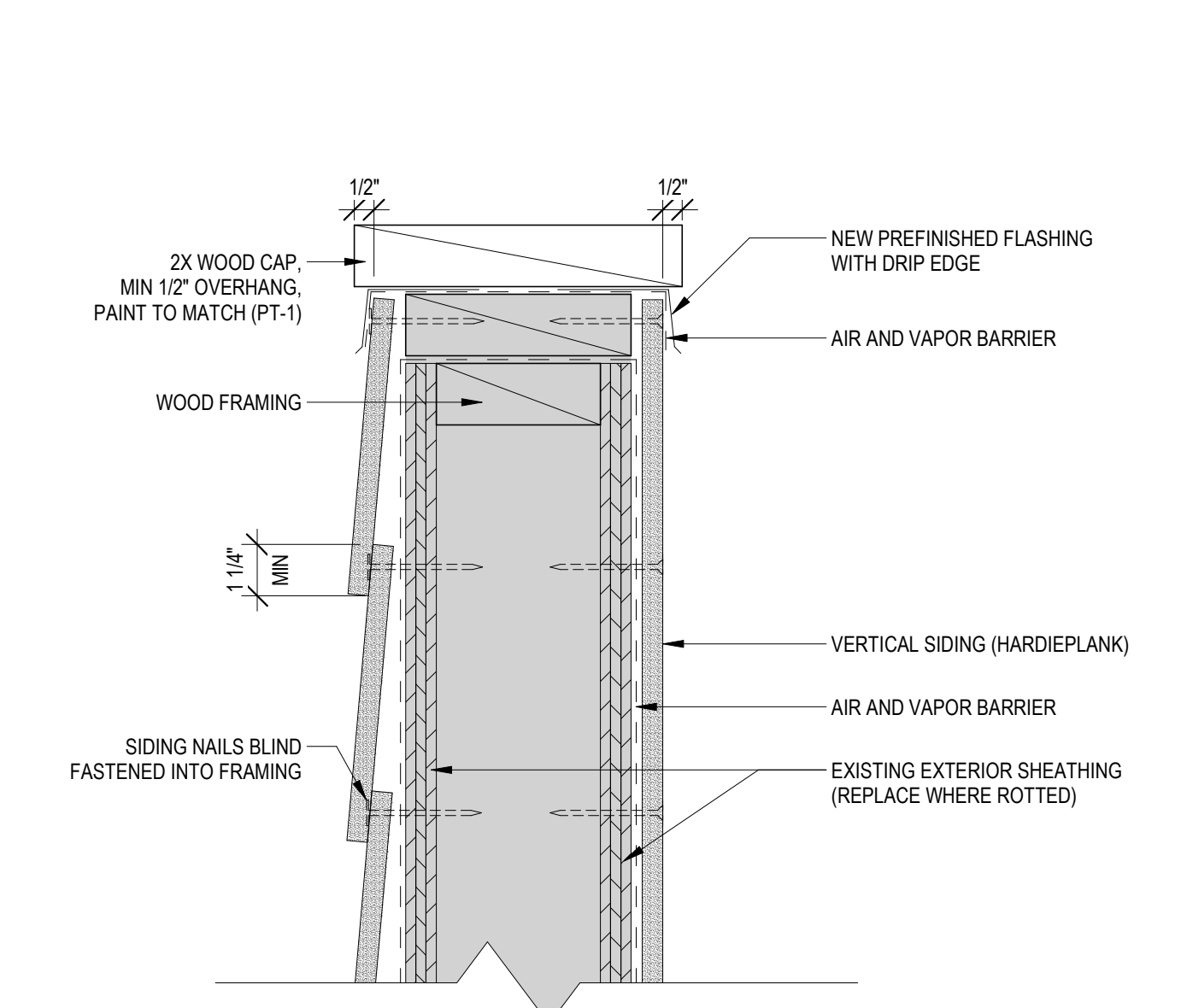
REFERENCE MANUFACTURER REQUIREMENT :
HARDIPLANK PLANK DETAIL 1.09

6 LAP SIDING PARAPET DETAIL
3" = 1'-0"



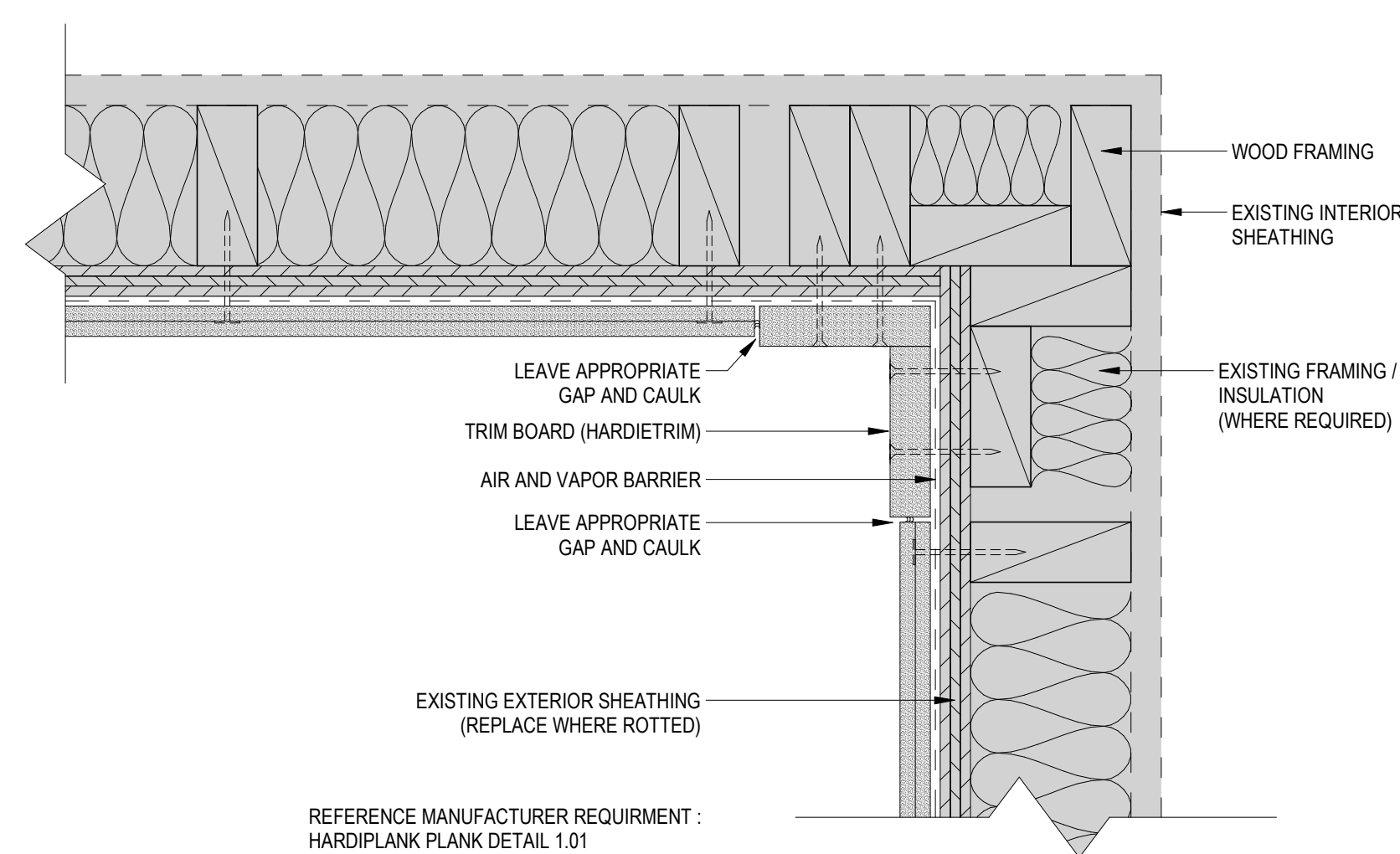
REFERENCE MANUFACTURER REQUIREMENT & BEST PRACTICES

7 EAVE DETAIL (TYP)
3" = 1'-0"



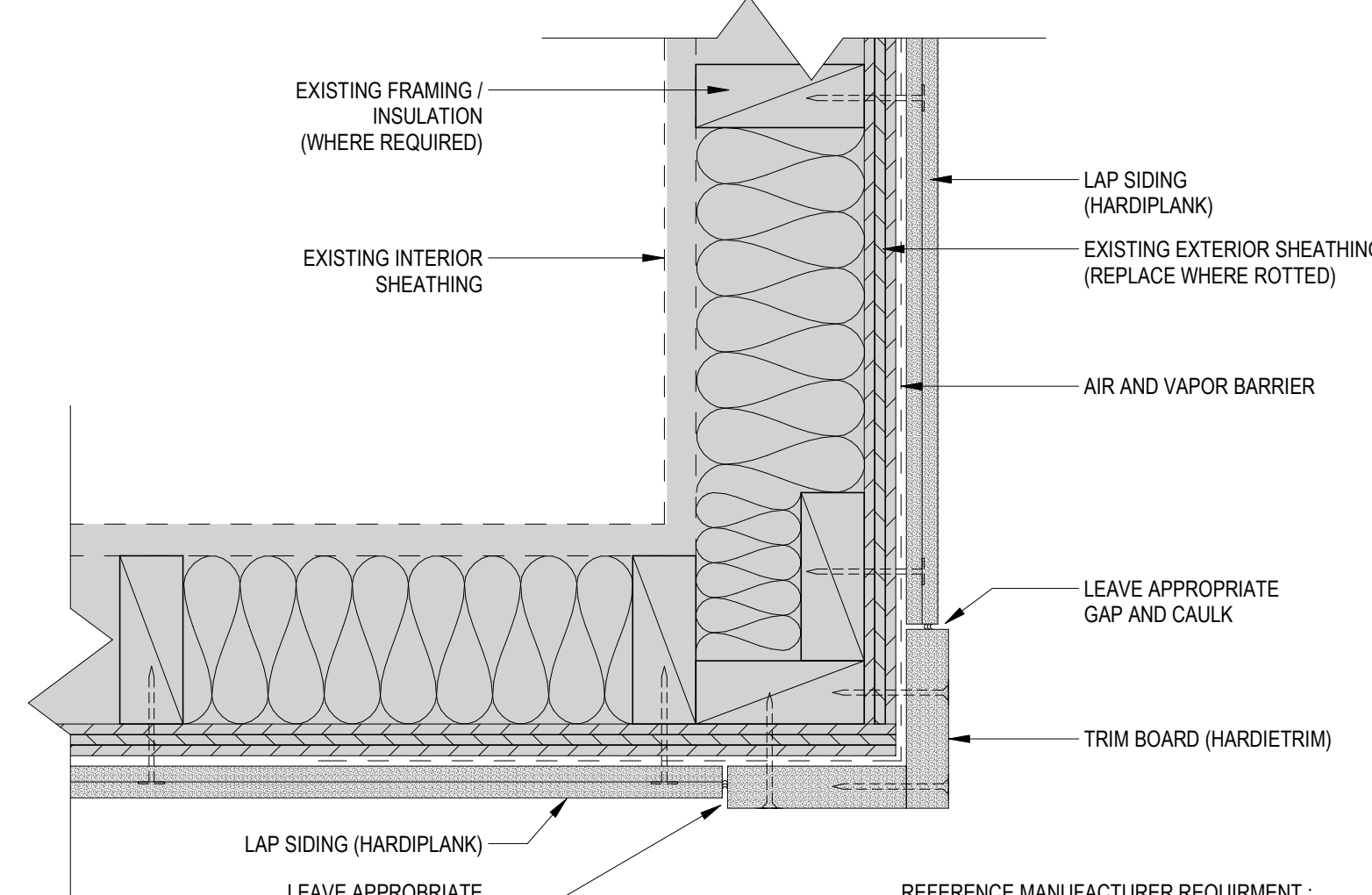
REFERENCE MANUFACTURER REQUIREMENT :
HARDIPLANK PLANK DETAIL 1.10

8 LAP SIDING RAILING DETAIL (TYP)
3" = 1'-0"



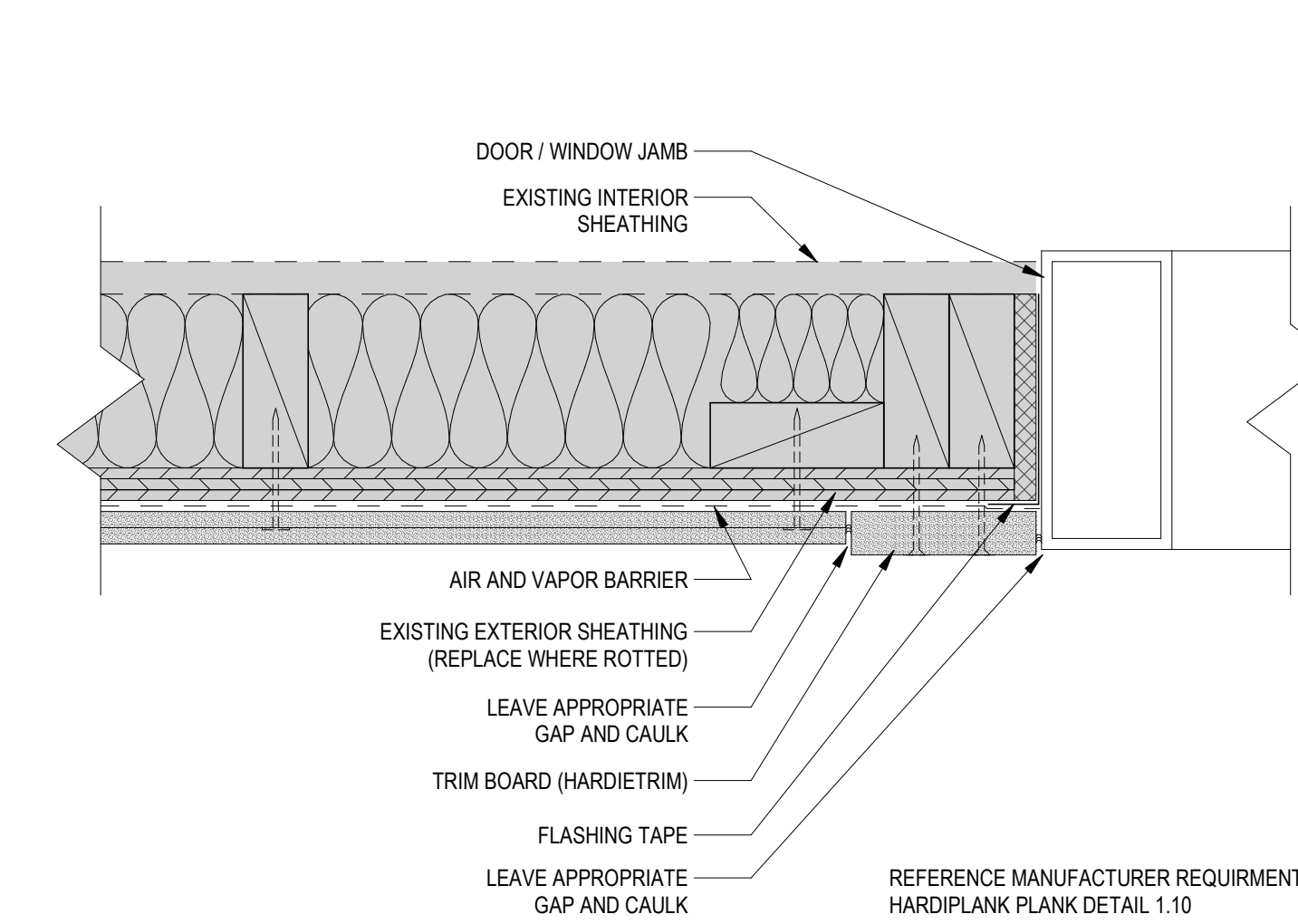
REFERENCE MANUFACTURER REQUIREMENT :
HARDIPLANK PLANK DETAIL 1.01

13 LAP SIDING INSIDE CORNER DETAIL (TYP)
3" = 1'-0"



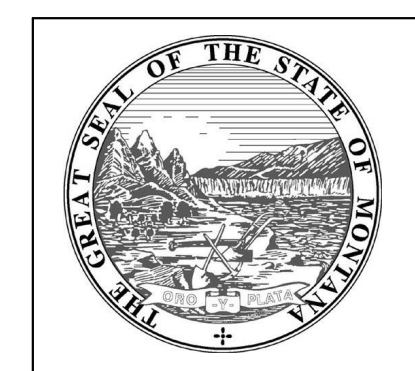
REFERENCE MANUFACTURER REQUIREMENT :
HARDIPLANK PLANK DETAIL 1.02

15 LAP SIDING OUTSIDE CORNER DETAIL (TYP)
3" = 1'-0"



REFERENCE MANUFACTURER REQUIREMENT :
HARDIPLANK PLANK DETAIL 1.10

17 LAP SIDING JAMB DETAIL
3" = 1'-0"



MSU-CPDC
MONTANA STATE UNIVERSITY
BOZEMAN, MONTANA
PHONE: 406.994.5413
FAX: 406.994.5665

BID/PERMIT SET
MSU PAISLEY COURT HOUSING



DRAWN BY: Author		
REVIEWED BY: Checker		
REV.	DESCRIPTION	DATE
2	Addendum #2	01/02/25

PPA #:	21-0143
A/E #:	21-0143
A&E PROJ #:	23123.00

SHEET TITLE
DETAILS

SHEET
A9.2

DATE
03/29/24